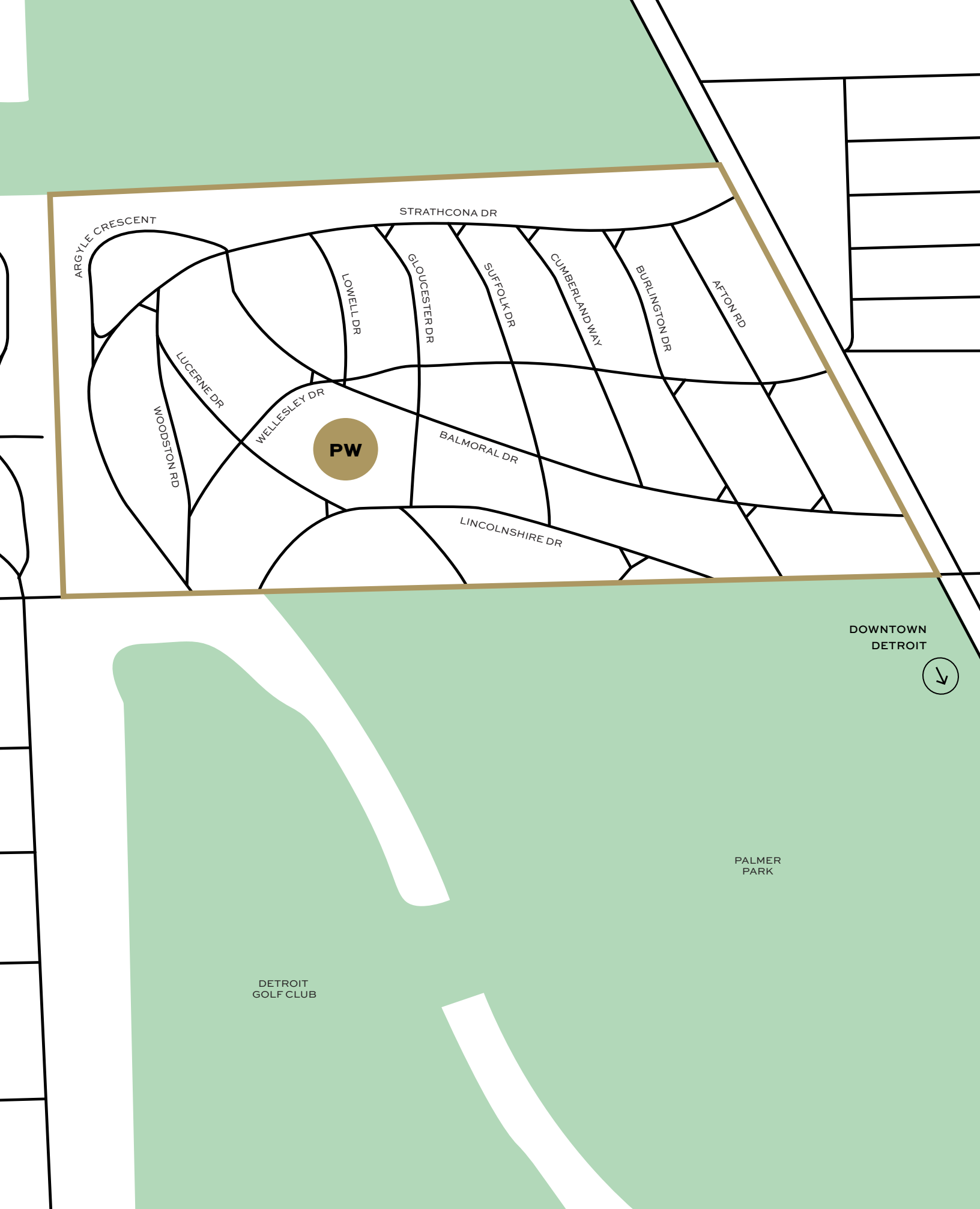


DETROIT NEIGHBORHOODS

PALMER WOODS





the ESSENTIALS



LOCATION

The first official subdivision of Detroit, is within the boundaries of Evergreen Cemetery to the north, Seven Mile Road to the south, and Woodward Avenue and Strathcona Drive to the east and west.

the HISTORY

WHAT'S IN THE NAME

Imagine a quaint, country retreat, with just the essentials. 640 acres of forest, farmland, and apple orchards - a custom designed log cabin - a man made lake filled with a curated assortment of fish and a lighthouse on its shores.

And then out of the blue, proprietor of said retreat, Senator Thomas W. Palmer, and his wife Lizzie, would pause... look at all they had... and decide to bestow 140 acres of their paradise to the city “for the good of everybody”.

20 years following his generosity Thomas Palmer's untimely death would lead to a sale of another 188 acres - thus sparking a chain of events leading to the serendipitous birth of the alluring Palmer Woods and Palmer Park as we know today.

a day in THE LIFE

TENNIS COURTS, SPLASH PARK,
HAND BALL COURTS, AND A
GARDEN SPECIFICALLY CURATED
TO ATTRACT BUTTERFLIES.

Peeking through the wooded vistas of
north Woodward Ave. exists the winding
roads, giant sweeping elms, and opulent
estates of a somewhat secretive English
hamlet come palatial eden.

The 296 acres of Palmer Park to the south
offers 350 year old woods with lake,
lighthouse, log cabin, and a Spanish Bell
forged in the 18th century.

With their annual Home and Gardens
Tour, Music in Homes, and Opera Club,
the tight knit residents along with the
“People of the Park” are committed to the
preservation and harmony of community
and nature alike.



historic ARCHITECTURE

Custodian to Thomas' and Lizzie's vision would be Michigan native Ossian Simonds - landscape architect of Chicago's Lincoln Park.

Simonds would turn the land into a meandering English village, with winding streets and organic property shapes. Together with names like Balmoral and Gloucester, even the streets have a British etymology.

commissioned by
THE WEALTHIEST
of the wealthy

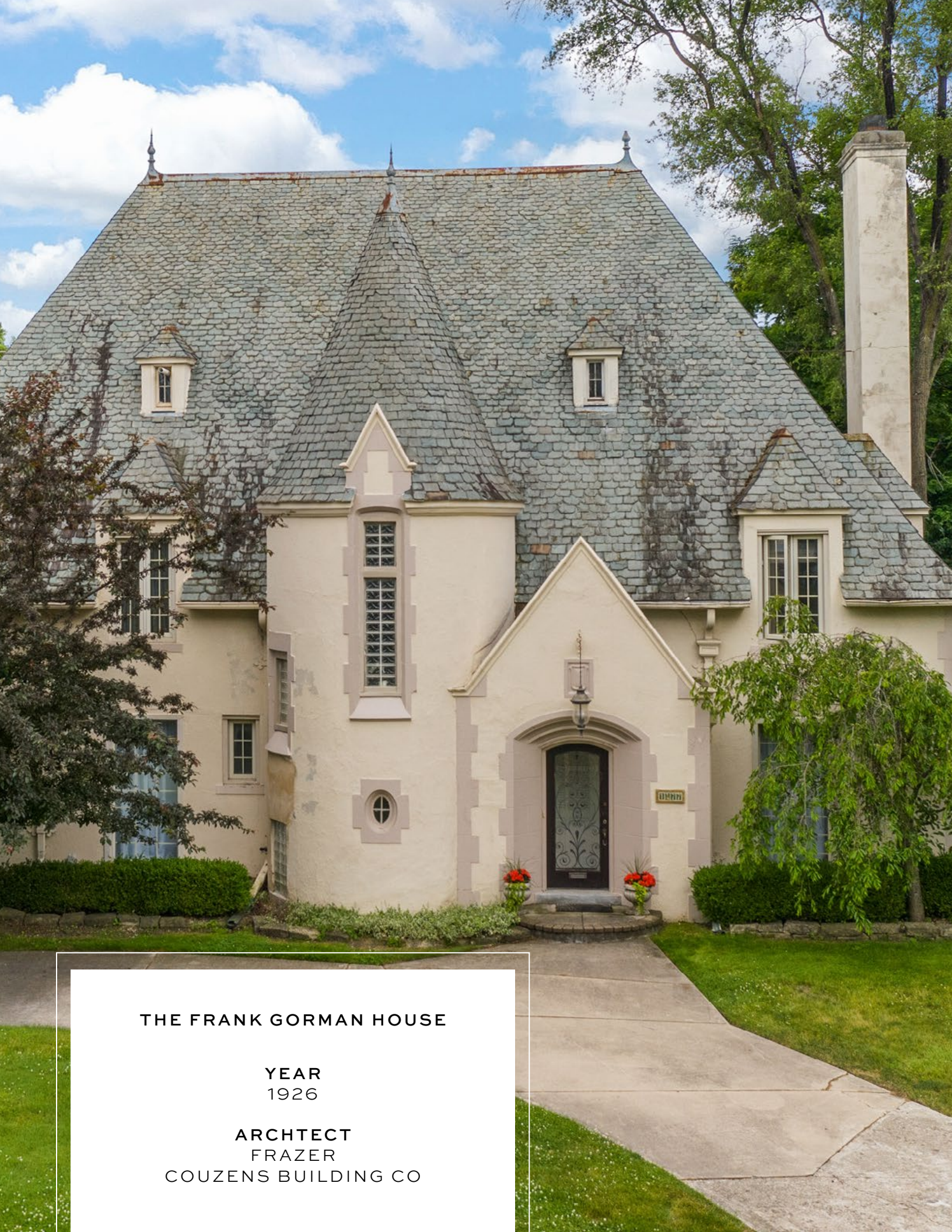


THE I.H. NIE HOUSE

YEAR
1923

ARCHITECT
RICHARD MARR
“ARCHITECT TO MILLIONAIRES”





THE FRANK GORMAN HOUSE

YEAR
1926

ARCHTECT
FRAZER
COUZENS BUILDING CO

PALMER WOODS IS FILLED WITH

*opulent Tudor Revivals,
FRENCH CHATEAUS &
Mediterranean styles.*

*abounding in
STEEPLY PITCHED,
slate roofs, battlements,
TWISTED CHIMNEYS,
and lush gardens.*

PEPPERED THROUGHOUT IS THE
LARGEST ASSORTMENT OF MID-CENTURY
MASTERPIECES ASSEMBLED IN DETROIT

*designed by the likes of
MINORU YAMASAKI
and Frank Lloyd Wright.*

detroit GOLF CLUB

YEAR
1918

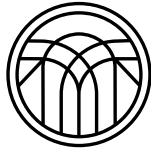
CLUBHOUSE ARCHITECT
ALBERT KAHN

NORTH & SOUTH COURSE
ARCHITECT
DONALD ROSS

The Detroit Golf Club triangulates with the Woods and Park to create one of the most scenic setting in Detroit or anywhere.

note: Admire the architecture from outside the gates as this is a members only club.





NIKA
& CO

REAL ESTATE

NIKA.CO
@NIKA_CO_DETROIT