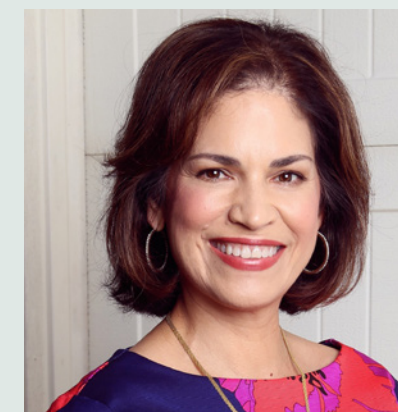




CONTEMPORARY COASTAL

HOUSE TOUR



Designer:
Sally Williams

Firm:
Colorful Concepts Interior Design

Project Location:
Wilmington, North Carolina

Instagram:
[@colorfulconceptsinteriordesign](#)

Website:
[colorfulconceptsinteriordesign.com](#)

When the views and the landscaping are this exquisite...how does one decorate the inside? The owners of this home in **Wilmington, NC**, once again turned to Sally Williams of Colorful Concepts Interior Design, to bring their vision to life. Having previously worked with Williams in **Raleigh, NC**, they knew her impeccable design eye and attention to detail was paramount to the completion of this new construction home. Enlisting Williams early on in the project allowed her to help develop the lighting plan, advise on flooring transitions, and choose everything from trim selections to the stairway banister.

The result is a luxurious yet inviting home that feels both serene and inspiring. Muted hues, repeating patterns, and custom furnishings throughout are carefully selected, never competing with the views just beyond the floor-to-ceiling windows. "Everything was about embracing the views," shares Williams, "low-level furnishings were executed in light and neutral finishes."

When it comes to colors and patterns, Williams was cautious to use them sparingly, saving them mostly for the custom area rugs. "It adds interest without interrupting your sight line," explains Williams. In the dining room, a circular rug and table were chosen partly due to the unique angles of the rooms and flooring. The angles are beautiful architecturally, but need to be designed around in a clever way—had she chosen square or rectangular objects, they could have felt misaligned to the walls, windows, or flooring. The swirling base of the resin and wood table feels unexpected and bold. Hovering above, a faceted glass fixture by Hamerton draws the eye upwards to the blue tray ceilings. A complimentary fixture by Hamerton soars in the adjacent stairwell.

TEXT BY JASMINE BIBLE + PHOTOGRAPHY BY DUSTIN PECK PHOTOGRAPHY





“Everything about the design was centered on embracing the views.”

In the living room, the same blue color was used on the ceiling, and feels as though it's almost a reflection of the water outside. The gas fireplace is faced in a sleek porcelain material, grounding the room without commanding too much attention. Connecting the living room to the kitchen are the bronze bar stools. “The golden bronze tone adds warmth to the room,” says Williams. They are at once modern, dramatic, and just the right amount of glam. The built-in refrigerator, induction cook top, and nearly invisible hood vent feel sleek, modern, and utilitarian, while the water-hued glass backsplash and warm wood cabinets keep it from veering into starkness.

For the primary bedroom, the owners requested a restful retreat. Using soft, muted tones and luxe fabrics, Williams achieved just that. Draperies and motorized shades by the Shade Store allow the owners to drift to sleep to the subtle glittering of the reflecting water, and rise with the sun when they choose, or peacefully sleep in. Assuring that the light from a television was never a distraction, Williams created an entry lounge area complete with a comfortable sofa and built-in cabinetry to display assorted decorative objects in varying blue tones. Behind the bed, the palm print wallpaper by Phillip Jeffries, “brings some visual texture, along with a bit of fun and color,” offers Williams.

The home feels light, airy, and inviting. Follow Williams' lead by pairing sleek, modern lines with warm colors and materials. Establish a focal point in each room, whether that's the view, a fireplace, windows, or one incredible piece of furniture. Then choose pieces that will compliment and elevate that focal point, instead of competing. **N**