



INTERIOR STYLING PLAN.

---

## OVERALL STYLING.



---

A true escape from the daily humdrum of life, Replenish will live up to its name. Creative lighting, and eye catching installations will speak volumes in this super minimalist space.

# CEILING



Lasercut white drop tiles, with custom lighting install so we can quickly change the mood and color of the room.

Exact pattern TBD but I love a leaf pattern or waves, something to calm the mind.

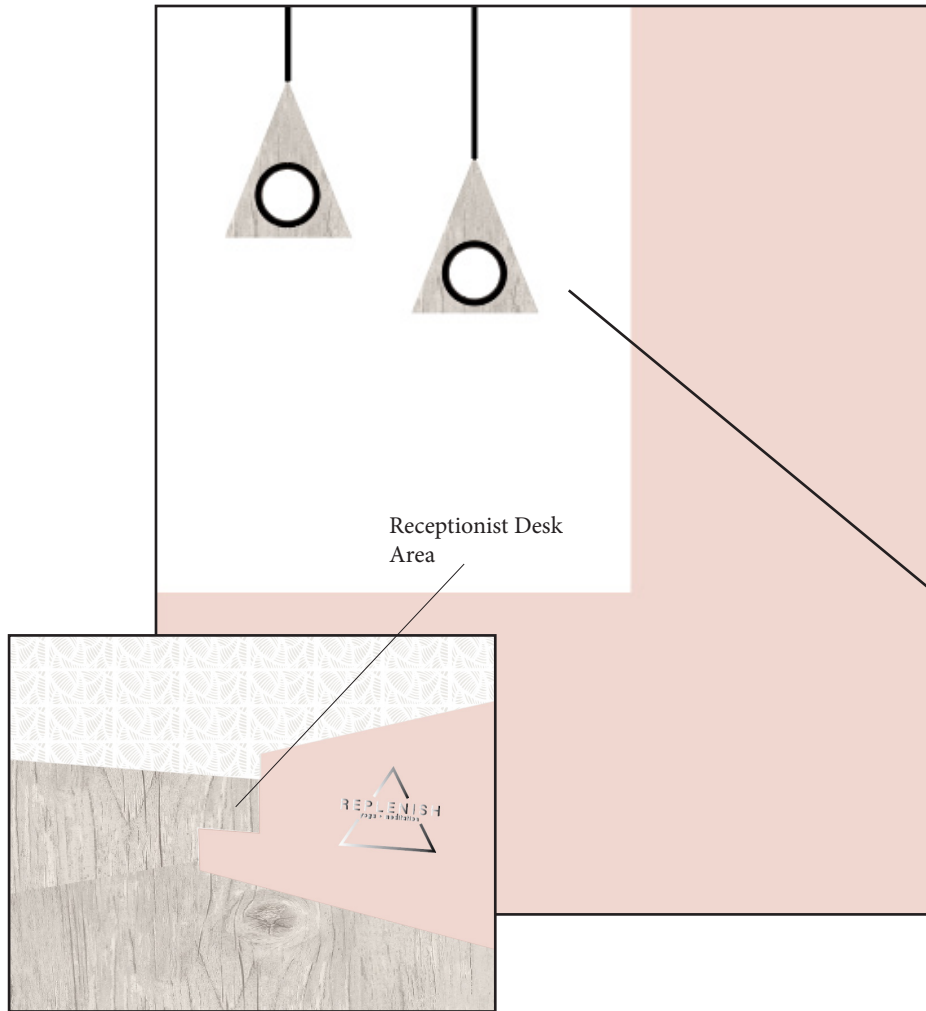


To keep the space welcoming and feeling larger, we need a light color here and I want to bring in the nude

Whitewashed natural wood floor tiles (pergo for best price) to continue on the back wall.

Open Airy. Enlightening. I want the guests who come to a class at REPLENISH to feel like their palettes are cleansed. Soothing colors, patterns, and textures, with a minimalist design aesthetic that can easily be adapted for private events should the owners choose to host them.

# LIT



Simple silver track lighting where necessary.



Mood lighting installed behind ceiling panels

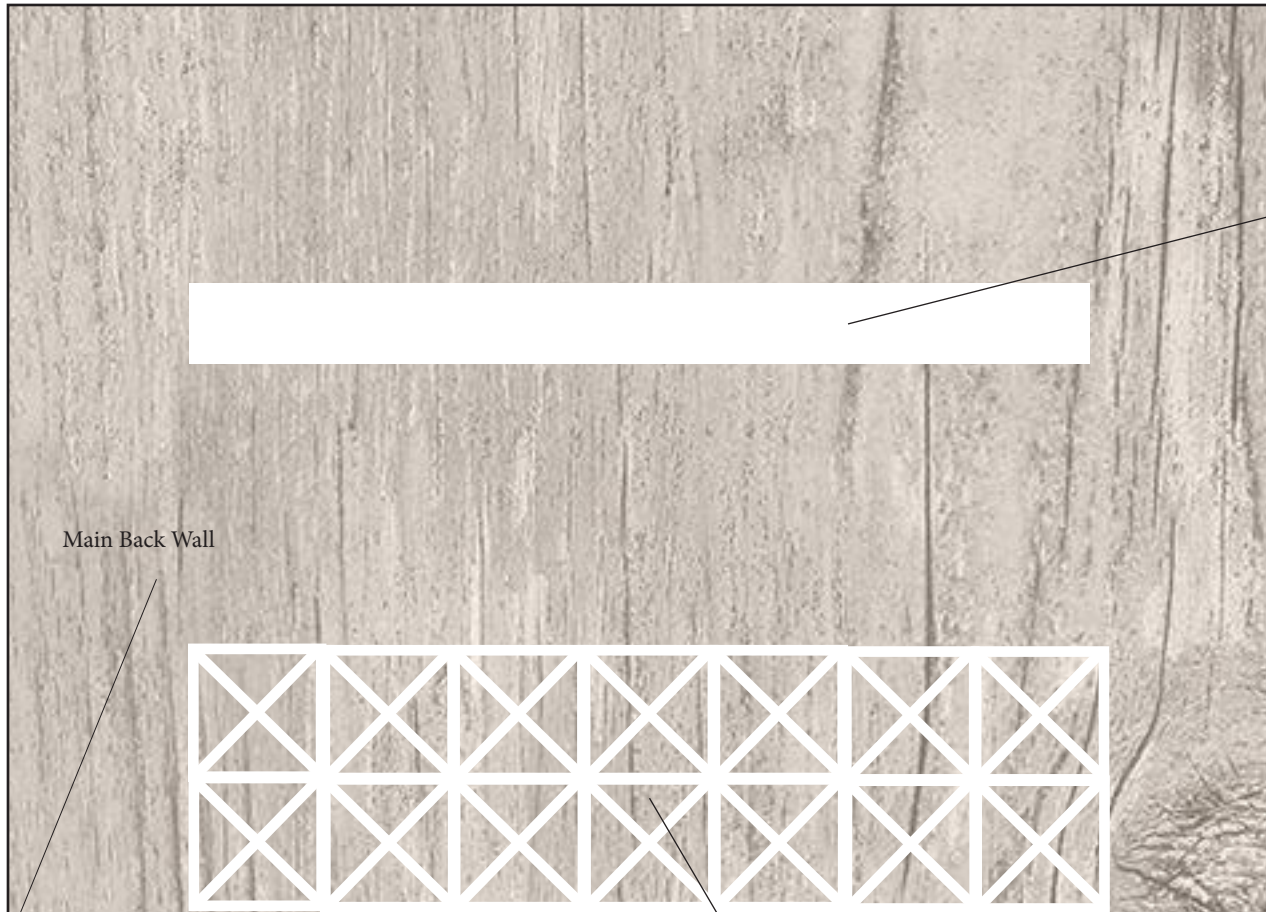


Custom Lighting pendants, cut out of the same wood as the floor. Going for a monochromatic look until you go deeper into the space.





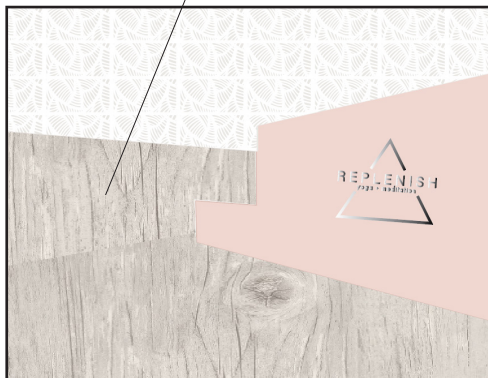
# YOGI BACKDROP



Main Back Wall



Plant Install in a long box, easy to replace plants. Want to break up this wall. Track lighting up top.



Custom bins for the guest personal belongings or yoga mat and pillow storage



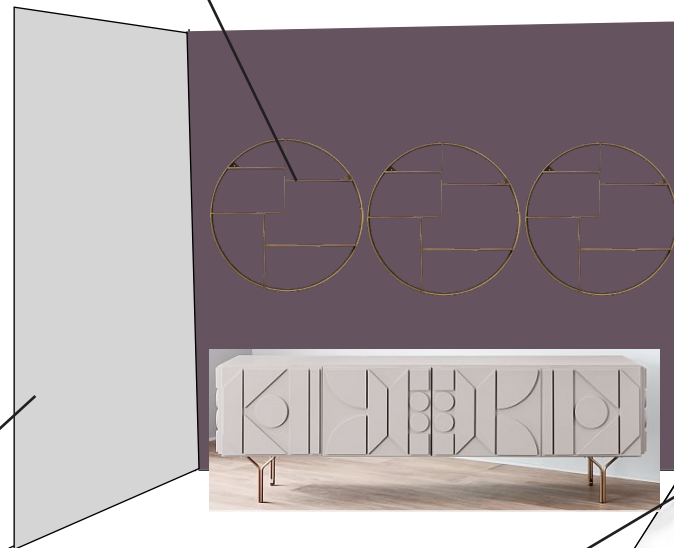
# THE BACK

This space is supposed to feel “deeper” than the front area; bringing in the colors, and some more dimension to the design. A break from the monochromatic, this space will be bolder.

Some ethereal art on the wall over the couch



Want to bring in the green or purple here, with round shelving for merchandising, and a long console for merchandising. LOVE this one from West Elm



Current ledge shortened, curved around, and covered on top with faux marble to allow for a register. Small fridges behind for water.

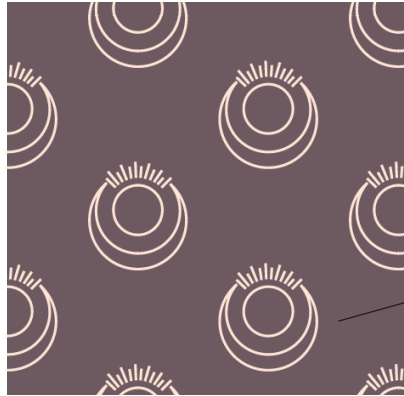
Small seating area with a blush lounge, coffee table TBD, maybe another chair



Faux concrete wall to add a pop of fun to this area. maybe JUST the word REPLENISH on the wall.

## MISC.

---



We should have custom printed meditation poufs and yoga mats with breand patterns for patrons to use.

