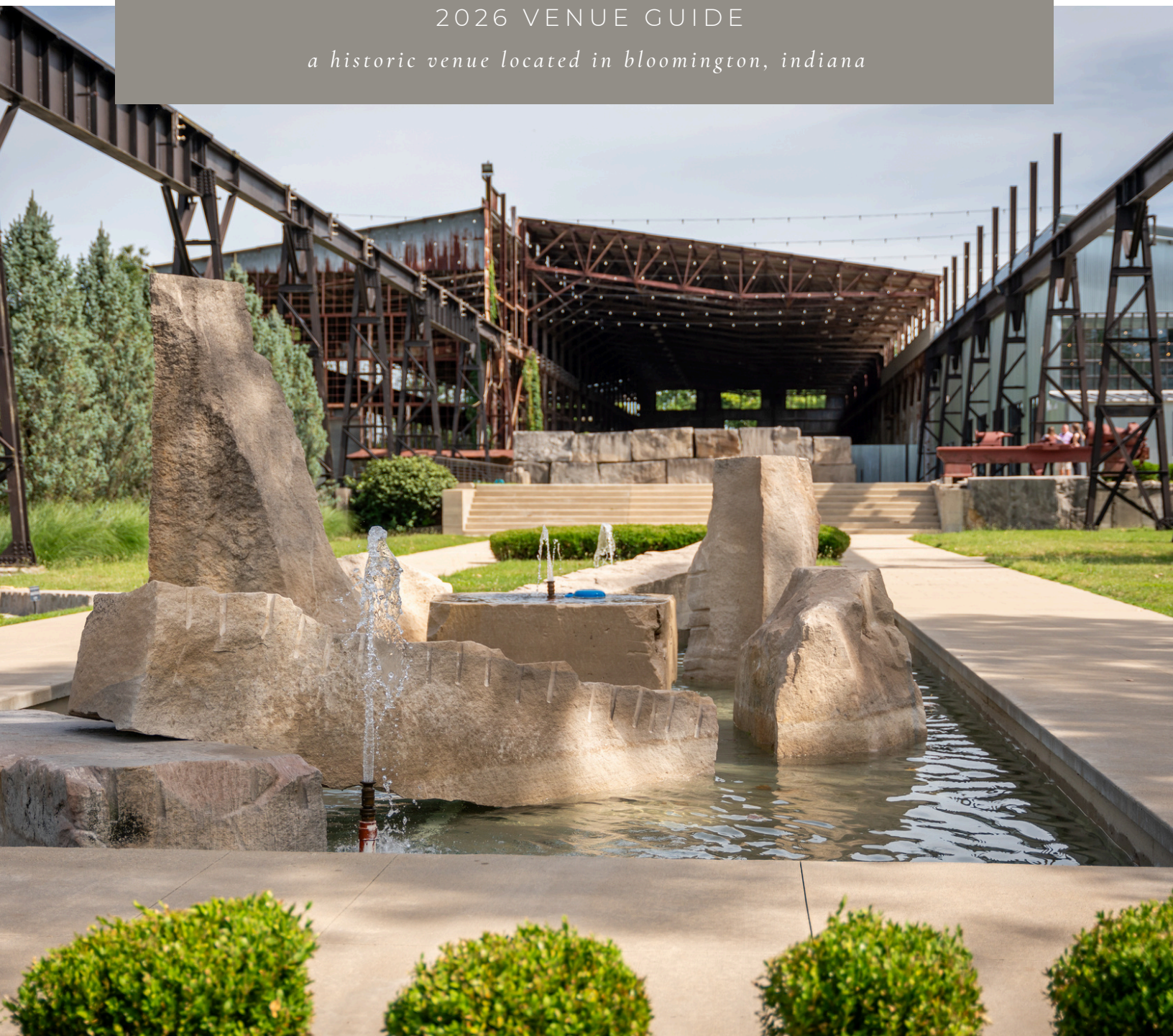


Woolery MILL

2026 VENUE GUIDE

a historic venue located in bloomington, indiana



ONE WORLD AT WOOLERY MILL

2250 West Sunstone Drive
Bloomington, Indiana 47403

INTRODUCTION

one world at woolery mill

Thank you for choosing One World at Woolery Mill for your event! Along with our belief in delicious food and professional service, we continue the One World Enterprises tradition of valuing community partnerships and sustainable business practices. We strive to source our ingredients locally, and to support Bloomington not-for-profits whenever possible. We preserve our surroundings by composting food scraps, recycling, and use environmentally-friendly disposable products. We work to not only serve you and your guests, but to also serve the greater good.

EMAIL

CATERING@BLOOMINGTON.COM

PHONE

(812) 334-3663

WEBSITE

WWW.ONEWORLDATWOOLERYMILL.COM

SOCIAL

@ONEWORLDATWOOLERY

One World at

Woolery
MILL

BOOKING

Spaces are booked on a first come, first served basis. If you would like to book Woolery Mill for your event, a signed contract will always be required. Some events require a 25% deposit, card on file and/or a security deposit.

CANCELLATIONS

When reserving Woolery Mill for your event, we are setting aside time on our event calendar specifically for you and your guests. All bookings have a \$1000 non refundable retainer. Additional funds may be kept or charged depending on date of cancellation.

DEADLINES

All final information is due no later than 2 weeks before the event. Please refer to the "Event Detail Deadline" listed on your catering proposal. Final information includes guest counts and food quantities, floor plans, linen needs, timeline details, rental needs, etc. Changes requested after this date can not always be accommodated. If your RSVP deadline extends beyond the 2 week deadline, we suggest buffering your food quantities by at least 15%.

CATERING SELECTION + MINIMUMS

Each menu is designed to offer items that cover common allergens and dietary preferences. These include vegetarian, vegan, gluten free, dairy free, and nut free options. Please inquire if additional accommodations are needed for guests with allergies.

CATERING MINIMUMS

SPACE A | \$1500

SPACE B | \$500

SPACE C | \$1000

FULL SPACE | \$3000

INCLUSIONS

SET UP + TEAR DOWN OF TABLES, CHAIRS + LINENS

CHINA, FLATWARE + GLASSWARE

HOUSE SOUND SYSTEM

ACCESS TO (1) IPAD. DJ'S, BANDS AND COMPARABLE ENTERTAINMENT VENDORS MUST PROVIDE ALL SOUND EQUIPMENT AND DO NOT HAVE ACCESS TO HOUSE SOUND SYSTEM.

ADDITIONAL RENTALS, AUDIO VISUAL EQUIPMENT + SERVICES AVAILABLE

One World at

Woolery
MILL

VENUE PRICING

2026 overview

All Woolery Mill rentals begin with a 4 hour rental. An extra hour for set up and/or strike can be included if needed. Additional hours can be added based on event needs per the rates below.

Saturdays are only rented as 14 hour full space rentals unless we are within 3 months of the preferred date.

SPACE A | \$1400.00

ADDITIONAL HOURS | \$250.00 PER HOUR

12 HOUR RENTAL | \$3150.00 (SUN - FRI)

SPACE A+B | \$1600.00

ADDITIONAL HOURS | \$350.00 PER HOUR

12 HOUR RENTAL | \$4050.00 (SUN - FRI)

SPACE C | \$1300.00

ADDITIONAL HOURS | \$150.00 PER HOUR

12 HOUR RENTAL | \$2350.00 (SUN - FRI)

SPACE C+B | \$1400.00

ADDITIONAL HOURS | \$250.00 PER HOUR

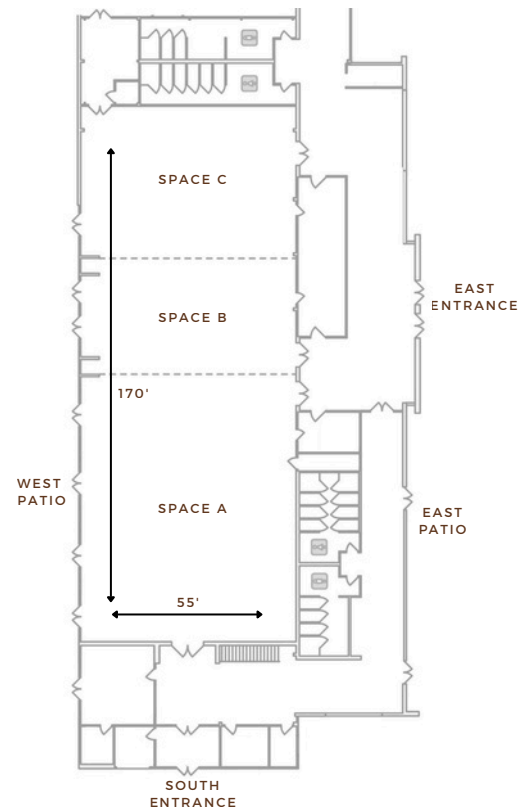
12 HOUR RENTAL | \$3150.00 (SUN - FRI)

FULL SPACE | \$2900.00

ADDITIONAL HOURS | \$500.00 PER HOUR

12 HOUR RENTAL | \$6000.00 (SUNDAY - FRIDAY)

14 HOUR RENTAL | \$8000.00 (SATURDAY + HOLIDAYS)



One World at

Woolery
MILL

SPACE A

woolery mill rental pricing | 2026

4 HOUR RENTAL | \$1400
ADDITIONAL HOURS | \$250 PER HOUR

SUNDAY - FRIDAY ALL DAY* (UP TO 12 HOURS) | \$3150

SPACE INCLUDES:

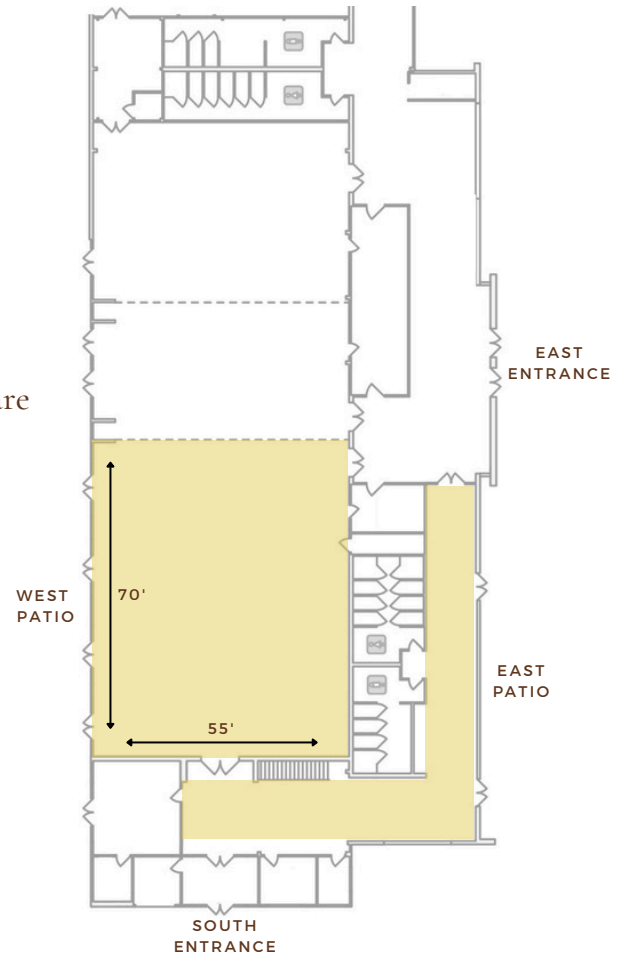
- Pre-Function Space, Mezzanine + West Patio
- House Sound System
- Tables, Chairs and House Linens
- Compostable Greenware or China, Flatware + Glassware
- +1 Set Up Hour and +1 Clean Up Hour

ADD ONS + EXTRAS:

- Microphone, Projector, Screen + Pipe and Drape
- Stage, Additional Specialty Rentals and Linens

CAPACITIES:

250 | MAXIMUM CAPACITY
250 | THEATER STYLE
250 | STANDING COCKTAIL RECEPTION
200 | SEATED RECEPTION
**150 | SEATED RECEPTION WITH DANCE FLOOR
OR PRESENTATION**



All day or hourly Saturday rentals of Space A can only be booked within 3 months of the event date.



SPACE A+B

woolery mill rental pricing | 2026

4 HOUR RENTAL | \$1600
ADDITIONAL HOURS | \$350 PER HOUR

SUNDAY - FRIDAY ALL DAY* (UP TO 12 HOURS) | \$4050

SPACE INCLUDES:

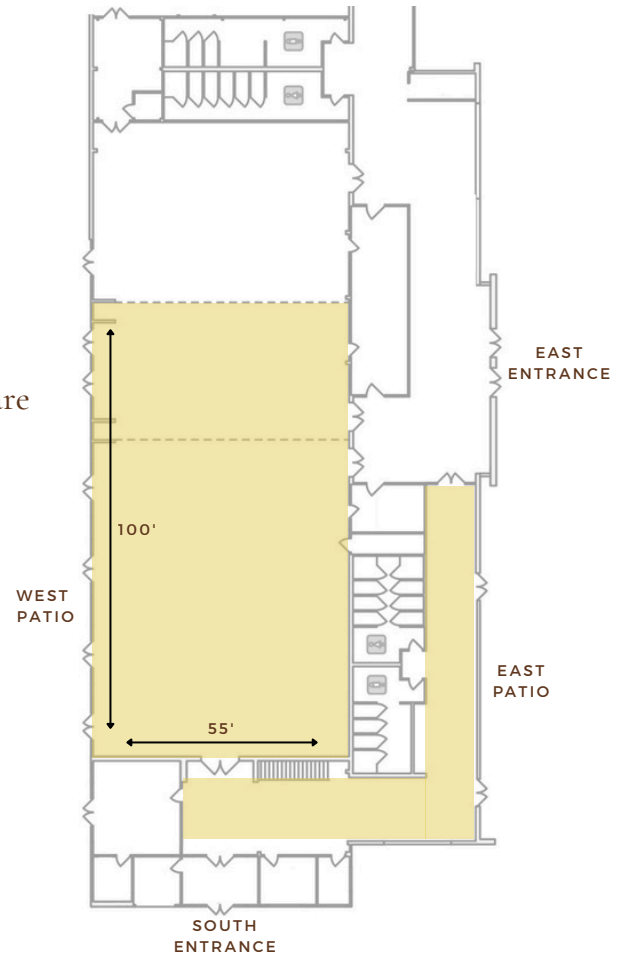
- Pre-Function Space, Mezzanine + West Patio
- House Sound System
- Tables, Chairs and House Linens
- Compostable Greenware or China, Flatware + Glassware
- +1 Set Up Hour and +1 Clean Up Hour

ADD ONS + EXTRAS:

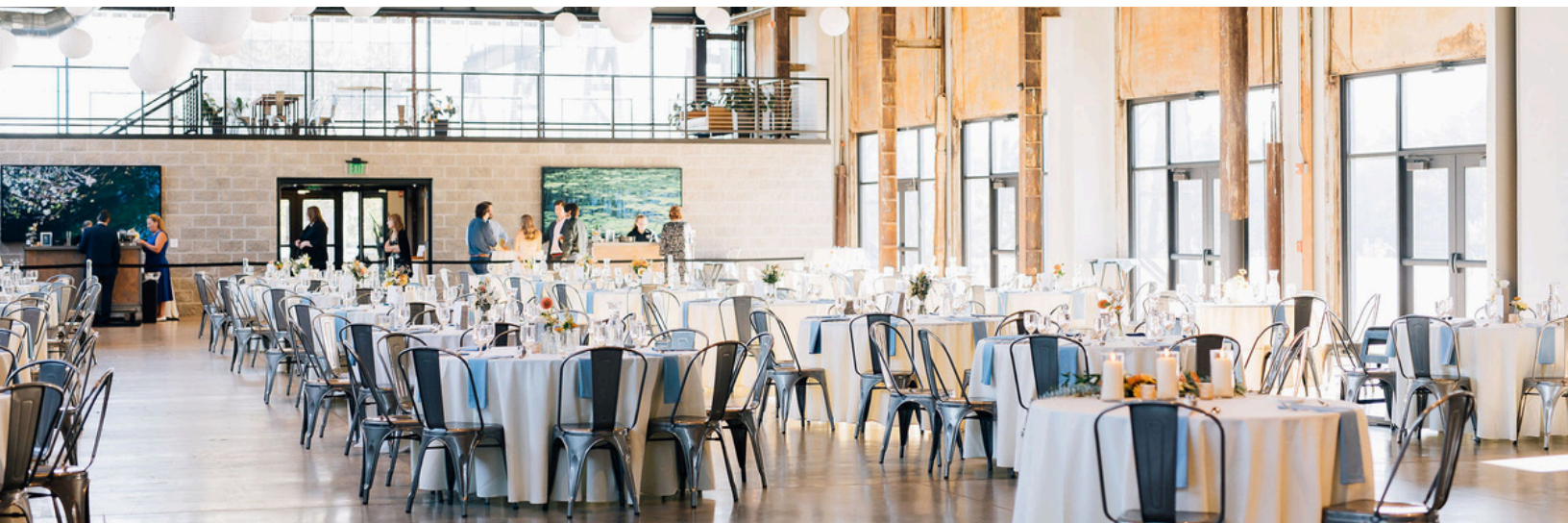
- Microphone, Projector, Screen + Pipe and Drape
- Stage, Additional Specialty Rentals and Linens

CAPACITIES:

300 | MAXIMUM CAPACITY
300 | THEATER STYLE
300 | STANDING COCKTAIL RECEPTION
250 | SEATED RECEPTION
200 | SEATED RECEPTION WITH DANCE FLOOR
OR PRESENTATION



All day or hourly Saturday rentals of Space A+B can only be booked within 3 months of the event date.



SPACE C

woolery mill rental pricing | 2026

4 HOUR RENTAL | \$1300
ADDITIONAL HOURS | \$150 PER HOUR

SUNDAY - FRIDAY ALL DAY* (UP TO 12 HOURS) | \$2350

SPACE INCLUDES:

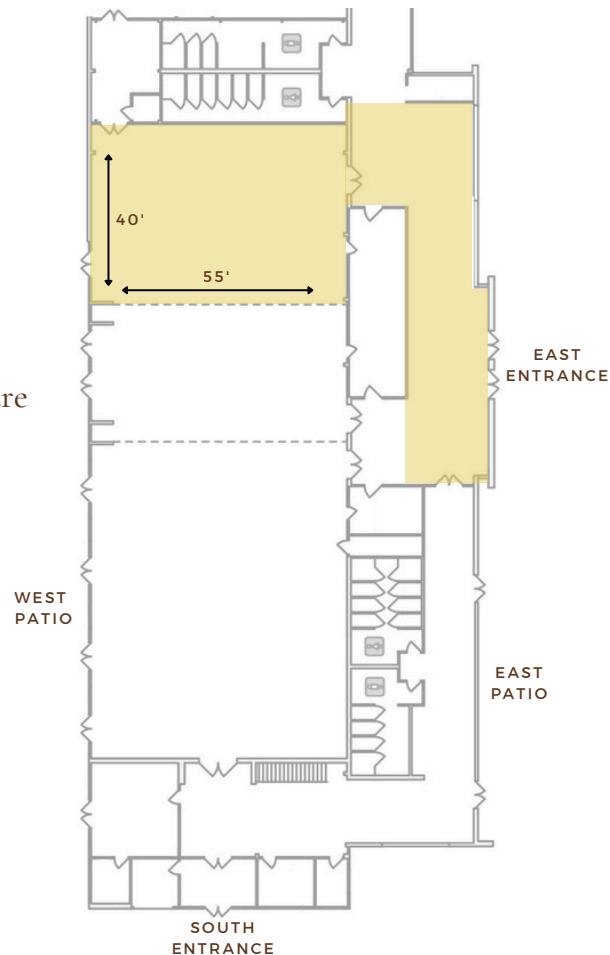
- Pre-Function Space + East Patio
- House Sound System
- Tables, Chairs and House Linens
- Compostable Greenware or China, Flatware + Glassware
- +1 Set Up Hour and +1 Clean Up Hour

ADD ONS + EXTRAS:

- Microphone, Projector, Screen + Pipe and Drape
- Stage, Additional Specialty Rentals and Linens

CAPACITIES:

150 | MAXIMUM CAPACITY
150 | THEATER STYLE
150 | STANDING COCKTAIL RECEPTION
100 | SEATED RECEPTION
**70 | SEATED RECEPTION WITH DANCE FLOOR
OR PRESENTATION**



All day or hourly Saturday rentals of Space C can only be booked within 3 months of the event date.



SPACE C+B

woolery mill rental pricing | 2026

4 HOUR RENTAL | \$1400
ADDITIONAL HOURS | \$250 PER HOUR

SUNDAY - FRIDAY ALL DAY* (UP TO 12 HOURS) | \$3150

SPACE INCLUDES:

- Pre-Function Space + East Patio
- House Sound System
- Tables, Chairs and House Linens
- Compostable Greenware or China, Flatware + Glassware
- +1 Set Up Hour and +1 Clean Up Hour

ADD ONS + EXTRAS:

- Microphone, Projector, Screen + Pipe and Drape
- Stage, Additional Specialty Rentals and Linens

CAPACITIES:

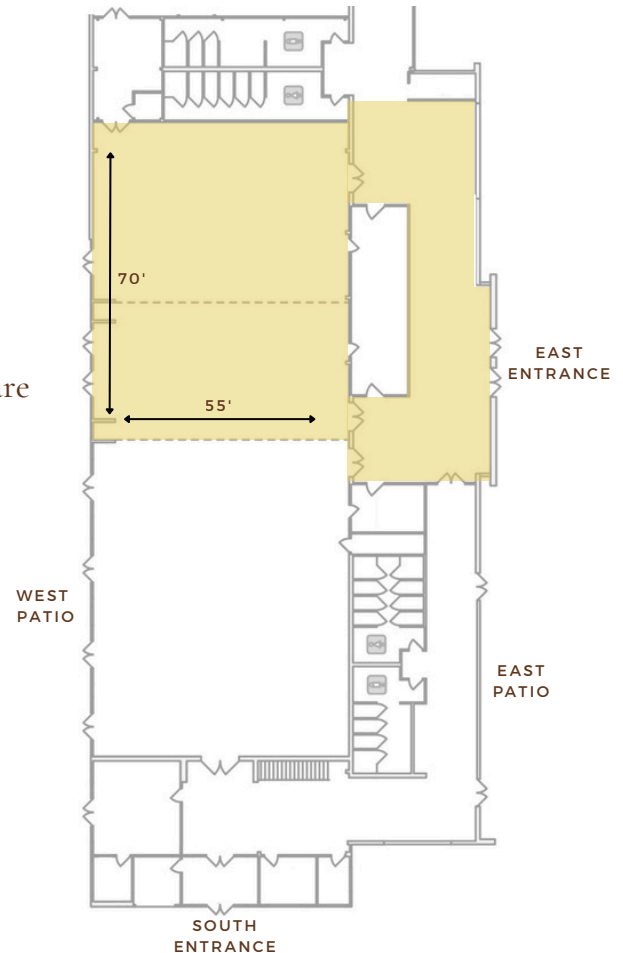
250 | MAXIMUM CAPACITY

250 | THEATER STYLE

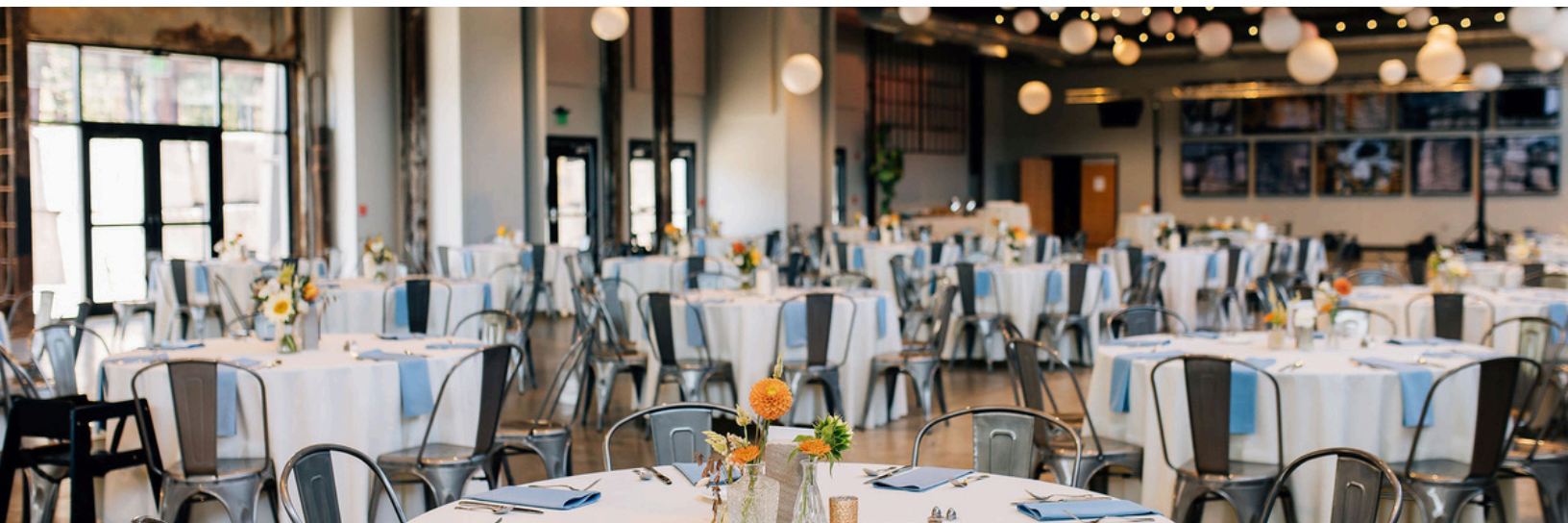
250 | STANDING COCKTAIL RECEPTION

200 | SEATED RECEPTION

150 | SEATED RECEPTION WITH DANCE FLOOR
OR PRESENTATION



All day or hourly Saturday rentals of Space C+B can only be booked within 3 months of the event date.



FULL SPACE

woolery mill rental pricing | 2026

4 HOUR RENTAL | \$2900

ADDITIONAL HOURS | \$500 PER HOUR

SUNDAY - FRIDAY ALL DAY* (UP TO 12 HOURS) | \$6000

SPACE INCLUDES:

- Pre-Function Space, Mezzanine, East Patio + West Patio
- House Sound System
- Tables, Chairs and House Linens
- Compostable Greenware or China, Flatware + Glassware
- +1 Set Up Hour and +1 Clean Up Hour

ADD ONS + EXTRAS:

- Microphone, Projector, Screen + Pipe and Drape
- Stage, Additional Specialty Rentals and Linens

CAPACITIES:

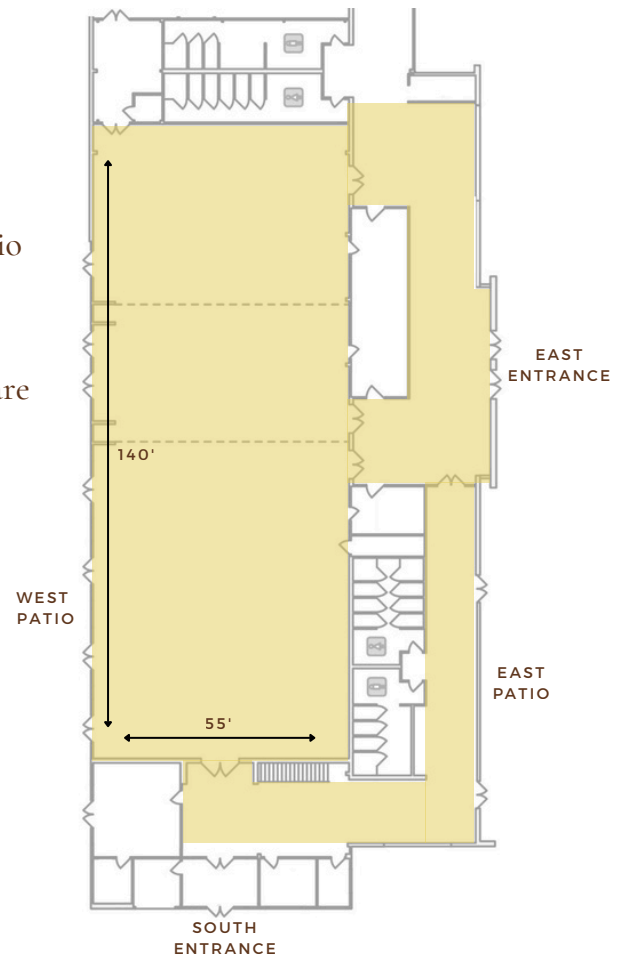
500 | MAXIMUM CAPACITY

500 | THEATER STYLE

500 | STANDING COCKTAIL RECEPTION

500 | SEATED RECEPTION

450 | SEATED RECEPTION WITH DANCE FLOOR
OR PRESENTATION



Hourly Saturday rentals of the Full Space can only be booked within 3 months of the event date.



FAQ

frequently asked questions | hourly + all day rentals

VENUE

DO I HAVE TO SET UP OR TEAR DOWN?

You are responsible for set up and tear down of any personal items or decor you bring into WM (if not handled by other hired vendors). WM takes care of set up, management and tear down of all items provided with the rental, including tables, chairs, linens and catering equipment.

CAN I GET IN EARLY?

All hourly rentals include a bonus hour on the front end of the rental for you to set up. Please make sure the rental time reserved includes plenty of time for both your set up and any set up your vendor team needs. This includes delivery times for outside rentals and pick up times. Outside rental items can not stay overnight unless approved by your Sales Coordinator.

ARE THERE PREFERRED VENDORS?

One World Catering is the in-house caterer for the space and offers both food and beverage options, including bar service. WM can provide you with a list of vendors we work with frequently and recommend. You are also welcome to bring in your own vendors.

DO YOU HAVE ANY DECOR?

WM offers an upgraded table top package for \$5.00 per guest. This package includes table numbers, printed menus, silver or gold chargers, gold flatware and a linen credit with BBJ La Tavola Linen based on your guest count. Additionally, WM has a rental champagne wall. Inquire with your Sales Coordinator for additional options. WM does not offer small goods such as vases, votives, candles, runners, etc.

IS THERE A DAY OF PERSON?

An Event Producer will be onsite to make sure the details you and your Sales Coordinator finalized are executed accordingly in relation to venue and facility needs along with assisting our in-house catering team as needed. If applicable, the Event Producer will act as the point person for your vendor team.

DO YOU REQUIRE 1 DAY EVENT INSURANCE?

Most events do not require a 1 day event insurance policy. If a policy is needed for your event, you will be notified by your Sales Coordinator.

One World at

Woolery
MILL

FAQ

frequently asked questions | hourly + all day rentals

CATERING + BAR

WHEN DO YOU NEED FINAL MENU + NUMBERS?

Final menus along with all applicable quantities will be due 2 weeks prior to the event date. Any changes made within 2 weeks up the event date are not guaranteed.

CAN I BRING IN OUTSIDE FOOD OR BEVERAGE?

All food, soft beverage and alcohol provided to guests must be provided and served by One World Catering. Any outside food must be approved in writing by your Sales Coordinator. Any alcohol donated by a licensed vendor to a not for profit must have prior approval from your Sales Coordinator and must have proper documentation submitted at least 2 weeks prior to the event.

Any outside alcohol brought onto the grounds or into the facility by you or your guests is against state law and will not be tolerated under any circumstances. This will be considered a breach of contract and the product will be confiscated. Additional penalties and/or fees will apply based on the severity of the offense.

DOES OWC OFFER TASTINGS?

OWC offers paid tastings by appointment only or you may purchase tickets to an upcoming group tasting event. Please contact your Sales Coordinator for more details.

WILL THERE BE A TIP JAR ON THE BAR?

If you choose a hosted full bar or consumption based bar for your event, no tip jar will be present at the bar. A 7% automatic gratuity will be applied based on the products ordered with your bar package. If you offer a cash bar, the OWC bartender will be allowed to place a tip jar on the bar.

One World at

Woolery
MILL

One World at

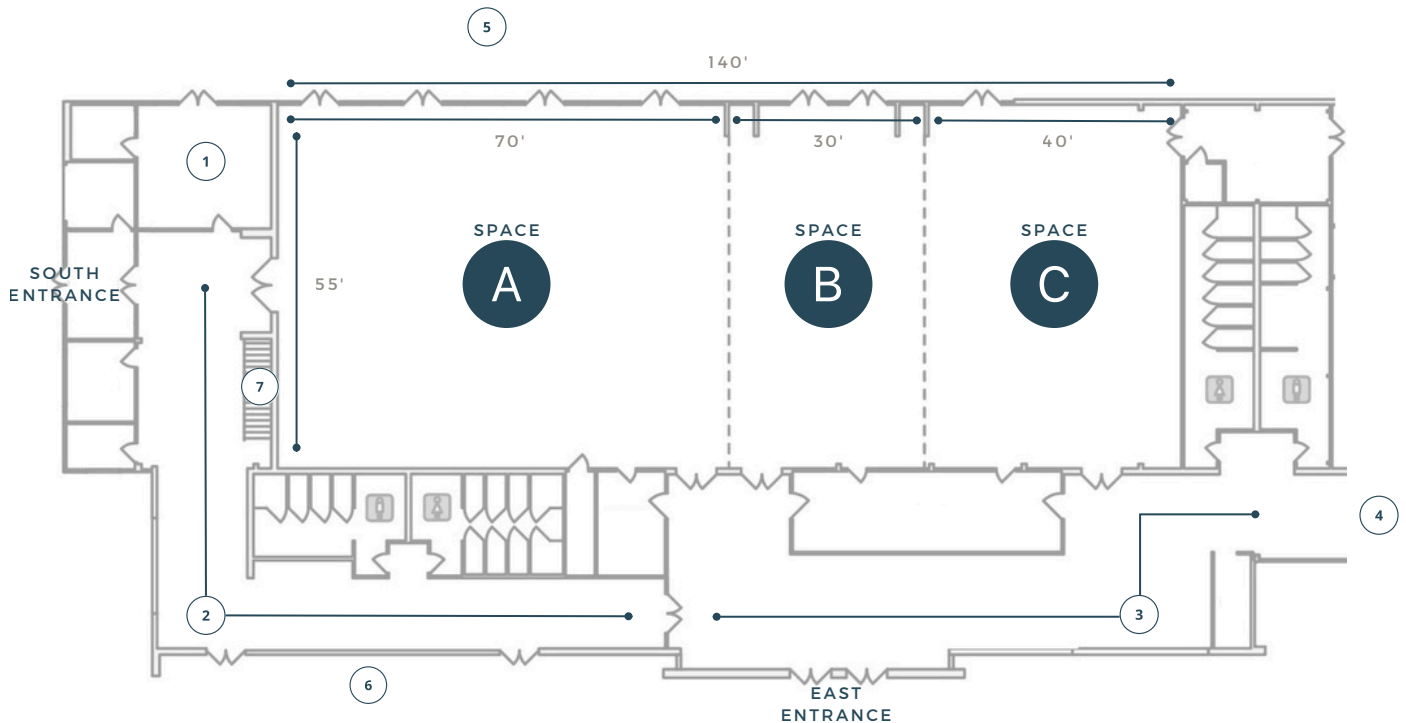
Woolery
MILL

FLOOR PLAN

with capacities

WOOLERY MILL MAP

- ① SOUTH BRIDAL SUITE
- ② SOUTH PRE-FUNCTION SPACE
- ③ NORTH PRE-FUNCTION SPACE
- ④ NORTH BRIDAL SUITE
- ⑤ WEST PATIO
- ⑥ EAST PATIO
- ⑦ MEZZANINE
(UPSTAIRS, MAX CAPACITY = 45)



MAX CAPACITIES

	SPACE A	SPACE A+B	SPACE C	SPACE C+B	FULL SPACE
MAXIMUM CAPACITY	250	300	150	250	500
THEATER STYLE	250	300	150	250	500
STANDING COCKTAIL RECEPTION	250	300	150	250	500
SEATED RECEPTION	200	250	100	200	500
SEATED RECEPTION	150	200	70	150	450
WITH DANCE FLOOR OR PRESENTATION					

One World at

Woolery
MILL

AUDIO VISUAL

updated january 2025

All event rentals at Woolery Mill include complimentary access to the house sound system. Additional needs may be added on a la carte for events less than 12 hours. All audio visual needs must be discussed and approved in advance with your Sales Coordinator.

COMPLIMENTARY

ACCESS TO HOUSE SOUND SYSTEM

(1) IPAD FOR MUSIC SOURCE

(1) CORDLESS MICROPHONE

All complimentary audio needs will be set up and with a basic sound check prior to the client arrival time. If a sound check is required for your event, please contract your Sales Coordinator for availability and scheduling.

ADD ONS + EXTRAS

AUDIO

- Additional Microphones (up to 4 total) \$25/each

VISUAL

- 10ft x 6ft Dual Projection Screen (quantity 2) \$50/each
- 8ft x 6ft Pull Down Projection Screen (quantity 1) \$30
- Projector with Telescoping Stand (quantity 2) \$50/each

MISCELLANEOUS + LABOR

- Pipe and Drape Access (black, white or ivory drapes) \$100
- Modular Stage (6 4ft x 4ft panels available) \$230 - \$490+
- Kingsnake Sound Audio Technician..... \$50/hour

