

BROOKING

—ANGUS RANCH—

Open Book Invitational
CLOSEOUT AT 7PM ON NOV. 23

Welcome TO OUR PROGRAM

It is amazing how time flies by and we are having our 8th edition of this sale. I am proud how it has developed over the years. It sure is rewarding to see how well many of these females have sold through this sale and went on to be productive and making returns for their new owners. You will see many of the females in this offering go back to past graduates of this sale.

Last fall was absolutely one for the memory books for us. Our sale was well received and successful for us and our consignors. A past sale heifer purchased by Dusty Rose Cattle Co. went on with a clean sweep and won both the FarmFair and Agribition Supreme Championships. In the Angus show won every single division we entered in the female show. We won 5 out of 7 divisions including Grand Champion female. All of these females were purchased through this sale.

Over the past 7 sales, females sold through this sale have won 16 heifer calf divisions, 4 yearling divisions, one Reserve Grand Champion and two Grand Champion females at Agribition. I think this shows the depth of quality available every year. It sure helps we are able to select the very best we can find from our customers which increases the amount of quality and options available. This year without a doubt we have the best offering ever from our consignors and have reached out, increasing the number of high-quality bred females as well.

Last year was our second year for our donation heifer and it was humbling and enjoyable for us to see the results. We sold out of tickets and raised \$10,000 to go towards junior show programs. This year we thought we would switch it up a bit and make the donations towards bursaries for juniors to purchase a heifer. One junior will win our donation heifer and five other juniors will win up to \$2000 towards the purchase of a heifer from anywhere in Canada.

If you have any questions or want to discuss the cattle on offer, please feel free to contact me. Or better yet come for a visit. We sure like the visit and I would bet you wouldn't mind getting off the farm either.

Lastly, we would like to thank everyone who helps us throughout the year on the ranch and to our consignors and customers for your support. We greatly appreciate it.

Justin & Tawnie, Kordell, Kiefer and Aleida
Box 813 Radville, SK S0C 2G0
brookingangus@outlook.com

www.brookingangusranch.com



SALE DAY CONTACTS

Justin Morrison, 306-536-4590

Tawnie Morrison, 306-861-4155

Bohrson Marketing
Services Ltd.

Scott Bohrson, 403-370-3010

Rob Voice, 306-270-6082

Taylor Richards, 306-821-4169

Nate Marin, 306-869-7130

Roger Reynolds, 306-536-6112

Kent McCune, 817-602-8629

Cheramie Viator, 979-777-9419

ANGUS LIVE - Jeremy Haag, 816-516-1309

SALE DAY INFORMATION

CONSIGNOR CONTACTS

ANCHORAGE FARMS - Olds, AB
The Bohrsen Family, 403-370-3010

BAR-E-L ANGUS - Stettler, AB
Dave & Lynne Longshore, 403-740-6788

BLAIRSWEST - Drake, SK
Maguire Blair (306) 360-7716

CAMPBELL CATTLE - Derwent, SK
Ryan Campbell, 780-853-1032

CARLSON ANGUS - Regent, ND
Jon Carlson, 701-690-7190

DUSTY ROSE CATTLE CO - Arcola, SK
Randy James (306) 575-7833

GREENWOOD ANGUS - Lloydminster, SK
Jayden or Jaxon Payne, 306-821-2260

HEATHER LEBLANC - Ogema, SK
306-897-0043

KCH CATTLE - Oliver, BC
Ken & Kerri Hinsburg, 250-485-2510

KT RANCHES - Kelowna, BC
Kevin Carson, 250-878-1000

MTC CATTLE - Derwent, AB
Mitch & Jodie Campbell, 780-787-0492

RIVERFRONT ANGUS - Medicine Hat, AB
Ashton Robertson, 403-878-0101

SCHWAN ANGUS - Swift Current, SK
Jeff & Brenda Schwan, 306-741-2166

WESTWAY FARMS LTD. - Didsbury, AB
Hadway Family & Brayden Schmidt, 306-540-3565

WILBAR FARMS. - Dundurn, SK
Bryan & Tracey Willms, 306-492-7504

WIWA CREEK ANGUS - Rush Lake, SK
Jonathan Thomason, 306-774-4006

SALE LOCATION

At the ranch Radville, SK. From Radville go 8km west until Rg Rd 185. Then go North 4.4 km. We are on east side. From Ceylon go 14.6 km east until Rg Rd 185 then go North 4.4 km. We are on east side. We are an hour south of Regina International Airport.

SHOW RIGHTS

Brooking Angus Ranch reserves the rights to show any of the heifers at Canadian Western Agribition. Contact Justin on which ones we are thinking of showing.

CUSTOMER PARTNERSHIP PROGRAM

Progeny from females purchased through Brooking sales are eligible to sell in future Brooking Angus Ranch production sales. Contact Justin for details.

JUNIORS

All calendar year heifers in the sale are halter broke. However, they are suitable for different age and experience. Contact Justin on which ones would be suitable especially for the first time showman.

DELIVERY

Brooking will assist in coordination of delivery and get heifers to central points within a 300km radius of Radville. All heifers can be delivered to Agribition. US purchases: Brooking will provide necessary health papers and deliver to a central point in North Dakota. All Juniors and their families that purchase are welcome to come to the ranch and we can assist you in a workshop that covers all aspects of the showing-feeding, daily hair care, showmanship, grooming and clipping.

CATALOGUE DESIGN

Created by Bohrsen Marketing Services Ltd.

VIDEOS

Available on AngusLive.com closer to sale time.

HOW TO BID

First step is to **REGISTER** as a bidder at www.Anguslive.com or call 816-516-1309.



If you do not want to bid on the Internet you can bid by telephone with Justin Morrison 306-536-4590 or in person at Brooking Angus Ranch.

***HORSE RACE STYLE CLOSING FORMAT FOR THIS SALE! WHEN TIME EXPIRES, ALL LOTS ARE DECLARED SOLD! ORIGINAL ENDING TIME: 7PM CST WITH EXTENDED BIDDING TO FOLLOW! EXTENDED BIDDING WILL CONTINUE UNTIL THERE IS NO BIDDING FOR 5 MINUTES!**

With this option, all lots will close simultaneously. A few benefits to this style of auction are the buyer has the CHOICE to switch to any lot(s) in the offering if he is outbid on his/her current choice; buyer does not have to deal with the sale order of the sale because all lots are offered and bid on simultaneously; and the buyer has a choice(s) and more time to make his/her decision. Extended Bidding means that the auction is not declared closed until there have been ten minutes of inactivity on the current sale. If there is any bidding during the inactivity period, the auction is extended until there is no bidding for ten minutes during the inactivity period. You can always check the time remaining that appears next to each lot item. **REMEMBER TO CLICK ON THE REFRESH BUTTON TO UPDATE THE TIME REMAINING!** For this sale the extended bidding period is 5 minutes.

Example 1: Auction Closes at 7pm. There is no bidding from 6:55 pm to 7pm. All lots are declared closed and the sale ends at 7pm.

Example 2: Auction closes at 7pm. There is a bid placed at 6:58pm. The Auction is extended 5 additional minutes. No more bidding occurs. All lots are declared closed and the sale ends at 7:03pm.

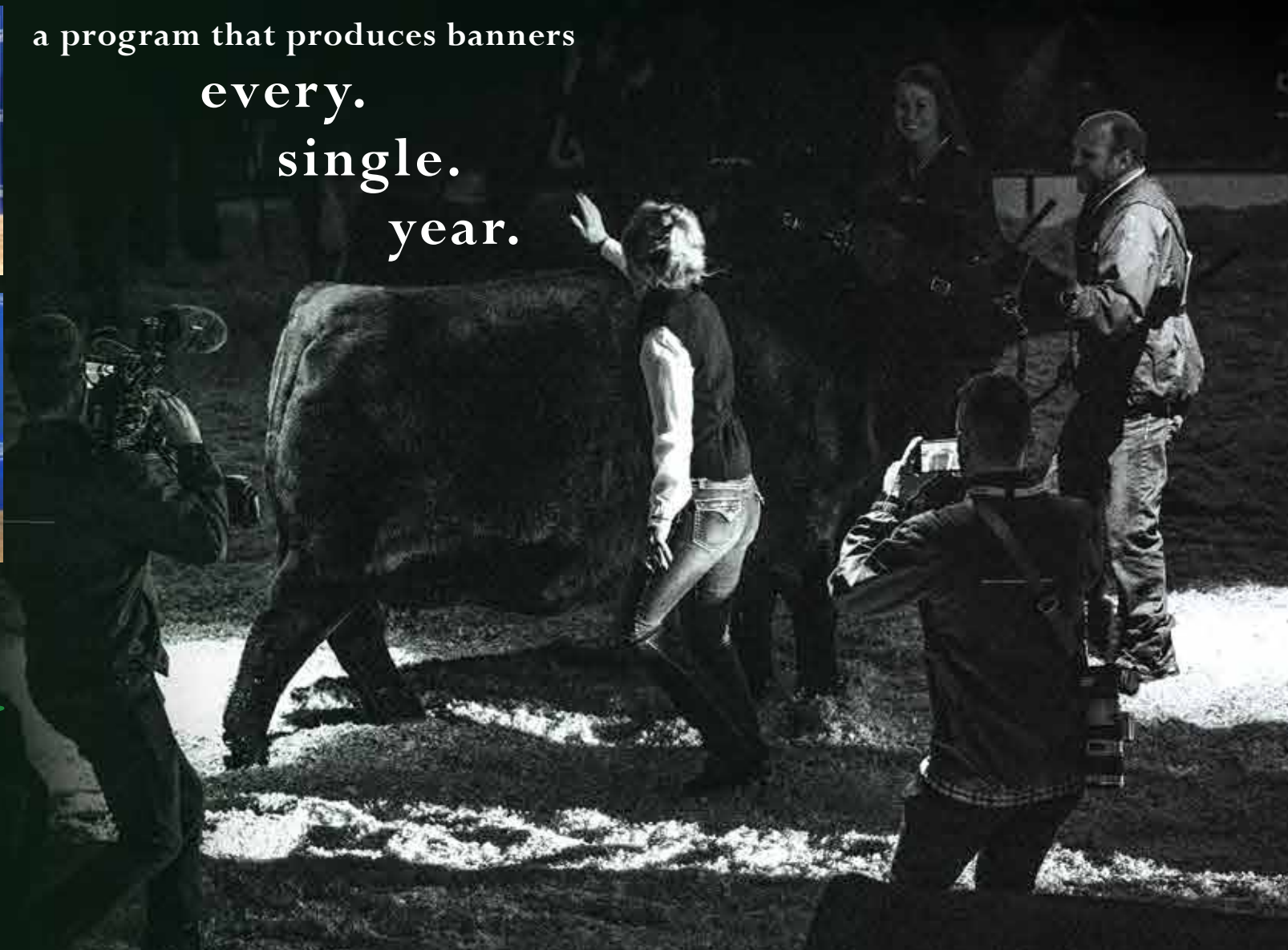
Example 3: Auction Closes at 7pm. There is a bid placed at 6:58pm. Auction is extended by 5 minutes until 7:03 pm. Another bid is placed at 7:02 pm. No more bids are placed. All lots are declared closed and the sale ends at 7:07 pm *In the event of an extended auction there will be no bids accepted after 11:59 ET.

Proxy Bidding is a feature you may use during the duration of the auction. This feature allows you to place a private maximum bid that only you will be aware of and allow the computer to bid on your behalf when another bidder places a bid on the same animal(s) as you.

Sale runs Sunday Nov. 22 - Monday Nov. 23 at 7PM CST



a program that produces banners
every.
single.
year.



*All of these ladies
have sold in past
Brooking sales.*



Donation Heifer

Brooking Fire Rose 0112

2177146 :: JSTN 112G :: January 28 2020

HF SYNDICATE 213Z
S:W SUNRISE SYNDICATE 60F
HF ECHO 220D

HF ECHO 220D
D: BROOKING FIRE ROSE 8032
BROOKING FIRE ROSE 6048

bw	ww	yw	milk	tm	sc	ce	mce
1.3	46	79	20	-	-	7.0	8.0

We are very excited to announce we will be doing another donation heifer. We thought we would change things up a bit and give this year a new twist! We are going to give away one of our top end heifers to a junior between the ages of 8-18. To win the heifer, an entry needs to be purchased in the name of a junior that is an active member of 4-H or a junior association and is a Canadian citizen. **We will draw a name and that lucky junior owns the heifer! 5 more names will also be drawn and they will receive up to \$2000 bursary to purchase a heifer** (heifer calf or bred heifer) from any breeder, (purebred or commercial) in Canada. Proof of purchase is required. The funds will be transferred directly to the seller of the heifer. Purchase must be made by December 1, 2021. **A maximum of 100 entries for \$100 each** will be on offer and all the money raised will be donated directly back to our juniors' future herds! You may purchase more than one entry per junior but can only win once. **ENTRIES MUST BE PURCHASED BY NOV. 22/20. WINNERS WILL BE ANNOUNCED ON FACEBOOK LIVE THE MORNING OF THE SALE, MONDAY, NOV. 23/20.**

The heifer will be of the same quality you can expect of all our sale heifers. She will be managed among our show/sale heifers and will be halter broke and show ready.

To purchase an entry, you can either email us at brookingangus@outlook.com, text/call at 306-861-4155 or PM on Facebook.

Thank you for all the support
\$20,000 has been given back to these junior organizations
by funds raised from the last 2 years of donation heifers

2019 WINNING RECIPIENTS

Rocco Perrot	Alameda SK	Winner of BROOKING LASS 9038
<i>WINNING CASH RECIPIENTS</i>		<i>JUNIOR ORGANIZATION OF CHOICE</i>
Keegan Chibri	Neilburg SK	Manitou Lake Multiple 4H Club
Fiona Campbell	Dutton ON	Wallacetown Agriculture Society 4H Beef Show
Kohen Kaufmann	Ceylon SK	Young Ranchman's
Kirk Rutten	Carlyle SK	Alameda 4H Beef Club
Riley Leeson	Vauxhall AB	Alberta Jr. Angus Association
Whitney Labiuk	Kitscoty AB	Kitscoty 4H Beef Club
Madison Ethier	Milverton ON	Beef-a-Rama Jr Show & Blackout Jr Show
Wyatt Becker	Acme AB	Summer Synergy & Cody Sibbald Legacy Classic

\$2000 was given to the Canadian Junior Angus Assoc.

2018 WINNING RECIPIENTS

Faith Collins	SK	Winner of BROOKING BLACK ANGEL 8179
<i>WINNING CASH RECIPIENTS</i>		<i>JUNIOR ORGANIZATION OF CHOICE</i>
Louis McDonald	Moose Jaw SK	Young Canadian Simmental Assoc.
Kamry Kaufmann	Ceylon ON	Radville 4H Beef Club
Riley Leeson	Vauxhall AB	Alberta Junior Angus Association
Gage Long	Yellowgrass SK	Weyburn Interclub 4H Regional Show
Emalee Higgins	Knutsford BC	4 Corners 4H Beef Club
Peyton Haslam	Nanaimo BC	Canadian Jr Angus Showdown & Canadian Jr Hereford Bonanza
Keldon Powell	Youngstown AB	East Central Regional Heifer Show

\$3000 was given to the Canadian Junior Angus Assoc.



AS A CALF IN 2017 FEMALE SALE



2017 CWA SR. CALF CHAMPION



2018 CWA SR. CH



Count
BROOKING COUNTIES



CHAMPION FEMALE



2019 FARM FAIR CHAMPION FEMALE



2019 CWA CHAMPION FEMALE



Less
SS 7077



THE PROGRESS OF A CHAMPION



1

Dusty's Countess 22H

292274 - DUST 22H - FEB. 7 2020

SAV 8180 TRAVELER 004
S: SAV 004 DENSITY 4336
 SAV MAY 7238

BAR-E-L NATURAL LAW 52Y
D: BROOKING COUNTESS 7077
 BROOKING COUNTESS 239

bw	ww	yw	milk	sc	ce	mce
3	50	91	21	-	-	-

Following true lot 1 tradition we have a female as soon as you lay eyes on her you know she is special. She is a daughter of Brooking Countess 7077, the reigning two-time supreme champion female at FarmFair and Agribition and a previous lot 1 of this sale. Dusty's Countess 22H is a personal favourite as I love her head, angular front end, sweeping rib shape, wide hip structure and her elegant design. On the move she shares the same soundness and flexibility that helped her dam win two supreme championships. A maternal sister was lot 1 in last year's sale and high seller at \$53,500 to KT Ranches. You know this heifer is destined for greatness combining the fact of being sired by the breed's maternal legend, SAV 004 Density 4436 and the dam being proven in production, who is a powerful female that owns the turf she is on. Here is a grand opportunity to acquire a female you can build a program around. Dusty Rose Cattle Co reserves the right to one successful flush with a minimum of 6 transferable embryos at buyers convenience and sellers cost.



\$53,500 Maternal Sib to Lots 1 & 2

2

Dusty's Countess 26H

292275 - DUST 26H - FEB. 11 2020

DAMERON FIRST CLASS
S: EXAR CLASSEN 1422B
 EXAR PRINCESS 2006

BAR-E-L NATURAL LAW 52Y
D: BROOKING COUNTESS 7077
 BROOKING COUNTESS 239

bw	ww	yw	milk	sc	ce	mce
4.1	62	105	20	-	-	-

Another feature daughter of the impressive Brooking Countess 7077 who was never beaten in division for three consecutive years while being campaigned. Countess finished her career off as a two-time supreme champion female in 2019 at FarmFair and Agribition. Take a look at Dusty's Countess 26H and you will admire her added bone size, hair quality, depth of body and show ring appeal. This heifer is green, and I feel she would look great on a halter and be prime for next summer. A maternal sister was last year's high selling female to KT Ranches for \$53,500.



Greenwood Beauty 23D - Dam

3

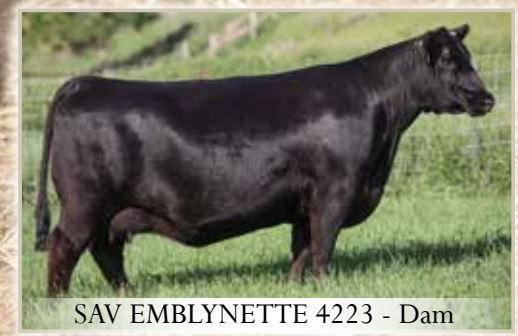
Greenwood Beauty JJP 57H
 2169272 - JJP 57H - January 2020 - BW 82

SAV BISMARCK 5682
 S: BAR-E-L NATURAL LAW 52Y
 BAR-E-L MAGNOLIA 143K

MOHNEN SOUTH DAKOTA 402
 D: GREENWOOD BEAUTY JJP 23D
 TLA BEAUTY 6R

bw	ww	yw	milk	sc	ce	mce
2.3	53	92	22		4.0	7.0

We have previously sold two females in this sale that went on to win Agribition and both in turn were sired by Natural Law. Greenwood Beauty JJP 57H has that same winning look and scale needed to win the big shows. Her dam is exceptional and was unbeaten as a heifer calf herself at all three majors and has that typical Beauty cow family design. The Natural Law females are hard to come by with limited semen availability and then combined with a great cow family on the bottom side. The grandam is the great TLA Beauty 6R who has 87 progeny to date and is the foundation of many leading herd sires and donor dams. Opportunity to acquire a female of this magnitude and pedigree doesn't come around often. Usually if they are this good, they are not for sale.



SAV EMBLYNETTE 4223 - Dam

A **HLB Dusty's Emblynette 004**
 2175833 - HLB 4H - January 14 2020

CONNEALY CAPITALIST 028
S: LD CAPITALIST 316
 LD DIXIE ERICA 2053

SAV HARVESTOR 0338
D: SAV EMBLYNETTE 4223
 SAV EMBLYNETTE 1786

bw	ww	yw	milk	sc	ce	mce
2.3	66	111	28	.65	5	10

Talk about cow power that is destined for the donor pen. You cannot deny the amount of substance, mass, volume and power that HLB Dusty's Emblynette 004 owns. With all her power she is very well made in her structure, sound in her movement and has that maternal head like her dam. Her dam was a \$47,500 purchase from Schaff Angus Valley and is moderate framed and is one of the most potent donors we own. A maternal brother was a top seller in our 2019 bull sale for \$50,000 to ZWT Ranch and was crowned Grand Champion Bull at FarmFair and Reserve Grand Champion at Agribition and was a top ten Finalist in both Supreme's. There will be 13 maternal brothers in the 2021 Brooking Bull Sale and they are setting a new bar of quality.

5 *Brooking Abigale* 0039

2141065 - JSTN 39H - January 08 2020 - BW 87

BROOKING BANK NOTE 4040
S: BROOKING FIREBRAND 6068
 BROOKING ANNIE K 390
 SAV HESSTON 2217
D: SIEBRING ABIGALE 556
 SAV ABIGALE 914

bw	ww	yw	milk	sc	ce	mce	mce
3.2	54	91	26	-	-	-	-

Brooking Abigale 0039 is a daughter of the \$95,000 Canadian Sires headliner, Brooking Firebrand 6068. Brooking Abigale 0039 is long bodied, angular made, great footed and shows perfect udder development. Her dam is a well-made Hesston daughter with an ideal udder and is a member of the special Abigale family that resides at Siebring Angus and Schaff Angus Valley. A lot of cow power in this pedigree with many greats in the first three generations including the Rose's, Annie K's, Emblynette's and Abigale's.



SAV Abigale 914 - Grandam

6 *KCH Forever Lady* 8H

2153323 - KCH 8H - January 19 2020 - BW 84

SAV BISMARCK 5682
S: BAR-E-L NATURAL LAW 52Y
 BAR-E-L MAGNOLIA 143K
 21AR ROUNDUP 7005
D: EXAR FOREVER LADY 2109
 EXAR FOREVER LADY 6432

bw	ww	yw	milk	sc	ce	mce
2.2	60	106	22	0.69	5.0	8.5

KCH Forever Lady 8H is another direct daughter of Natural Law featured in this sale. She has the typical look of the Natural Law's with her added length, great hair quality, sound movement, extra bone diameter and that maternal look. Her donor dam is part of the Canadian Donors arsenal and was a feature female purchased from Express Ranches and has had countless high quality progeny including a high selling bull for Muirhead's. The udder quality is always great from the Natural Law daughters and they seem to get better with age.



EXAR Forever Lady 2109 - Dam

7 *Greenwood Envious Blackbird 71H*
 2169416 - JJP 71H - January 22 2020 - BW 91

BROOKING BANK NOTE 4040
S: BROOKING FIREBRAND 6068
 BROOKING ANNIE K 390
 EXAR CLASSEN 1422B
D: MICH ENVIOUS BLACKBIRD 1424
 RR ENVIOUS BLACKBIRD 4487

bw	ww	yw	milk	sc	ce	mce
3.4	51	81	23	0.64	2.5	11.5

The Payne's have a great family run operation with leading genetics and their cattle are always well accepted at shows and sales across the country. I was excited to get the pick of the heifer calves and that this Envious Blackbird was one of the girls on the trailer to Brooking. If you love females that have massive rib shape, are stout made, soft haired and full of bred in performance while having a pretty head, then look no further. A maternal sister sold in last year's sale to MJT Cattle Co. Her productive dam has sold 12 progeny to date with an avg just over \$11,000.



60G - Maternal Sister

8 *WFL 34B Black Ruby 2002H*
 2163655 - WFL 2002H - Jan. 1 2020 - BW 67

BROOKING BANK NOTE 4040
S: BROOKING FIREBRAND 6068
 BROOKING ANNIE K 390
 EXAR UPSHOT 0562B
D: THUNDER CREEK RUBY 34B
 THUNDER CREEK RUBY 17Y

bw	ww	yw	milk	sc	ce	mce
1.0	48	79	25		4.0	9.5

Westway Farms sure have a looker offered here with WFL Black Ruby 2002H. A daughter of the \$95,000 Brooking Firebrand 6068 is sure to impress with her style, long and angular front end, wide top end and hair quality to impress any kid with a set of clippers. The dam is a massive bodied female that is easy fleshing and a neat combination of Upshot, Density and Stevenson Bruno.



Brooking Firebrand :: Sire

9

KCH Primrose 18H

2143327 - KCH 18H - February 12 2020 - BW 69

S AV RENOWN 3439

S: S AV RENOVATION 6822

S AV MADAME PRIDE 0151

4M ELEMENT 405

D: KCH PRIMROSE 8005F

RIVERFRONT PRIMROSE 604D

bw	ww	yw	milk	sc	ce	mce
1.1	62	108	21	-	8.0	9.0

KCH Primrose 18H has maternal goodness and future momma cow written all over her. She is very typical of the Renovation daughters with her huge rib shape, easy fleshing ability and udder quality like a dream. The grandam was purchased through this sale and was a popular top seller who developed into a very maternal donor with a perfect udder for KCH. The third dam was also a top selling heifer in this sale that sold to Riverfront Angus Ranch and is the closest descendent to N Bar Primrose 2424 in Canada.



Primrose 604D - Grandam

10 **Schwan's Miss Annie 0031H**

2177174 - SCWN 31H - January 22 2020

S AV RENOWN 3439

S: S AV RENOVATION 6822

S AV MADAME PRIDE 0151

S AV 004 DENSITY 4336

D: BROOKING ANNIE 307

WILLABAR ANNIE 137S

bw	ww	yw	milk	sc	ce	mce
2.2	57	98	21	-	3.5	4.5

We have another daughter of a past lot 1 female from this sale, Brooking Annie 307, who sold to Schwan Angus in 2013 for \$30,000. Schwan Annie 31H looks a lot like her dam at the same age. She is well-made, has a balanced structure and has added muscle shape in a maternal looking package. Her udder development is ideal and would be a safe bet to be perfect as the first daughters of Renovation in production are fantastic. Then add a Density sired dam with a tremendous udder to that equation. Here is a foundation type female offered here.



Brooking Annie 307 - Dam

11

KT Beauty 42H

295009 - KTC 42H - January 7 2020 - BW 66

COLEMAN CHARLO 0256
S: S A V RAINDANCE 6848
S A V BLACKCAP MAY 4136

KBJ JACK BLACK 115R
D: SOO LINE BEAUTY 7147
TLA BEAUTY 6R

bw	ww	yw	milk	sc	ce	mce
-0.3	48	86	19	0.8	9.0	6.5

This heifer hit me real hard when I first saw her on tour this summer. She was deep from end to end and then walked across the pasture with her beautiful head held high and I was sold. Then I found out her pedigree and everything made sense. These Beauty females seem to shine through and stand out in any of the programs that have utilized them. The dam was raised and sold at Soo Line and ended up as a feature donor for U2 and was a top seller in their historic dispersal. It took some arm twisting to convince KT Ranches to let this one go, but I am sure happy they did, and you will be too!



Soo Line Beauty 7147 - Dam

12

Brooking Rose 0121

2155931 - JSTN 121H - Feb. 2 2020 - BW 72

COLEMAN CHARLO 0256
S: S A V RAINDANCE 6848
S A V BLACKCAP MAY 4136

SOO LINE MOTIVE 9016
D: SOO LINE ROSE 1019
E A ROSE 918

bw	ww	yw	milk	sc	ce	mce
0.7	55	102	25	0.71	6.0	4.5

Here is the first daughter of Soo Line Rose 1019 we have ever offered for sale. We always strive to offer quality high-end heifers for this sale, here is a feature! A full sister was the high selling Angus female at \$20,000 in the Rust Mountain View Ranch dispersal selling to Duff Cattle Co, Oklahoma. Maternal brothers include: Brooking Real Estate 6072 who was the second top selling bull at \$47,500 in 2017 to Bar-E-L Angus, Brooking Major 7103 was the high selling bull at \$70,000 in 2018 to ZWT Ranch. The grandam is the beloved EA Rose 918 who has set a standard for what an Angus female should look like and is the mother of the \$125,000 Brooking Bank Note 4040.



Soo Line Rose 1019 - Dam

14

Blairswest *Erica* 5H

2173702 - MJNB 5H - January 24 2020 - BW 85

DAMERON FIRST CLASS
S: COLBURN PRIMO 5153
SILVEIRAS SARAS DREAM 1339
BAR-E-L NATURAL LAW 52Y
D: BAR-E-L ERICA 74A
HF ERICA 339T

bw	ww	yw	milk	sc	ce	mce
3.3	53	83	17	0.33	5.0	8.0

We are extremely proud of the fact that many of these sale heifer's dams sold through this very sale in recent years. Bar-E-L Erica 74A sold for \$9500 to the Blair's family and then went on to win the 2015 Canadian Western Agribition and has since been considered one of the breeds top females and has 96 progeny to date. Many have been the top sellers in Blair's sales. On her own appraisal Blairswest Erica 5H is really neat to look at with her sweeping big rib cage, attractive look with huge fluffy ears, and her back leg sits underneath of her and ties into a deep hip and flank. This heifer would have been in serious contention for a banner this fall at Agribition. I guess she will have to wait for Agribition's 50th!



Bar-E-L Erica 74A - Dam

15

Bar-E-L *Emblynette* 67H

2156310 - YHB 67H - February 06 2020 - BW 86

EXAR CLASSEN 1422B
S: EF COLOSSAL 520
EXAR BLACKBIRD 5877
SAV RESOURCE 1441
D: NORTH PERTH EMBLYNETTE 612
NORTH PERTH EMBLYNETTE 303

bw	ww	yw	milk	sc	ce	mce
2.7	58	105	20	0.49	1.0	2.0

Dave and Lynne Longshore of Bar-E-L Angus have one of the most impressive cowherds in Canada and they always let us pick one of their absolute best for this sale. Dave thinks this might be the best one they have offered to date. I know those are big shoes, but I tend to agree. Dave also gets to see the sire and dam of this heifer every day and knows what she will develop into. The sire won Agribition in 2017 and looks even better today out on grass. The dam is one of the more impressive Resource daughters you will find. She is huge bodied and bold in every direction. Here is a heifer to study.



Colossal - Sire

16 *Brooking Rosilla* 0147

2146959 - JSTN 147H - Feb. 13 2020 - BW 81

SAV RENOWN 3439
S: SAV RENOVATION 6822
 SAV MADAME PRIDE 0151
 BROOKING BANK NOTE 4040
D: BROOKING ROSILLA 6038
 BROOKING ROSILLA 4032

bw	ww	yw	milk	sc	ce	mce
2.6	66	115	21	-	3.0	5.5

Brooking Rosilla 0147 is a daughter of our resident herd sire, SAV Renovation 6822. The first Renovation daughters in production are fabulous and we plan to build a big part of our program around them. Brooking Rosilla 0147 is the epitome of the Renovation daughters with her deep body and has a long and level underline. The dam is a daughter of the \$125,000 Brooking Bank Note 4040 and has a perfect udder and is ideal in her phenotype. Great cow prospect!



Renovation - Sire

17 *Brooking Rose* 0045

2141070 - JSTN 45H - January 10 2020 - BW 70

COLEMAN CHARLO 0256
S: SAV RAINFALL 6846
 SAV BLACKCAP MAY 4136
 SAV HARVESTOR 0338
D: BROOKING ROSE 8210
 EA ROSE 918

bw	ww	yw	milk	sc	ce	mce
1.6	61	111	27	-	-	-

Brooking Rose 0045 is rare in her type and kind as she is as pretty as they come, has a big sweeping rib cage and holds her head high on the move. She has maternal goodness written all over her. Her beautiful two-year old dam did an amazing job her first year in production and it comes as no surprise with her pedigree combination of Harvester x Rose 918. These Rose females are special and are the kind to hold onto. We don't let many of these leave the ranch ever.



EA Rose 918 - Grandam

18 Campbell's Abigale 0099

PENDING - RCW 99H March 6 2020

G A R GRID MAKER
S: SAV BISMARCK 5682
 SAV ABIGALE 0451
 DAMERON FIRST CLASS
D: MTC ABIGALE 6006
 SAV ABIGALE 4006

bw	ww	yw	milk	sc	ce	mce
1.7	59	99	24	-	-	-

Bismarck daughters are always in fashion and you can pick them out from a mile away. They are angular fronted, ideal in their phenotype and once they are in production their udders are tremendous. Campbell's Abigale 0099 will be no exception to the rule and would be fun to show as she is quiet, soft haired and has the show ring look. I think she will look great as a bred and then even better as a pair as her udder development is ideal.



MTC Abigale 6006 - Dam

19 MTC Madame Pride 0091

296285 - MTC 0091H - April 2, 2020

SAV RECHARGE 3436
S: SAV SUPERCHARGER 6813
 SAV MADAME PRIDE 0075
 SAV MUSTANG 9134
D: SAV MADAME PRIDE 2407
 SAV MADAME PRIDE 5290

bw	ww	yw	milk	sc	ce	mce
3.5	59	103	26	-	2	6

This pretty April born heifer will be the first to sell sired by the popular \$235,000 SAV Supercharger 6813. Supercharger is one of the most impressive mature bulls you will ever see. Note this heifer calf is linebred to the immortal SAV Madame Pride 0075, one of the most influential cows in the breed. She is the dam to the \$1.51 million SAV America and the grandam to SAV Renovation. The dam SAV Madame Pride 2407 is a beautiful female and has had many top sellers for MTC Cattle and Mohnen Angus. The high income grandam SAV Madame pride 5290 has had 188 progeny to date with feature sons selling for \$100,000 and \$90,000. Here is a maternal masterpiece both physically and genetically.



Madame Pride 2407 - Dam

20 Wilbar Annie 841H

2148286 - WJD 841H - Feb. 07 2020 - BW 68

STEVENSON TURNING POINT
S: CONLEY SOUTH POINT 8362
 P R LADY 909 4200-587

SIX MILE CHALLENGER 417C
D: WILBAR ANNIE 452E
 ARDA ANNIE 224C

bw	ww	yw	milk	sc	ce	mce
0.9	47	78	28	-	10.0	10.0

Check out the first daughter to sell by the only bull to win both Agribition and Denver, Conley South Point 8362. Conley South Point was a crowd favourite at both of those shows and his semen was in high demand. Wilbar Annie 842H shares her sire's softness of rib, great hair and added bone. Get in on the ground floor and be ahead of the curve with this South Point daughter.



South Point 8362 - Sire

21 Wiwa Creek Bardal 6'20

2168193 - PDE 6H - February 06 2020 - BW 84

S AV HARVEST MOON 2244
S: WIWA CREEK HARVEST MOON 635'16
 WIWA CREEK TILDA 118'11

THUNDER CREEK DENSITY 40Y
D: WIWA CREEK BARDAL 109'16
 WIWA CREEK BARDAL 82'13

bw	ww	yw	milk	sc	ce	mce
3.4	46	82	24	-	5.0	6.5

If you are in search of a heifer for a young or first time show person than you need Wiwa Creek Bardal 6'20. She has already made the rounds around the ring and is ready to be loved. The judge will appreciate her soft appearance, extra substance and sound structure. The fitter's will love her great hair and your parent's will love the cow she turns into. The dam is a maternal proven combination of Density and Motive that will ensure her lasting contribution.

22

Brooking Dixie 0063

2141091 - JSTN 63H - January 15 2020 - BW 78

BROOKING BANK NOTE 4040

S: **BROOKING GOLD COIN 8069**

S A V EMBLYNETTE 4223

WJ JOKER 281X

D: **WJ DIXIE 2307Z**

WJ DIXIE 345X

bw	ww	yw	milk	sc	ce	mce
1.2	52	86	22	-	-	-

Brooking Dixie 0063 is a well-made daughter of the \$50,000 Brooking Gold Coin who was Grand Champion bull at FarmFair and Reserve Grand Champion at Agribition. He was also one of the only two yearling bulls in the top ten in the Supreme at Agribition and the only yearling in the top 5 at FarmFair. Brooking Dixie is stout made, with extra muscle shape in an easy-fleshing package. Dam has an impressive udder and is easy fleshing in a moderate frame.



Brooking Gold Coin - Sire





23

Brooking *Pick of Heifers* 2020

Selection must be completed by March 22, 2021.

A rare opportunity to choose from our entire 2020 heifer calf crop. We always consign some of our top heifers to this sale. However, at the same time we need to balance and build a cowherd. Here is your chance at the untouchables. There are many very exciting heifers to choose from including about 25 ET heifers. There are exciting options out of our donors Brooking Beauty 333, Soo Line Rose 1019, Brooking Rose 5057, SAV Emblynette 4223, Brooking Annie K 390, Soo Line Annie K 9165 and SAV Duke Girl 8161. Without a doubt we have our strongest set of top-end heifers to choose from with many full or maternal siblings to our past high selling bull and females. Including full sisters to the \$57,500 Brooking Mercury 9057, \$62,500 Brooking Rendezvous 8081, \$45,500 Brooking Beauty 8187 and maternal siblings to \$95,000 Brooking Firebrand, \$47,500 Brooking Real Estate 6072 and \$70,000 Brooking Major. I am not sure who I would choose but you would have our full cooperation in helping you with your decision. Selection can be made at any time; however, it must be made by our bull sale on March 22, 2021.



24 *Brooking Annie K 9314*
 2121832 - JSTN 314G - February 23 2019 - BW 85

S A V HARVESTOR 0338
S: S A V CUTTING EDGE 4857
 S A V BLACKCAP MAY 5530

S A V BEST INTEREST 0136
D: BROOKING ANNIE K 390
 SOO LINE ANNIE K 9165



Brooking Annie K 390 - Dam

bw	ww	yw	milk	sc	ce	mce
4.7	60	105	30	0.79	0.5	7.5

AI BRED to S A V RAINFALL 6846 on May 4/20. Due Feb. 10/21. A royally bred SALE FEATURE! One of our absolute favourites from the 2019 calf crop. Brooking Annie K 9314 is a powerful individual that is a future donor candidate for even the most progressive operations. She is a maternal sister to the \$95,000 Brooking Firebrand 6068. The dam is extremely good looking, has a perfect udder, is powerful yet pretty and is a potent donor. The grandam and third dam both won Agribition and are as recognizable as any cow family in Canada. Brooking Annie K 9314 is rare in her kind.



EA Rose 918 - Dam

25

Blair's Rose 642G

2101618 - BBC 642G - March 16 2019 - BW 87

CFCC BLACK JACK 001
S: KR CASINO 6243 OSF
 MALSONS SAVANNAH 27Y

SAV FINAL ANSWER 0035
D: E A ROSE 918
 E A ROSE 738

bw	ww	yw	milk	sc	ce	mce
2.8	55	97	30	0.31	2.5	6.0

AI BRED to CONLEY SOUTH POINT 8362 on May 4/20. Due Feb. 10/21. SALE FEATURE! This heifer was intended to be a feature of the Rose Bowl and since we postponed that sale, we decided for her to be a highlight in this offering. Wow, is all you can say when you see this direct daughter of the breed icon EA Rose 918. Blair's Rose 642G is a high-end phenotype female that is well balanced with a stunning look. She is a maternal sister to the \$125,000 Brooking Bank Note 4040, Soo Line Rose 1019, Brooking Rose 201 and Brooking Country Boy. She is sired by the outcross sire KR Casino 6243 and will be one of the few daughters available in Canada. It only takes one female to propel a program and here she is. Oh, and safe to Conley South Point!



26 **Brooking Rose 9110**
 2098770 - JSTN 110G - February 02 2019 - BW 86

S AV PIONEER 7301
S: S AV PEDIGREE 4834
 SAV BLACKCAP MAY 4136

S AV FINAL ANSWER 0035
D: E A ROSE 918
 EA ROSE 738

bw	ww	yw	milk	sc	ce	mce
1.6	59	102	27	0.86	6.0	11.5



EA Rose 918 - Dam

AI BRED to S AV RENOVATION 6822 on May 4/20. Due Feb. 10/21. Brooking Rose 9110 is another knockout high calibre daughter of EA Rose 918. Many have described EA Rose 918 to be an ideal Angus female. In our previous bull sale 40% of the sale went back to Rose 918. It's amazing how one female can influence the positive outcome of one operation. Brooking Rose 9110 is an angular made and long bodied female. Her full sisters in production have beautiful udders and are very maternal females. We would not sell this female if we had not already retained 5 full sisters that are in production. Take notice of this sale attraction.



Soo Line Rose 1019 - Dam

27

Brooking Rose 9328

2121840 - JSTN 328G - March 20 2019 - BW 75

CONNEALY CAPITALIST 028
S: LD CAPITALIST 316
 LD DIXIE ERICA 2053

SOO LINE MOTIVE 9016
D: SOO LINE ROSE 1019
 E A ROSE 918

bw	ww	yw	milk	sc	ce	mce
-0.5	55	95	29	0.43	8.0	10.5

AI BRED to S A V RAINFALL 6846 on May 4/20. Due Feb. 10/21. Brooking Rose 9328 is among the best females we have ever offered for sale by Brooking. She is a sight to behold as she is ideal in her phenotype, long hipped, massive in her capacity and dimension while being maternal in her design. The dam, Soo Line Rose 1019 has been a favourite of many who have seen her. Her progeny are consistently and predictable at a high level of quality. She has had two of our high selling bulls at \$70,000 and \$47,500 and has a potential sale topper for the 2021 bull sale. She has had multiple daughters in Rust's Champion pens at the NWSS. Embryos have been in high demand topping at \$4,000 per embryo. The grandam is the maternal matriarch EA Rose 918. Here is a female selling in the prime of her life and one to tie onto.



SAV President 6847 - Sire

28 *Carlson Abigale 9054*
 AAA19837184 - February 01 2019

COLEMAN CHARLO 0256
S: SAV PRESIDENT 6847
 SAV BLACKCAP MAY 4136

BROOKING BANK NOTE 4040
D: CARLSON ABIGALE 7062
 SAV ABIGALE 1821

bw	ww	yw	milk	sc	ced	cem
3	69	115	15	-	3	4

PE to DURALTA 1676 PACEMAKER 5G from May 1 - July 1/20. Estimated Due Mar. 1/21. Carlson's Abigale 9054 is one of the most three-dimensional females you will ever see. She has an amazing amount of shape to her hip and rib. It would be very difficult to find one with more depth of body than this powerhouse named Carlson's Abigale 9054. She is sired by the \$750,000 SAV President and out of a Brooking Bank Note 4040 first calf heifer. Talk about power in the blood. Just imagine the sons out of this donor candidate.

29 KCH Beauty 918G

2111103 - KCH 918G - January 19 2019 - BW 81

CONNEALY EARNAN 076E

S: BROOKING BANK NOTE 4040
EA ROSE 918

RR 7407 RAINMAKER 2154

D: TLA BEAUTY 6R
TERRLENE BEAUTY 35F

bw	ww	yw	milk	sc	ce	mce
1.4	54	90	18	0.37	4.0	10.0

AI BRED to COLEMAN BRAVO on Apr 22/20 (safe) Due Jan. 29/21. PE to KCH 904G from May 17 - Jun 30/20.

Yes, you are reading her pedigree right. We have a direct daughter of our #1 income female TLA Beauty 6R. KCH purchased eggs from us and are sharing this very exciting female as they are limited on space at their BC operation. I look at this direct daughter of Brooking Bank Note 4040 and out of Beauty 6R and I see her being a herd bull factory. You will see the Beauty cow family responsible for many of our high sellers and features in this sale and we are currently flushing three Beauty females. Study the Beauty cow family and you will see they excel whichever operation has used them. Brooking, Rust Mountain View Ranch, ZWT Ranch, Coleman Angus, U2 Angus, Greenwood Angus and others. Her power will blend perfectly with service to Bravo.



TLA Beauty 6R - Dam

30 Riverfront Missy Gal 914G

2106898 - RFA 914G - January 15 2019 - BW 78

LD CAPITALIST 316

S: MUSGRAVE 316 STUNNER
MCATL BLACKBIRD 831-1378

SOO LINE MOTIVE 9016

D: BROOKING MISSY GAL 310
FLAG MISSY GAL 90568

bw	ww	yw	milk	sc	ce	mce
0.0	58	99	21		8.0	9.0

AI BRED to HF ALCATRAZ 60F on April 5/20 (safe) Due Jan 12/21. PE to Brooking Renovation 8099 from April 17 - May 20/20

Riverfront Angus Ranch have always consigned their absolute best to this sale and in turn have done very well for their new owners. Riverfront Missy Gal 914G is a daughter of the popular Musgrave 316 Stunner. She is pretty fronted, long bodied and gentle natured. Her dam was purchased through this sale as a top seller and is a productive Motive daughter. The grandam is Flag Missy Gal 90568 who has Elite status with the CAA and had the second top selling bred in last year's sale for \$25,500 to ZWT Ranch.



Flag Missy Gal - Grandam

31 *Brooking Tip Top 9115*

2088996 - JSTN 115G February 05 2019 - BW 83

BROOKING BANK NOTE 4040
S: **BROOKING FIREBRAND 6068**
BROOKING ANNIE K 390

BROOKING BLACK INK 4019
D: **BROOKING TIPTOP 6156**
TLA TIPTOP 26R

bw	ww	yw	milk	sc	ce	mce
3.2	57	95	25	-	1.0	8.0

PE to DURALTA 1676 PEACEMAKER 5G from May 1 - July 5/20. Estimated due April 4/21.

A direct daughter of Brooking Firebrand 6068. Firebrand has seen heavy use at many top operations across both North and South America as well as now being used in Australia. The reports we are hearing back are excellent. They have well-made structure, are balanced and seem to be a foot improver. Brooking Tip Top 9115 is the right kind and perfect example.



32 *Brooking Blackbird 9102*

2088985 - JSTN 102G - January 29 2019 - BW 82

BROOKING BANK NOTE 4040
S: **BROOKING FIREBRAND 6068**
BROOKING ANNIE K 390

SAV 004 DENSITY 4336
D: **BROOKING BLACKBIRD 206**
FLAG MISS BLACKBIRD 90548

bw	ww	yw	milk	sc	ce	mce
2.9	41	68	22	-	3.0	9.0

AI BRED to S A V RAINFALL 6846 on May, 4/20. Due Feb. 10/21.

Brooking Blackbird 9102 is a well-made daughter of Brooking Firebrand 6068. She is level hipped, straight topped and clean fronted. She stands on excellent feet and is very similar in design to her Density sired dam. Note she is safe to her AI service to SAV Rainfall 6846.



33 Anchorage Black Angel 9227

2099034 - BOHR 227G - April 20 2019 - BW 80

PLAINVIEW LUTTON E102
S: PLEASANT VALLEY LUTE 1207
 CHERRY KNOLL ELSA 8014

S A V NET WORTH 4200
D: WERNER BLACK ANGEL 1299
 CLEARWATER BLACK ANGEL 395

bw	ww	yw	milk	sc	ce	mce
1.5	50	92	26	0.44	10.0	12.5

PE to BROOKING BLUE FIRE 9316 from May 12 - May 31 (observed bred on May 18). Due Feb. 25/21.

We have two excellent maternal sisters from the Anchorage program. This late April is a standout daughter of their leading donor Werner Black Angel 1299 who has 80 progeny to date. Anchorage Black Angel 9227 is a stout, deep, great haired, and an attractive female with a quiet nature. The Lute daughters are sought after with limited semen availability and they always have that attention-grabbing look. Her service to Blue Fire, a full brother to Firebrand will be an exciting services with a strong ROI.



Werner Black Angel 1299 - Dam

34 Anchorage Black Angel 9803

2139699 - BOHR 803G - May 04 2019 - BW 71

V A R DISCOVERY 2240
S: PF OKLAHOMA 6625
 PF 5682 HENRIETTA PRIDE 0533

S A V NET WORTH 4200
D: WERNER BLACK ANGEL 1299
 CLEARWATER BLACK ANGEL 395

bw	ww	yw	milk	sc	ce	mce
-1.3	47	92	31	1.22	13.0	13.0

AI BRED to BROOKING BANK NOTE 4040 on May 8/20. Due Feb. 15/21.

Anchorage Black Angel 9803 is a young heifer and was a natural calf at the side of her prolific dam Werner Black Angel 1299. She will be the first to sell out of Canadian Sires calving ease specialist, PF Oklahoma 6625. If you're in search of a low birth female with some added outcross genetics that are backed by some incredible foundation females, Werner Black Angel 1299 and Sitz Henrietta Pride 643T than double click on this female. The service to Bank Note will only add in more great cow power to an already stacked pedigree.



6017 - \$30,000 maternal sib

35 *Brooking Beauty* 9006

Twin - 2171324 - JSTN 6G - Jan 1 2019 - BW 45

CONNEALY CAPITALIST 028

S: LD CAPITALIST 316
LD DIXIE ERICA 2053

BSF HOT LOTTO 1401

D: BROOKING BEAUTY 7022
TLA BEAUTY 6R

bw	ww	yw	milk	sc	ce	mce
0.3	64	108	25	-	-	-

PE to BROOKING RENOVATION 9313 from May 1 - June 1/20. Estimated due Feb. 27/21.

Here is an outcross to most Canadian genetics with a leading cow base, the Beauty's. Brooking Beauty 9006 is easy fleshing and thick made. She shows good udder development and teat placement. The dam is one of the best among her calf crop and is well-made in a moderate size. She is exposed to a Renovation son we kept to use in our program and is a son of the special Brooking Rose 201. We like him a lot.



TLA Beauty 6R - Grandam

36 *Brooking Rosilla* 9011

2083931 - JSTN 11G - January 02 2019 - BW 76

SAV RENOWN 3439

S: S A V RENOVATION 6822
SAV MADAME PRIDE 0151

BROOKING BANK NOTE 4040

D: BROOKING ROSILLA 6038
BROOKING ROSILLA 4032

bw	ww	yw	milk	sc	ce	mce
2.4	70	121	21	-	4.0	5.0

AI BRED to S A V RAINFALL 6846 on May 4/20. Due Feb. 10/21.

A Renovation daughter that is as wide as she is tall. A tank of a female with worlds of dimension and is sure to have a beautiful udder claiming a masterful combination of Renovation, Bank Note, Motive and Hoover Dam. She is safe to early AI service to the proven calving ease specialist SAV Rainfall 6846.



37 *Brooking Lady* 9074

2088920 - JSTN 74G - January 20 2019 - BW 81

CONNEALY EARNAN 076E

S: BROOKING BANK NOTE 4040

E A ROSE 918

S A V IRON MOUNTAIN 8066

D: CSI LADY OF THE PEAK 5Y

LADY OF PEAK DOT 476S

bw	ww	yw	milk	sc	ce	mce
3.9	48	85	7	-	-1.0	10.0

**AI BRED to S A V RAINFALL 6846 on Apr. 25/20.
Due Feb. 1/21.**

Brooking Lady 9074 is a neat made Bank Note daughter that stands on excellent feet and is sure to catch your attention. It's hard to get them better made than this girl. Her powerful and extremely quiet dam has previous progeny selling to Carlson's Angus, W Sunrise Angus, Josh Herauf and Jeff Littlejohn. A full brother gets a lot of attention from visitors to the bull pen.



Brooking Bank Note 4040 - Sire

38 *Brooking Black Betty* 9062

2088908 - JSTN 62G - January 17 2019 - BW 81

CONNEALY EARNAN 076E

S: BROOKING BANK NOTE 4040

E A ROSE 918

DAMERON FIRST IMPRESSION DDF

D: MICH BLACK BETTY 1308

MICH BLACK BETTY 908

bw	ww	yw	milk	sc	ce	mce
2.7	42	73	21	-	2.0	7.0

**AI BRED to SITZ MAJOR on April 7/20.
Due Jan. 14/21.**

There sure is performance bred into this daughter of the \$125,000 Brooking Bank Note 4040. Brooking Black Betty 9062 has worlds of rib shape, dimension, bone and hair. A maternal brother had the second heaviest weaning weight of the 2020 calf crop. He is a truck. Bred safe to Sitz Major an outcross sire owned by Belvin Angus.



Sitz Major - Service Sire

39

Brooking Lassie 9120

2088997 - JSTN 120G - February 08 2019 - BW 89

CONNEALY EARNAN 076E

S: BROOKING BANK NOTE 4040

E A ROSE 918

WIWA CREEK MONARCH 53'08

D: BROOKING LASSIE 378

REMINGTON LASSIE 139S

bw	ww	yw	milk	sc	ce	mce
4.5	52	94	17	0.76	0.0	7.0

AI BRED to S A V RAINFALL 6846 on May 4/20.

Due Feb. 10/21.

It's hard to make them any more balanced and well-made than Brooking Lassie 9120. She is level hipped, clean fronted and deep ribbed. Her dam is very nice uddered and gets noticed by visitors to the ranch. They are extremely similar in kind.



40

Brooking Rosebud 9019

2083937 - JSTN 19G - January 04 2019 - BW 76

S A V REGISTRY 2831

S: S A V SENSATION 5615

S A V BLACKCAP MAY 4136

S A V INTERNATIONAL 2020

D: REMITALL F ROSEBUD 6E

REMITALL F ROSEBUD 196A

bw	ww	yw	milk	sc	ce	mce
3.4	64	111	20		-1.0	0.0

AI BRED to SITZ MAJOR on April 6/20. Due Jan. 13/21

Brooking Rosebud 9019 was an in-dam purchase from Remitall Farms and was one of the top selling females in the power and perfection. That fall Remitall Rosebud 6E won her division at Olds Fall Classic, FarmFair and Agribition. The grandam has premier status with the CAA. This Sensation daughter will make a fabulous cow and has an exciting service to the outcross Sitz Major.



41

Brooking Erica 9023

2083944 - JSTN 23G - January 04 2019 - BW 64

CTS REMEDY 1T01

S: ELLINGSON HOMEGROWN 6035
EA BLANCHE 4137

BROOKING BANK NOTE 4040

D: BROOKING ERICA 7048
BROOKING ERICA 4111

bw	ww	yw	milk	sc	ce	mce
0.9	61	106	27	-	7.0	12.0

AI BRED to CONLEY SOUTH POINT 8362 on Apr. 15/20. Due Jan. 22/21.

Brooking Erica 9023 is sired by Ellingson Homegrown who is an excellent outcross calving ease specialist. She is long bodied from end-to-end, has extra depth of body and is supported by a very strong footed and uddered Bank Note daughter on the bottom side. Look at the extra exciting and early AI service to the Agribition and Denver champion bull Conley South Point. His semen was exclusive and extremely valuable so take advantage of this opportunity to get ahead of the curve.



South Point - Service Sire

42

Brooking Tibbie 9125

2088999 - JSTN 125G - Feb. 11 2019 - BW 73

CTS REMEDY 1T01

S: ELLINGSON REMEDY 6452
EA BLANCHE 7921

BAR-E-L NATURAL LAW 52Y

D: PM TIBBIE 2'17
PM TIBBIE 56'14

bw	ww	yw	milk	sc	ce	mce
1.3	56	103	30	-	4.0	9.0

AI BRED to SITZ MAJOR on April 15/20. Due on Jan.22/21

Brooking Tibbie 9125 is a low birth, smooth made and has an angular and clean front end. The dam was purchased from Poplar Meadows and is a direct daughter of Natural Law.

43

Brooking Pansy 9108

2088990 - JSTN 108G - February 01 2019 - BW 90

S AV HARVESTOR 0338
S: **BROOKING HEIRLOOM 6146**
E A ROSE 918
HF KODIAK 5R
D: **MISS BAN PANSY 12W**
PANSY OF PEAK DOT 803S

bw	ww	yw	milk	sc	ce	mce
4.4	48	90	21	-	0.0	7.0

AI BRED to CONLEY SOUTH POINT 8362 on May 5/20. Due Feb. 11/21.

Make sure to check out Brooking Pansy 9108. She is a powerful female that is wide end-to-end, has extra depth of body and that easy fleshing hip that hangs over her back leg. She has that production and performance bred into her. Her sire is a Harvester son that is a maternal brother to Bank Note 4040 that we kept for ourselves to use. He unfortunately had an early injury before he was well known. Her dam has earned Premier status with the CAA. There will not be many opportunities to purchase females carrying service to Conley South Point this fall.



Miss Ban Pansy 12W - Dam

44

Brooking Lady 9117

2098811 - JSTN 117G - February 07 2019 - BW 98

S AV HARVESTOR 0338
S: **S A V CUTTING EDGE 4857**
S AV BLACKCAP MAY 5530
SOO LINEYELLOWSTONE 6344
D: **SOO LINE LADY 8058**
JL LADY 06 112

bw	ww	yw	milk	sc	ce	mce
4.9	56	101	21	0.27	0.5	3.5

AI BRED to SITZ MAJOR on Apr. 4/20. Due Jan. 11/21.

Take notice of this maternal sister to the \$50,000 Reserve Grand Champion bull at the 2016 Agribition. If you want size, power and performance along with phenotype than here is your female. She will raise the heavyweight kind and have the hair and look to top sells and win shows.



Soo Line Lady 8058 - Dam

45 *Brooking Maureen Emilie 9052*
 2088894 - JSTN 52G - January 16 2019 - BW 89

SAV HARVESTOR 0338
S: SAV CUTTING EDGE 4857
 SAV BLACKCAP MAY 5530
 HF KODIAK 5R
D: SOO LINE MAUREEN EMILIE 0144
 BAX MAUREEN EMILIE 243-559

bw	ww	yw	milk	sc	ce	mce
3.7	58	100	21	0.46	3.0	7.0

AI BRED to CONLEY SOUTH POINT 8362 on Apr. 17/20. Due Jan. 24/21.

These Cutting Edge females all share the same width, dimension and scale performance. Brooking Maureen Emilie 9052 is a daughter of one of the best Kodiak daughters in existence and is the grandam to Wilbar's herd sire Brooking Rewind. This cow family stands the test of the time, the grandam looked exactly the same year-round and was in production until she was 14 years old. Again, another highlight early service to Conely South Point the reigning Agribition and Denver Champion bull.

46 *Brooking Queen 9016*
 2083933 - JSTN 16G - January 04 2019 - BW 81

SAV HARVESTOR 0338
S: SAV CUTTING EDGE 4857
 SAV BLACKCAP MAY 5530
 SOO LINE MOTIVE 9016
D: BROOKING QUEEN 305
 SCR QUEEN 50852

bw	ww	yw	milk	sc	ce	mce
3.3	54	99	23	0.25	4.0	8.0

AI BRED to SAV RAINFALL 6846 on Apr. 18/20. Due Jan. 25/21.

Brooking Queen 9016 is another powerhouse sired by the SAV Cutting Edge 4857. She shows nice teat size and placement and shows her udder will be similar to her Motive sired dam. Early service to SAV Rainfall will be a great combination and should pay dividends.

47

HLB Lady 911

2083521 - HLB 11G - February 09 2019 - BW 85

GAMBLES HOT ROD
S: SILVEIRAS STYLE 9303
SILVEIRAS ELBA 2520

VISION UNANIMOUS 1418
D: BROOKING LADY 4007
LADY OF PEAK DOT 476S

bw	ww	yw	milk	sc	ce	mce
3.8	50	87	15	-	-	-

**AI BRED to SITZ MAJOR on May 5/20.
Due Feb.11/21.**

HLB Lady 911 is a sharp and attractive fronted with a neck that comes out high of the shoulder. This heifer is halter broke and is as quiet as they come. She has great hair and is sired by the leading show heifer sire, Silveiras Style 9303. Who has sired as many champions as any sire across all the breeds. The dam is a long-bodied female that has a well-made structure with sound feet and udder.



48

Brooking Dolly 9141

2089014 - JSTN 141G - February 20 2019 - BW 88

SAV RESOURCE 1441
S: BROOKING BLACK INK 4019
FLAG MISSY GAL 90568

SAV INTERNATIONAL 2020
D: BROOKING DOLLY 5038
FLAG DOLLY 00698

bw	ww	yw	milk	sc	ce	mce
4.0	51	94	20	-	-2.0	3.0

**AI BRED to S A V RAINFALL 6846 on May 4/20.
Due Feb. 10/21.**

Brooking Dolly 9141 is a moderate framed female that is a fault free type. She doesn't overly power you in any direction but is well-made and smooth from front to back and is the kind you put in the herd and earns her keep year in and year out.





49 *Brooking Beauty 333*
 1728370 - JSTN 33A - Jan 31 2019 - BW 86

S AV HERITAGE 6295
S: S AV HARVESTOR 0338
 S AV EMBLYNETTE 7749
 RR 7407 RAINMAKER 2154
D: TLA BEAUTY 6R
 TERRLENE BEAUTY 35F

bw	ww	yw	milk	sc	ce	mce
2.8	58	99	29	-	4.0	8.0

A) 3 embryos sired by SAV Renovation 6822
B) 3 OR 5 embryos sired by SAV Territory 7225
 -Embryos stored at Yackleys - USA

Brooking Beauty 333 has been an anchor of our program lately and we will continue to use her influence heavily in the years to come. She is a sight to behold and has unbelievable amounts of shape and dimension and is extremely easy fleshing. She has true Angus breed character and always transmits it to her progeny. We walk a son and are flushing two daughters. Progeny in two calf crops have sold for \$57,500, \$45,000, \$36,000, \$31,000, \$26,500, \$23,500, \$20,000, \$18,000 and many other for 5 figures and her career is just getting started.



Brooking Mercury 9057 - Son

50

Top Line Lady 102

2031138 - IMP 102Y - February 28 2011

SITZ TRAVELER 8180
S: S A V 8180 TRAVELER 004
BOYD FOREVER LADY 8003
SA F 598 BANDO 5175
D: GAMBLES LADY 634
CHAMPION HILL LADY 703

bw	ww	yw	milk	sc	ce	mce
5.6	64	107	29	0.80	-3.0	5.0

- A) 3 embryos sired by Brooking Bank Note 4040
 - B) 3 OR 5 embryos sired by Bar-E-L Natural Law 52Y
 - C) 3 OR 5 embryos sired by Hoover No Doubt
- Embryos stored at Bow Valley - Bassano, AB

Top Line Lady 102 was a top selling cow at the Werner dispersal and daughters were top selling cow, bred and heifer calf in that offering. She is a powerful, long bodied, level hipped, wide pin set, great uddered while still pretty and angular. A timeless pedigree 004 x 5175 x Saugahatchee. A son sold last year to J Square S Angus and we retained a son for ourselves. There are many impressive calves on the ground this year out of her. There are three exciting options on offer.



Swigart

JSTN 157G - Son

51

Brooking Annie K 390

1764389 - JSTN 90A - March 24 2013 - BW 76

SAV BISMARCK 5682
S: S A V BEST INTEREST 0136
SAV EMBLYNETTE 8172
BAR-E-L THOR 6T
D: SOO LINE ANNIE K 9165
SOO LINE ANNIE K 6271

bw	ww	yw	milk	sc	ce	mce
2.8	53	92	41	1.17	3.0	8.0

- A) 3 embryos sired by SAV Raindance 6848
 - B) 3 embryos sired by Hoover No Doubt
- Embryos stored at Bow Valley - Bassano, AB

Brooking Annie K 390 is an extremely impressive female that is deep bodied and wedges up into an angular front end. She has a perfect udder and an extremely high degree level of phenotype. She is most noted as the dam of the \$95,000 Brooking Firebrand 6068. His influence and popularity are growing rapidly worldwide. Here are two exciting mating's available. The Raindance females are going to make great cows and Hoover No Doubt semen is extremely rare and hard to find.



Brooking Firebrand 6068 - Son

52 Soo Line Annie K 9165

1504834 - SOO 165W - January 31 2009 - BW 90

Sire TC STOUT 407
BAR-E-L THOR 6T
 BAR-E-L 365 ENCHANTRES 36J
Dam CUDLOBEYELLOWSTONE 80M
SOO LINE ANNIE K 6271
 SOO LINE ANNIE K 3012

bw	ww	yw	milk	sc	ce	mce
3.4	42	80	32	0.60	6.0	10.0

- A) 3 embryos sired by Brooking Gold Coin**
B) 3 OR 5 embryos sired by Bar-E-L Natural Law 52Y
 -Embryos stored at Bow Valley, Bassano, AB

Soo Line Annie K 9165 has been a prolific producer as the dam of the \$63,000 Brooking Rendezvous, \$30,000 Brooking Trendspotter and her most famous daughter is, Brooking Annie K 390, who is the dam of the \$95,000 Brooking Firebrand. Soo Line Annie K 9165 was a RBC Supreme Champion female and was at side of her dam when they won Champion female at the World Angus Forum. I am not sure which one of these mating I would choose first but I am excited about them all.



Brooking Rendezvous 8081 - Son

53 SAV Duke Girl 8161

2094685 - IMP 8161U - Feb 29 2008

Sire SAV 8180 TRAVELER 004
S: SAV NET WORTH 4200
 SAV MAY 2410
Dam CARTRACKER 305
D: A C DUKE GIRL 57
 A C DUKE GIRL 330

bw	ww	yw	milk	sc	ce	mce
2.6	45	83	40	1.35	0.0	4.0

- A) 3 embryos sired by Bar-E-L Natural Law 52Y**
 -Embryos stored at Bow Valley, Bassano, AB

SAV Duke Girl 8161 is one of the most angular made females you can find. She is pictured here at 11 years of age and is as sound as ever. Study her pedigree and you will find her and her dam's influence in the SAV program. If you are at Brooking make sure to check out her progeny and the 4 daughters, we have retained.

They are good. A Natural Law could be the big ticket..



Natural Law 52Y - Service Sire



PLEASE JOIN US ON MONDAY, MARCH 22
WE HAVE 100 BULLS ON TEST AND THEY ARE BY FAR OUR BEST SET TO DATE





THANK YOU
TO OUR FAMILY, FRIENDS AND CUSTOMERS FOR ALL THAT YOU DO FOR US

BROOKING

— ANGUS RANCH —

BOX 813 - RADVILLE, SK - S0C 2G0



RETURN POSTAGE GUARANTEED
PORT DE RETOUR GARANTI

WWW.BROOKINGANGUSRANCH.COM

Open Book Invitational
CLOSEOUT AT 7PM ON NOV. 23