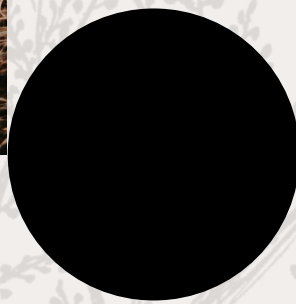
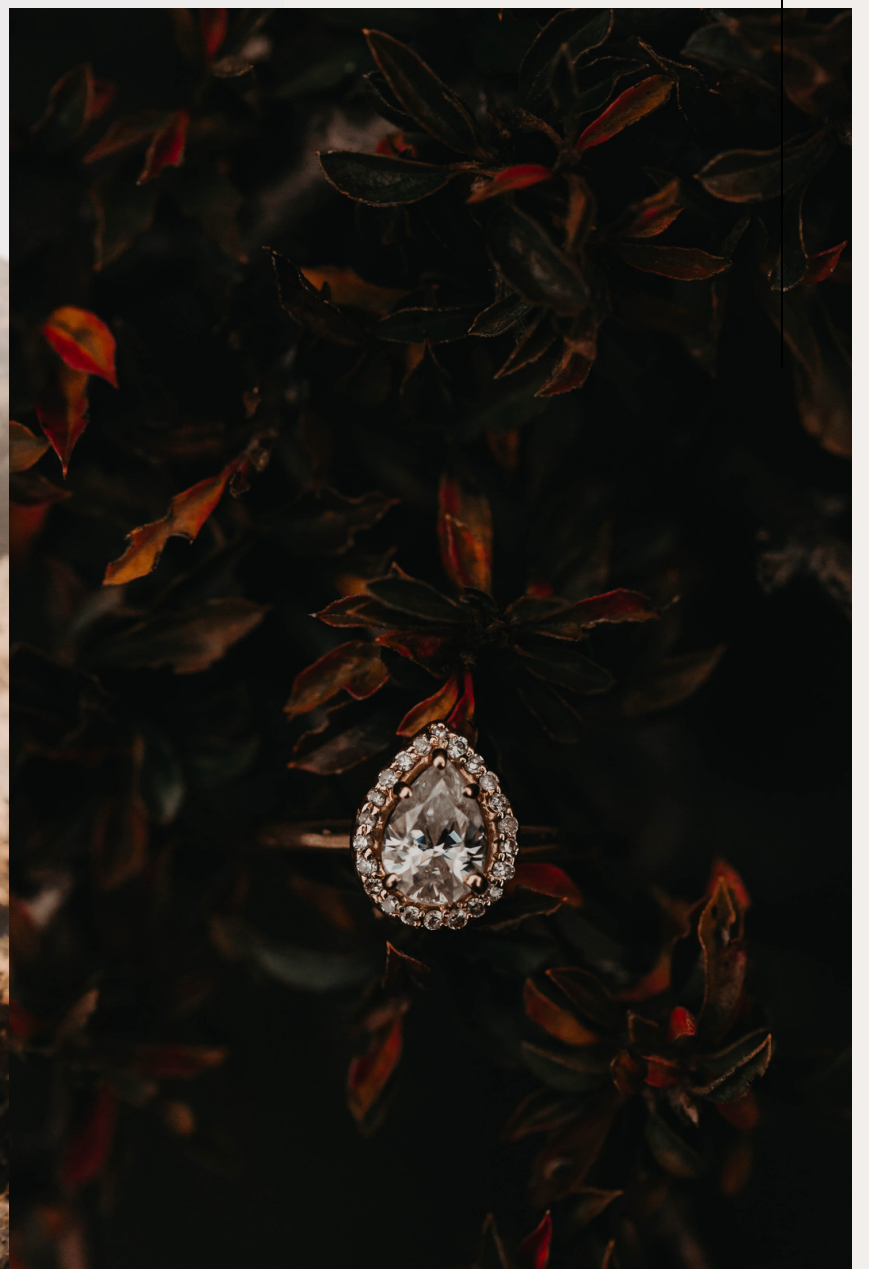




*fall engagement session*  
STYLE GUIDE

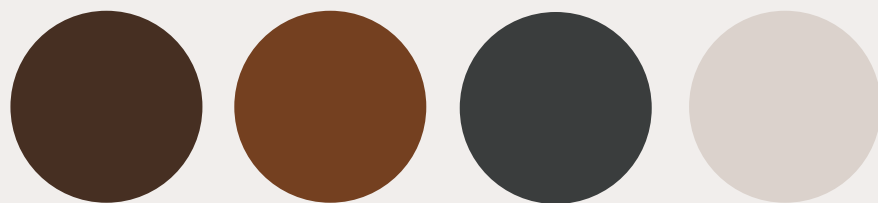




## PALETTE ONE:

---

*Moody grey/blue & cream with dark brown and deep orange accents.*



## PALETTE TWO:

---

*Edgy blacks and greys, a rich purple and a faded denim blue.*



## PALETTE THREE:

---

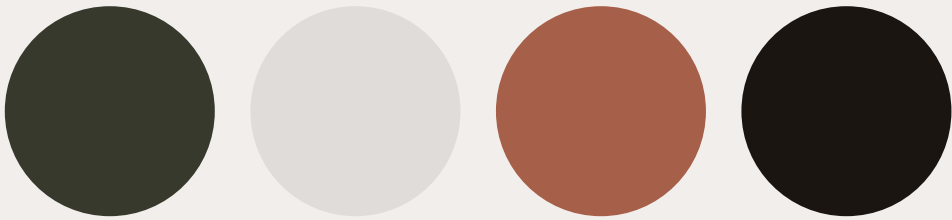
*Gentle mix of light and dark browns, dark wash jeans and a hint of light sea glass.*



---

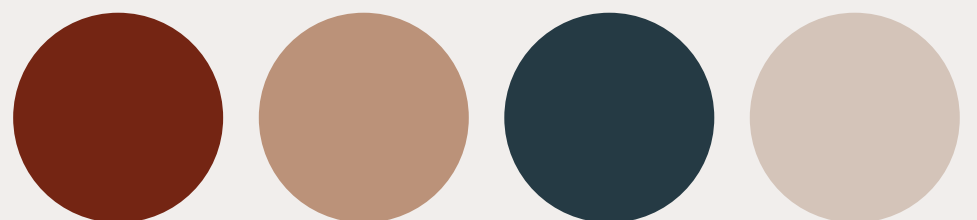
## PALETTE FOUR:

*Bold darks with contrasting lights tied together with pops of deep orange and green.*



## PALETTE FIVE:

*Rust orange and denim blue balanced with varying shades of browns and creams.*



# choosing fall colours

## NEUTRALS:

Neutral colors work AMAZING for a fall session because they allow all the fall colors to truly pop and be the star of the show. Warm creams, browns, and rich blacks and greys pair well together or with one or two pops of color. To keep all neutral outfits from being boring, be sure to choose one-two lighter neutrals and pair them with one-two dark neutrals.

## MUTED TONES:

Muted shades of colors work perfectly for fall sessions because they naturally *\*feel\** like fall. Shades of delicious moody blues, greens, reds, oranges, pinks and even purples all go very well with the fall colors. Choose up to two different muted tones and then one or two neutrals for a beautiful palette.

## RICH SHADES:

If lots of neutrals and muted colors isn't your think, I recommend choosing one rich gem color, a deep emerald for instance and pairing it with neutrals so it really shines.

ENTIC  
•  
PASSIONATE



# extra tips

## LAYERS:

Layers can be such a great way to add visual interest and a great way to up your style game for a fall engagement session outfit! This goes for both guys and girls!

## ACCESSORIES:

Not every outfit needs accessories, but a few well matched accessories can be the final piece to the perfect fall outfit! A felt hat, beautiful and simple jewelry for the ladies, and a good watch for the men are some of my personal favorites!

