

Philanthropic Funding

For Parent, Caregiver, and
Family Support Programs
in the Global South



Study Background

Objective

ECFG commissioned this exercise to map foundation investments in parenting and caregiving across the Global South. This mapping explored the who, what, when, where, and how of these investments.

Methodology

The mapping exercise used mixed methods to obtain a snapshot of funding for parent, caregiver, and family support programs in the Global South among philanthropic organizations.

Surveys: 23

Interviews:
15

Review of 20
Public
Resources

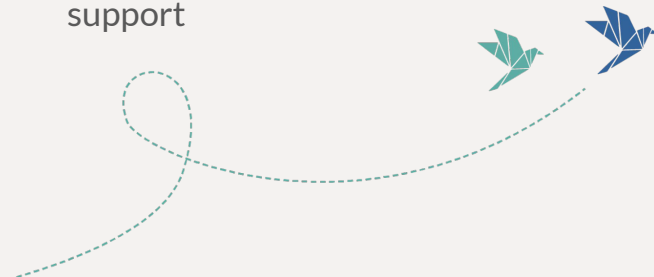
Things to keep in mind...

Study Parameters:

1. Investments in the Global South in both stable development and humanitarian / crises contexts;
2. Support to parents, caregivers, and families that focuses on child outcomes;
3. A definition of parents, caregivers, and families that includes adults that are biological or non-biological, but provide care and support daily to children;
4. A life cycle approach that considers supports to adults who have children of all ages.

Limitations:

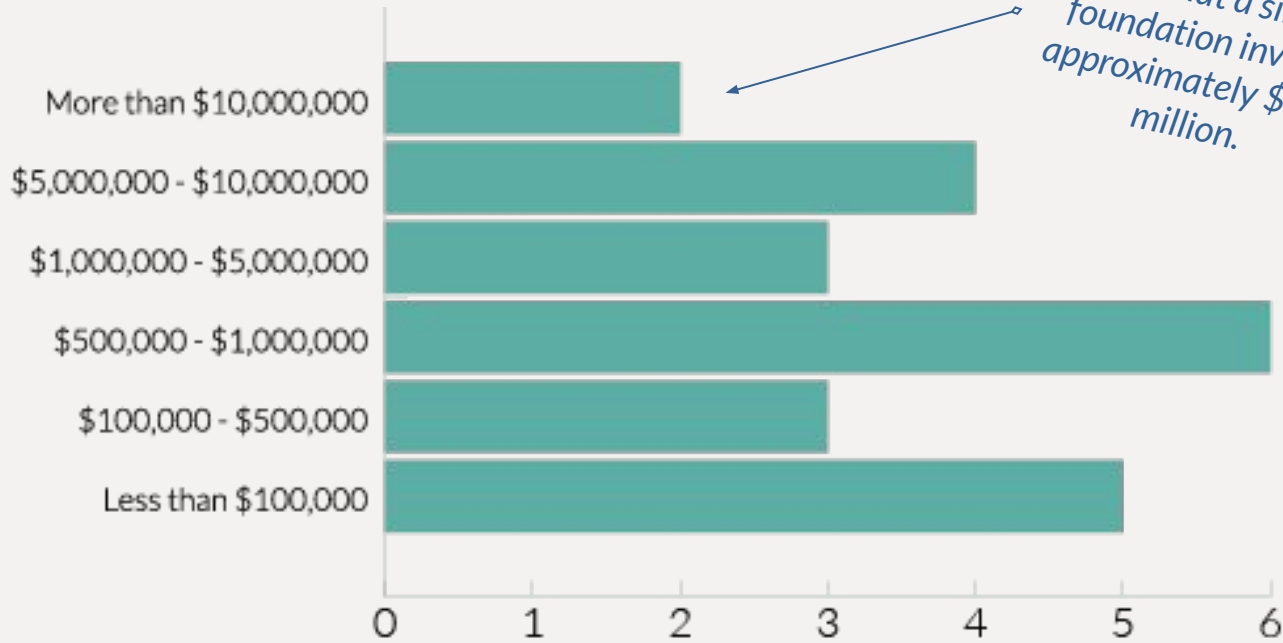
1. Low response rate
2. Small sample size
3. Bias towards early childhood development and child protection
4. Integration of parenting support into other programs, invisible investments
5. Differing definitions of parenting support



Range of Funding for Parent, Caregiver, Family Support Programs



Note that a single foundation invests approximately \$138 million.

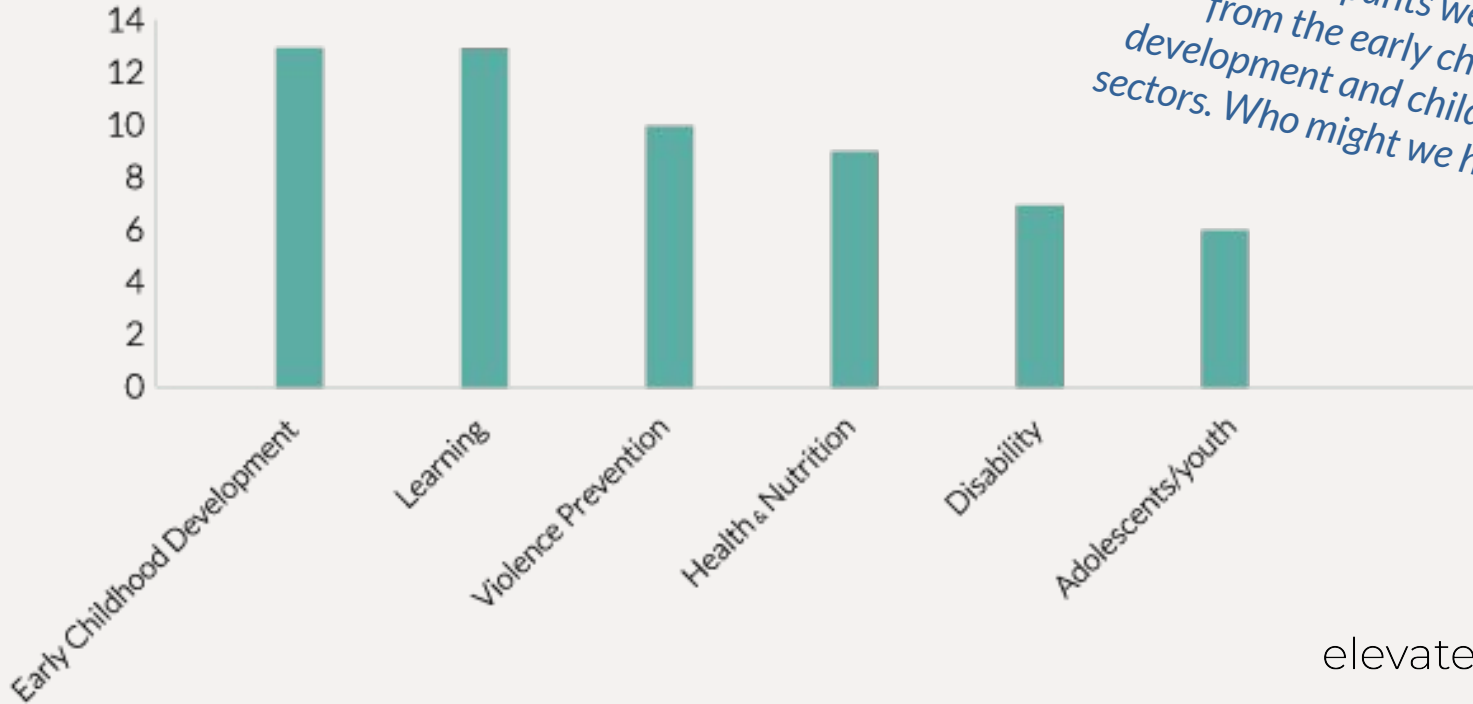


This study identified a total of ~\$268 million investments from participating foundations.

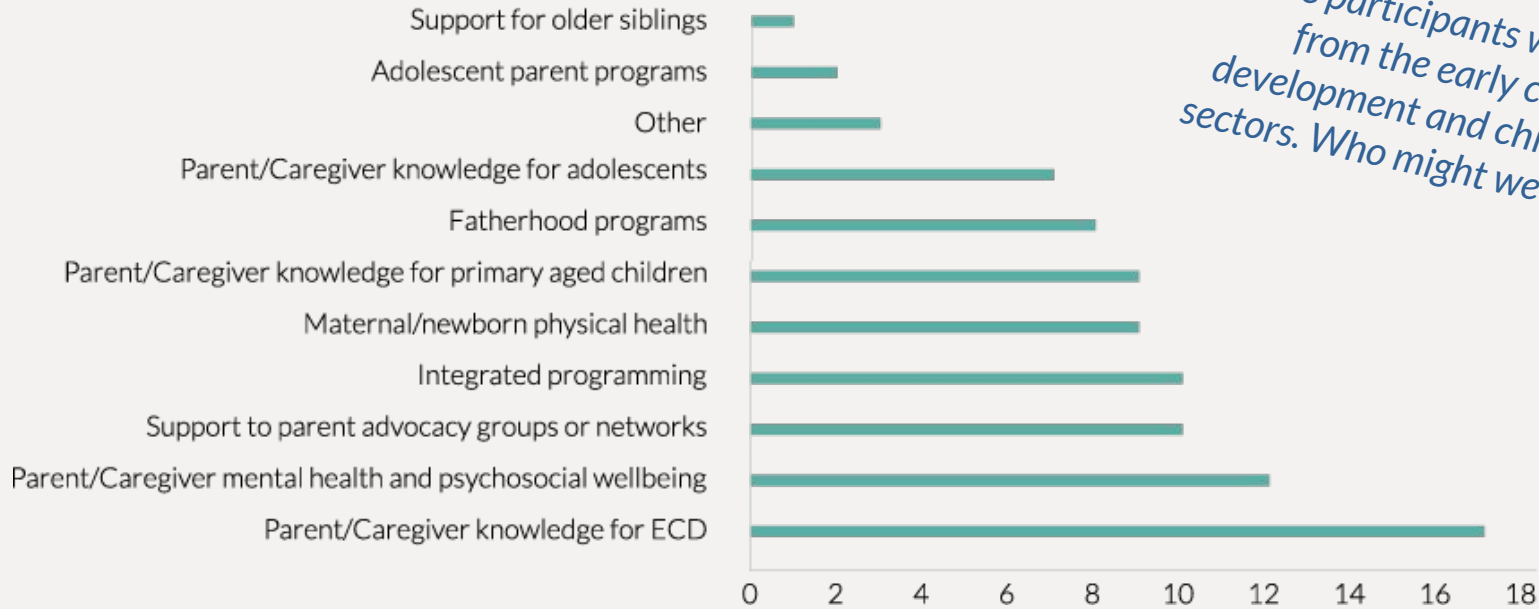
Outcomes for Funding Parent, Caregiver, Family Support Programs



Note participants were primarily from the early childhood development and child protection sectors. Who might we have missed?

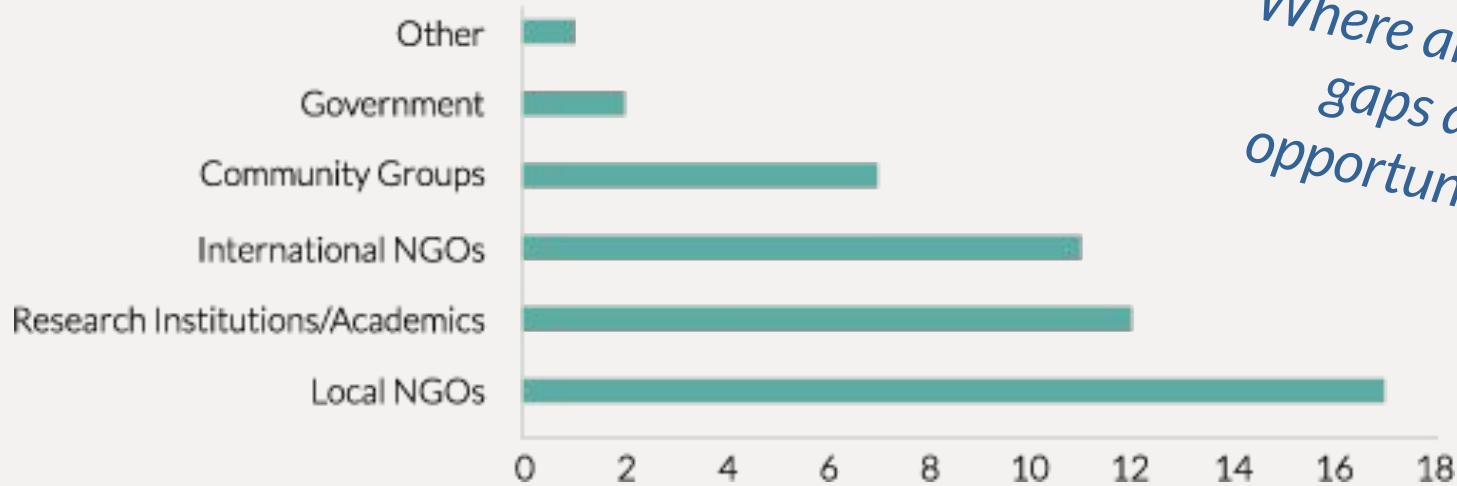


Types of Parent / Family Strengthening Activities Supported



Note participants were primarily from the early childhood development and child protection sectors. Who might we have missed?

Types of Funding Partners



*Where are there
gaps and
opportunities?*



Challenges for Investment

- Differing definitions for parent, caregiver, and family, and what constitutes supports
- Sector Siloes
- Limited Understanding of the Existing Science
- Gaps in the Existing Science
- Competing Priorities
- Separation between Private and Professional Life, Privacy for Families

Possible Areas of Collaboration



Gender transformative approaches and father engagement.

Supporting conditions for scale



Mental health of caregivers and children

Community Driven Systems Change



Measurement, Data Collection and Evidence Building

Disability



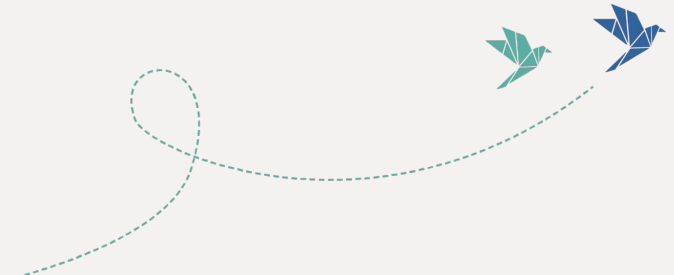
Two-generation programs

Key Insights & Questions

- *Definitions of parent, caregiver, and family vary*, as well as what constitutes support, it can also be difficult to distinguish between support to adults and direct support to children. **How can we accommodate for diverse context and ensure local agency?**
- Most respondents were seeking to influence ECD, learning, and violence outcomes, highlighting health and nutrition funders as absent from results. *Our network is skewed towards ECD and protection.* **How do we connect across sectors?**
- Investments in gender, including fatherhood programs, are on the rise, while investments in disability supports remain low, with lower prospects. **How do we center the most vulnerable?**
- COVID-19 has resulted in more investments in parent / caregiver support, with the *potential for an increase.* **How do we leverage this moment to increase support for families?**

Recommendations from the field:

- Engage multiple systems, the needs of children *and families* are multisectoral.
- Fund systems change work, including working with and influencing governments.
- Think about scale, but understand there's not one way achieve "scale"
- Invest in costing and local evidence *and* better use of existing evidence.



What's Next?

ECFG members are coming together to learn more about the parenting and family strengthening field. This mapping was the first step to get to know the ecosystem.

Together with groups like this, ECFG members hope to increase understanding and investment in this area, to amplify investments collectively.

Potential Opportunities:

- Share learnings, insights, and opportunities with and among ECFG funders and the larger ecosystem
- Develop a strategy to break down silos in parenting / family strengthening funding
- Increase understanding of parent, caregiver, and family support programs and evidence
- Build more evidence in gap areas



Thank you!



Read the full report here:

<https://elevatechildren.org/publications-parent-and-caregiver-support-mapping>

Stay in touch on ECFG's parenting efforts by reaching out to sheela:

sheela.bowler@elevatechildren.org

