

NOW LEASING

36 W FIRECLAY AVE. MURRAY, UT



Fireclay Studios

for Salon & Med Spa Professionals



Ready to Lease? [Click Here](#)

Luxury Wellness

for a life well-lived

Elevated Atmosphere

Envelop your clients in a tranquil atmosphere while also offering complimentary beverages and WiFi, as well as complimentary laundry service and 24/7 secure access for you.

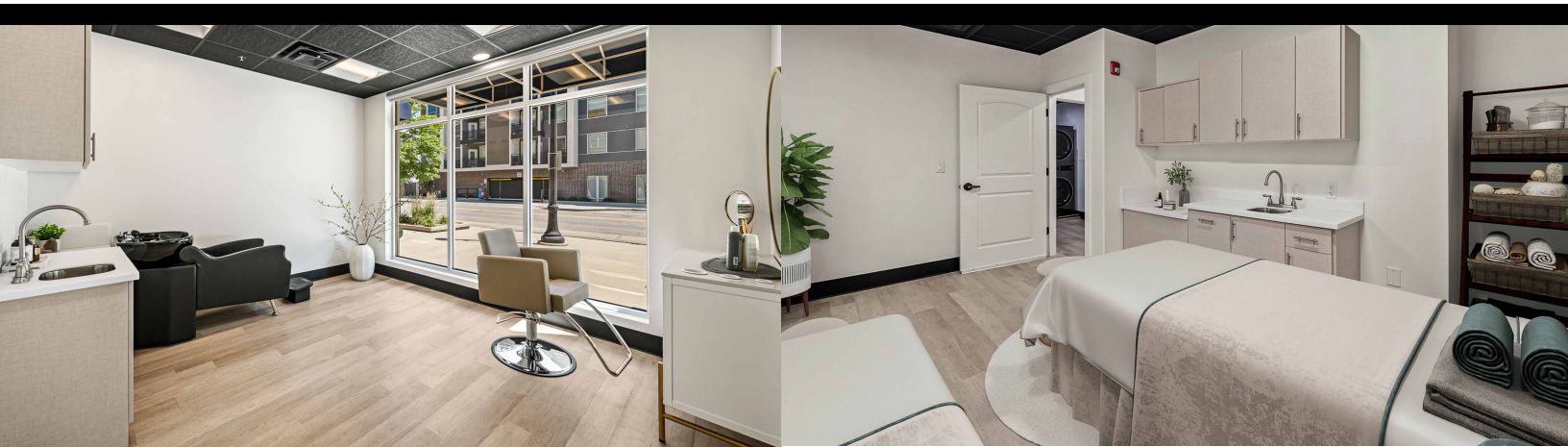
Enjoy ample parking along a highly trafficked roadway. The shared lobby and common areas feature serene seating areas, ensuring their comfort in case they arrive early for their appointment. The presence of security cameras guarantees vigilant monitoring of the luxury suites, ensuring the safety and protection of valuable equipment and assets on-site.

We only host those who have achieved the highest level of certification for their field and that have a proven track record of success.

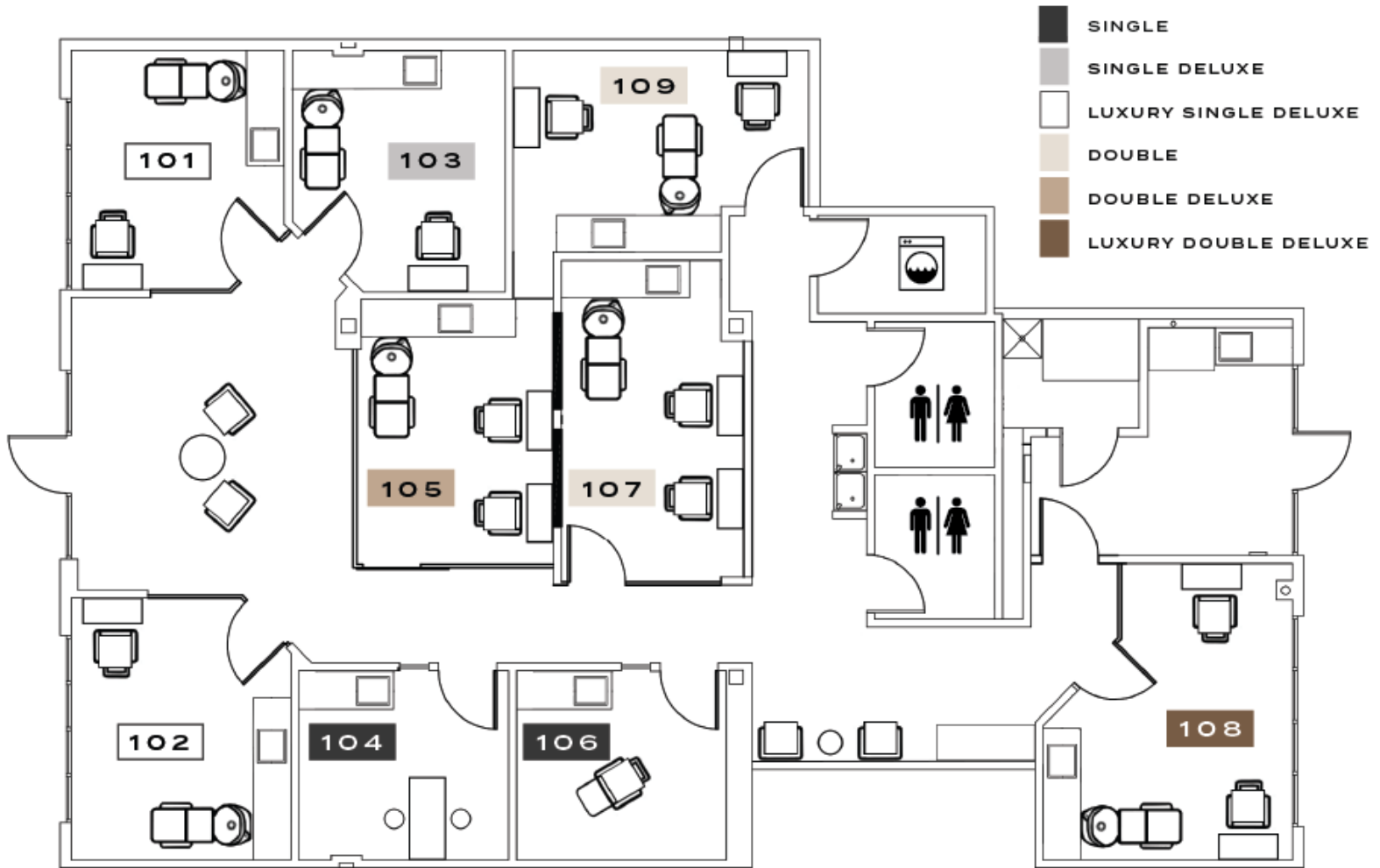
By curating a community of top-tier specialists, we strive to provide our clients with unparalleled experiences. Our stringent selection process ensures that our existing specialists can have complete confidence in the caliber of talent within our premises.

Shared Success

Amid a myriad of other professionals and their elite services, we know that this close proximity will assist in building each professional's clientele base.



Floor Plan



Single Studios

Ideal for the independent specialist who is looking for an intimate single studio that is beautifully designed and elevated beyond industry standards. This exclusive studio offers ample room for both independent specialists and their valued clients. Single studios range from 105 SF to 130 SF.

Fully equipped and fully customizable for you and your unique business. Comes with cabinet storage, and a sink.

Double Studios

Luxurious double studio presents an ideal solution for business partners in search of an expansive workspace. Independent specialists who aspire for a more spacious, that perfectly aligns with their business needs can also opt for the convenience of a double studio. Double studios range from 137 SF to 172 SF.

Tailored and equipped to meet your distinct business needs, our space offers complete customization for your convenience. Comes with cabinet storage, and a sink.

Relax & Rejuvenate

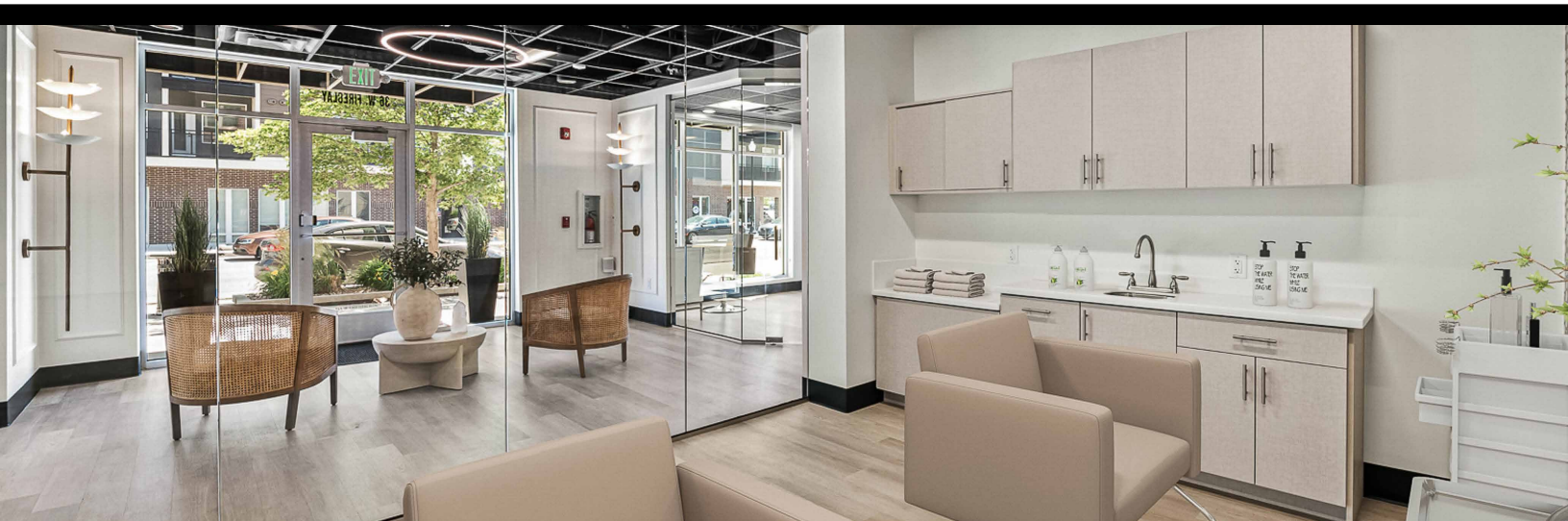


Amenities & More

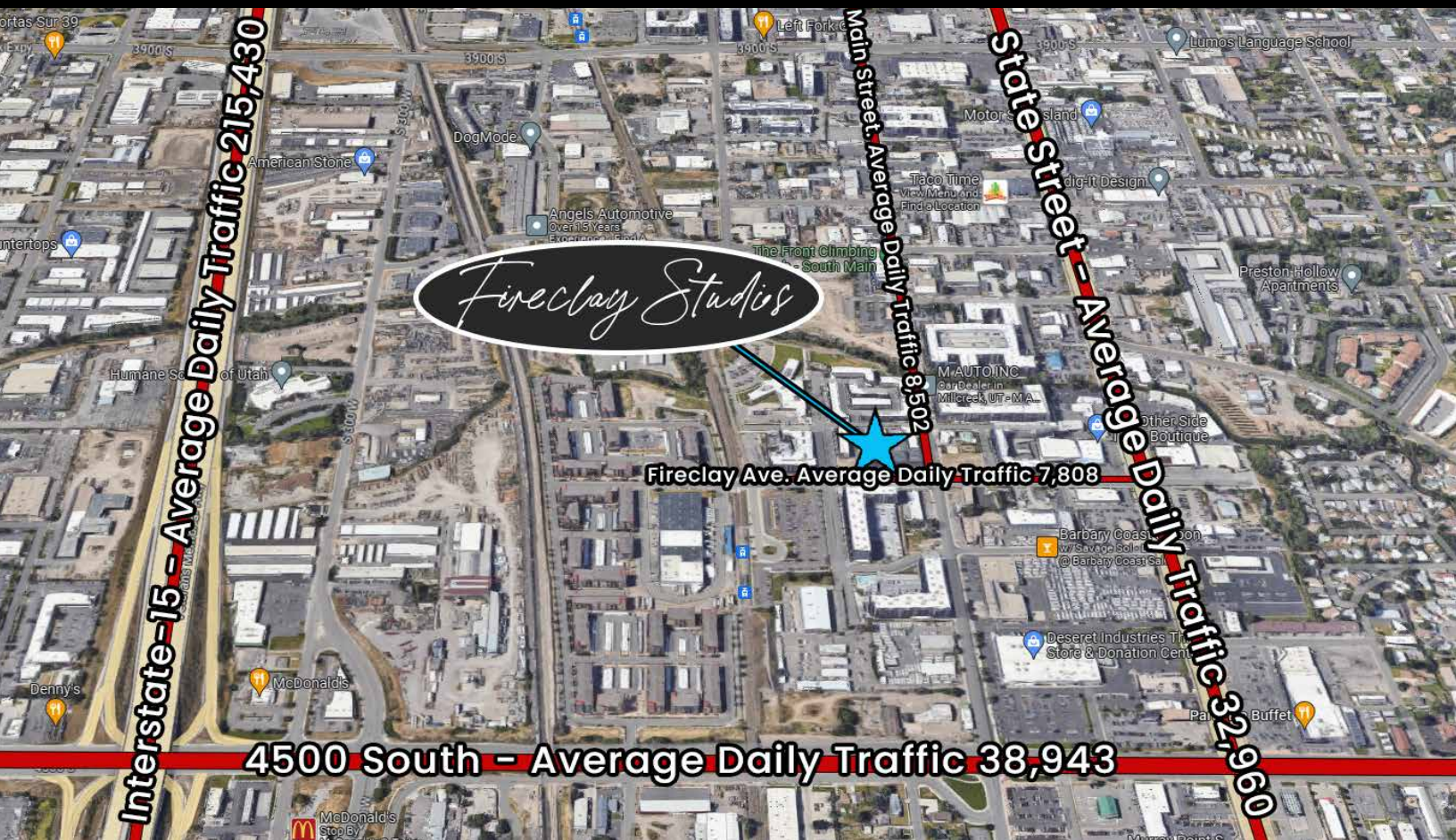
Fireclay Studios prides itself on providing exceptional amenities to enhance the experience of its tenants and their employees.

The break room at Fireclay Studios offers a welcoming and comfortable environment for employees to unwind and recharge, and boasts a range of amenities and features to cater to diverse preferences. It houses a well-stocked kitchenette equipped with modern appliances, including a refrigerator, microwave, and coffee machine. Employees can conveniently prepare and enjoy their meals, snacks, or beverages at their own pace.

In addition to the fantastic break room, Fireclay Studios provides covered parking facilities for the convenience and security of its tenants and employees.



Demographics & Area Map



	1 Mile Radius	5 Mile Radius
POPULATION	17,901	396,269
TOTAL HOUSEHOLDS	7,503	147,617
AVG HOUSEHOLD INCOME	\$66,010	\$91,204
MEDIAN HOUSEHOLD INCOME	\$51,618	\$71,276
MEDIAN AGE	34.7	36.3
TOTAL CONSUMER SPENDING	\$191.7M	\$5B

The Heart of Murray City

Fireclay Studios hosts an elevated and unparalleled spa experience for independent medspa and salon professionals as well as those individuals seeking only the best in luxury salon services.

This ideal business location is surrounded by over 2,500 multi-family units in a half-mile radius. Murray is a prime location for small businesses thanks to its diverse and stable economy, excellent transportation amenities, highly educated workforce, and cost-effective services. The city's accessibility from major highways and TRAX light rail stations makes it convenient for customers and suppliers.



Fireclay Studios

36 W FIRECLAY AVE. MURRAY, UT

KODY WATTS
TORI TARVER WATTS
801.871.8781

Fireclaystudios.com