



# Automated Shades

Solutions that put you in control of your light

# The transformative power of light

Think about how your mood changes when a drab, cloudy morning turns into a sun-kissed day, and then that bright afternoon sun softens into an evening dusk. You go from feeling lackluster to energized and then relaxed.

## The reason is light.

Light not only changes the look of the day, but also affects the way you feel. Wouldn't it be nice to adjust the amount of daylight in your home to complement your mood and even transform it?

With Lutron, you have the power to do that. The press of one button can shape the lighting in a space to create the perfect atmosphere for any activity.

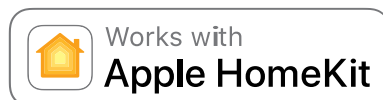
## Contents

2-3	The Lutron difference
4-9	Roller shades
10-15	Palladiom roller shades
16-17	Roller shade fabrics
18-21	Draperies track system
22-23	Horizontal sheer blinds
24-25	Wood blinds
26-29	Honeycomb shades
30-31	Kirbé vertical drapery
32-33	Roman shading system
34-35	Custom fabric programs
36-37	Control styles
38	Inspiring fabric collections



## The Lutron difference

- We have over 20 years of experience and knowledge in the automated shading industry, and we are the world leader in precision controlled automated blinds.
- We provide the entire shading solution—the shade itself, electronic drives, controls, power supplies, and hardware—ensuring the highest-quality products and a satisfying customer experience.
- We offer the widest breadth of line, with eight shade styles and over 1,500 materials and fabrics for any budget or application.
- We pay exceptional attention to detail for functional—and beautiful—controls, and offer a wide selection of styles, colors, and finishes.
- We offer seamless integration of daylight, electric light, security systems, and HVAC systems, for total home control solutions that help save energy.
- We work with best-in-class home solutions to provide ultra-reliable shade (and light) integration with your favorite brands.
- We provide global 24/7 customer support.



## ROLLER SHADES

### Roller shades

Sivoia QS roller shades complement both traditional and contemporary designs and are available in different sizes to accommodate the needs of any room. Sivoia QS shades are hard-wired solutions.

#### **Precision control**

All Lutron shades feature intelligent hembar alignment, which was designed to synchronize all automated shades in a single room, or in an entire home.

**Pocket**—recessed into the ceiling, pockets offer blackout capability for the window and a protective enclosure for the entire shade system.



**Fascia**—this decorative cover conceals the roller and is ideal for more conventional spaces as a round or a square profile.



Round



Square



## ROLLER SHADES

### Battery-powered roller shades

Battery-powered shades are cost-effective, easy to maintain, and ideal for areas that require a wire-free solution.

#### Battery basics

Triathlon battery-powered shades use regular store-bought batteries, with battery life dependent on shade size, fabric type, and the number of times the shade is opened and closed every day. That means the shade has the potential to move thousands of times on a single set of batteries.

The batteries are located within the headrail; simply tip the headrail forward to reveal the battery tray, without taking the shade down.



#### Shade sizes

Battery-powered roller shades are available in configurations up to 12' wide by 12' tall.



## Battery-powered fascia options

**Architectural**—provides a clean and contemporary aesthetic for spaces that require a modern finish.



**Fabric-wrapped**—ideal for applications with a more traditional design aesthetic, fabric-wrapped fascia provides a finished look with matching fabric.



**Exposed standard**—this slim profile can be hidden with custom top treatments.



**Exposed WIDR**—this profile can be concealed with a custom top treatment or left uncovered for an industrial aesthetic.

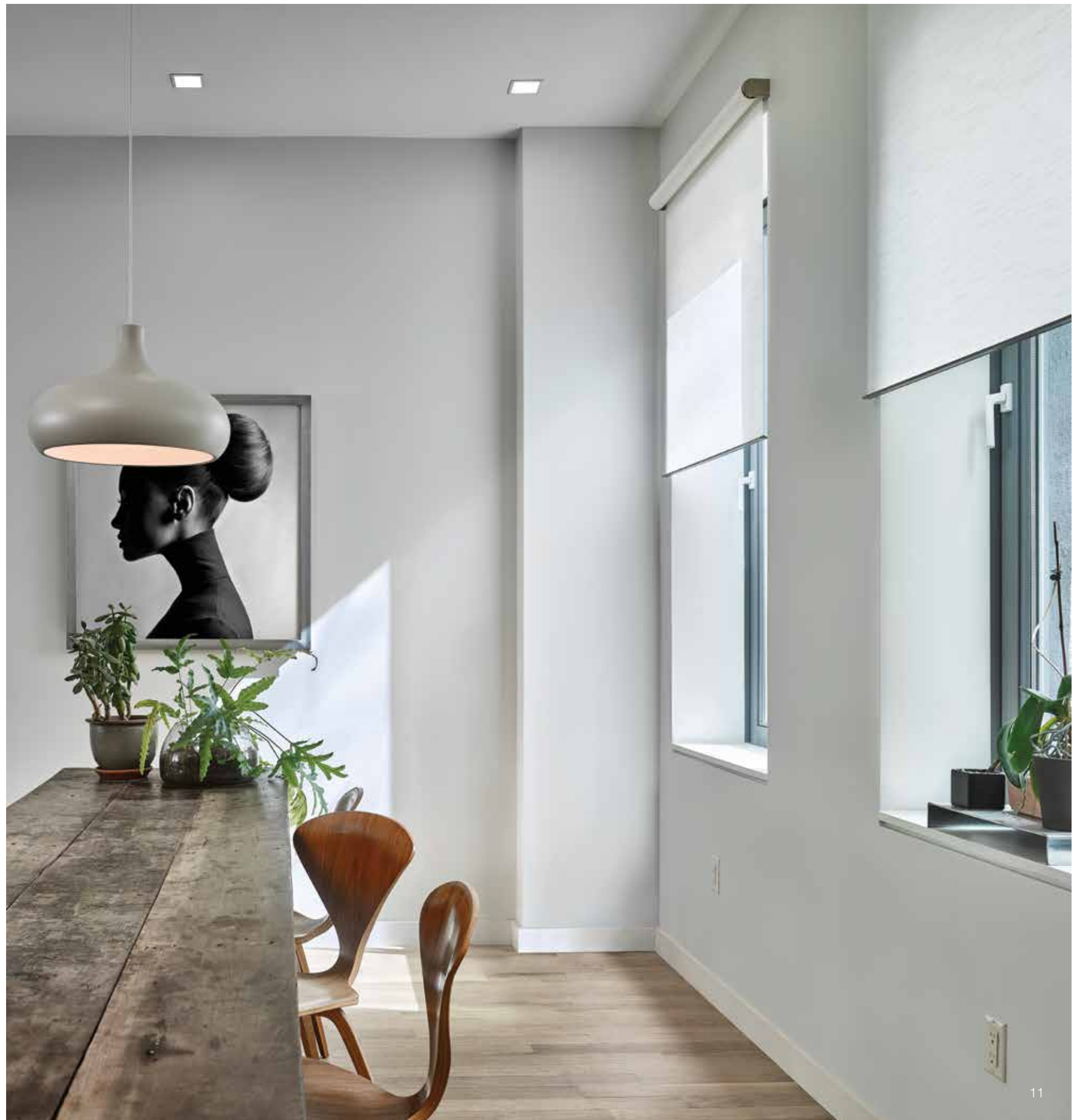


## PALLADIOM ROLLER SHADES

### Palladiom roller shades

Palladiom roller shades are in a class by themselves. Sleek and sophisticated, they feature exposed bracket hardware designed specifically to be seen. The bracket, together with the roller tube's slender profile and carefully balanced bottom rail, take this distinctly crafted automated solution to new heights.

#### Palladiom bottom rail



## Designed to fit anywhere

Palladiom seamlessly blends into any architectural style. Mount on or above the window frame to highlight the handsome end bracket or feature Palladiom jamb brackets elegantly inside the frame.

### End Bracket



### Center Bracket



### Jamb Bracket





## Coordinating Palladiom controls

Block midday glare with one touch of a Palladiom keypad, which complements Palladiom shades and temperature control for a sleek, coordinated aesthetic.

You can also add Lutron lighting control to any Lutron automated shading solution, for convenient control of lights as well as shades all from the same control station.

### Palladiom keypad



### Palladiom thermostat



## ROLLER SHADE FABRICS

### Roller fabric opacity

#### Sheer

- Open weaves preserve exterior views while protecting furnishings from U/V rays.
- Ideal for rooms where you don't need complete privacy



#### Translucent

- Tighter weaves transform harsh daylight into a soft, filtered glow
- Provides increased privacy for spaces like bathrooms



#### Room darkening

- Opaque fabrics block light from entering a space
- Ideal for bedrooms and media rooms



## Drapery track systems

Drapery track systems electronically operate pinch pleat or ripplefold curtains to elegantly provide quiet, convenient daylight control. You can use your own material for drapery tracks.

### Drapery sizes

Lutron drapery track systems provide a wide range of options to suit your needs. Our systems allow for tracks up to 30 feet long, single or multi-bend curved tracks, manual-open override, track splicing, 90° curves, and more.

### Draw styles

**Right Draw**—the drive is located on the right-hand side, and the carrier opens drapery from the left toward the right. (Drive remains hidden behind the stackback.)

**Left Draw**—the drive is located on the left-hand side, and the carrier opens drapery from the right toward the left. (Drive remains hidden behind the stack back.)

**Center Draw**—one drive uses two carriers to open the drapery from the center to the left and right simultaneously. (Drive can be located on the left or right, while remaining hidden behind the stack back.)

### Straight track

The straight track system is available in the following configurations:

- Single or dual track
- Standard single track with lengths up to 18ft, and up to 30ft spliced

### Curved Track

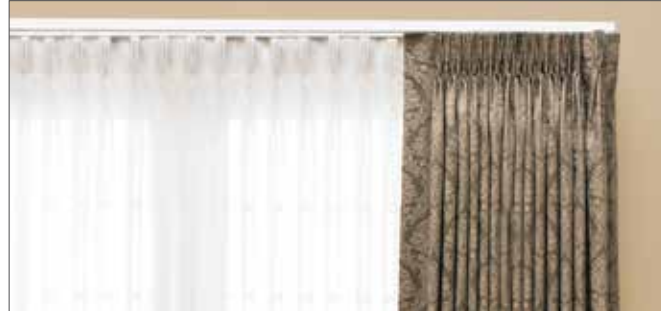
Lutron drapery track can be custom-curved to fit a curved wall, bay window, and many other special applications.

- Standard arc: 90° bend with a 20" minimum radius
- Custom arcs are also available, and can accommodate center and single draw



## Pleat styles

**Pinch Pleat**—the style is named for the pleated look created by pinched gatherings of the fabric at the top of the drapery. Pins on the back of the drapery are simply looped through the carriers on the track when installed.



**Ripplefold**—the style is named for the soft, consistent ripples created by the drapery as it hangs from the track. Fullness of the drapery is determined by the carrier spacing. Lutron ripplefold tracks are available in three fullness factors: 80%, 100% and 120%.



### Mounting options

Choose from wall or ceiling mount. Tracks can be mounted in a cove (as pictured here) or recessed into the ceiling.



## HORIZONTAL SHEER BLINDS

### Horizontal sheer blinds

Horizontal sheer blinds pair the soft elegance of a sheer with the precise control of a blind.

Fabric vanes tilt in precise increments between open and closed positions, aligning perfectly across adjacent blinds.



## WOOD BLINDS

### Wood blinds

Wood blinds are an attractive and effective way to ensure privacy while still allowing sunlight to filter into a space. Only Lutron wood blinds offer independent lift and tilt, for precision alignment of both height and angle positions between multiple blinds.

#### Preset



#### Open tilt



#### Closed



## Battery-powered honeycomb shades

Triathlon battery-powered honeycomb shades are cost-effective, easy to maintain, and ideal for areas that require a wire-free solution.

### Battery basics

Honeycomb shades come in varying opacities from sheer and translucent to room darkening, allowing you to achieve the optimal level of light control and privacy for your space. In addition, all insulated honeycomb shade fabrics have a white backing that acts as a reflector, to help keep your space cool and comfortable. With these dual-sided fabrics, you can give each room a signature look while maintaining a uniform appearance from the outside.

Like battery-powered roller shades, these shades use regular store-bought batteries, that are located within the headrail. Simply press the release buttons to top the headrail forward, revealing the battery tray, without having to take the shade down.



### Cable-guided options

Cable-guided honeycomb shades move smoothly and quietly along vertical cables that are mounted to the outside of a door or window frame. These cables prevent shades from swaying, making this solution ideal for doors or areas of heavy airflow.

