



FREE TO FLY

NEPAL CAPITAL CAMPAIGN

Help us build a new state-of-the-art centre to protect children from sex trafficking and exploitation.



Overview

Ally Global Foundation works with local partners in Nepal to provide safe housing, education and aftercare for children rescued from sex trafficking and abuse.

All of our current facilities are leased—including five safe homes providing full-time care for more than 150 children, a primary and secondary school, a social venture business, counselling offices and a vocational training centre—which lends itself to instability for our local partner.

In the last year, Ally has purchased a large piece of property in Nepal (a cost of 3.5M USD) with plans to build new safe homes and school facilities. Moving our local partners out of rented buildings and onto this new property will **drop their operational costs by almost 40%**.

The design and engineering plans for the new facilities (all executed to western standards) are now complete, and fundraising for construction has begun. In order to construct the proposed **200,000+ sq ft of new facilities**, we currently need to fundraise **10.25M USD**.

This investment into the work of our local partners in Nepal will increase their effectiveness and sustainability exponentially.

Leadership



RANDY WATSON

Ally Founder & CEO

Randy has a professional background in construction and design, as well as experience working on international development projects in 10 different countries of varying contexts. Randy is also part of the leadership team in Nepal for this building project.



TOBIAS VOKUHL

Sr. Project Manager

Tobias is a chartered construction professional with more than 25 years of experience in construction and infrastructure development. He has completed projects across Germany, the United Kingdom, Nepal and other Global South countries. He holds a first class postgraduate degree in construction project management and has a deep desire to see this project executed with excellence for the sake of the children who will live here for decades to come.



STEPHAN LUKING

Ally Board Director

Stephan has more than 35 years of construction experience managing the execution of large scale residential projects. He holds an engineering degree and is actively involved in project oversight from Canada.



BIKASH OJHA

Jr. Project Coordinator

Bikash as spent his professional career caring for children in the homes and managing administrative projects in Nepal. He has been the point person for this project between construction teams and the Nepalese stakeholders. He is an integral part of delivering the project.

** The Nepalese leadership of the safe homes and schools have been consulted at every point to ensure we are delivering the best product for the end user.*

OPERATIONAL COSTS

The cost of renting facilities makes up the majority of operating expenses for our local partner. Ownership of land and buildings will reduce operational costs by an average of 40%. (Land ownership is virtually unattainable in Nepal for those working in the social welfare sector.)

SECURITY

In some cases, the safe homes need to have increased security features to protect children from abusers who remain in close proximity. In rented facilities it is a challenge to implement the level of security needed. Owning and building our own safe homes will allow us to design custom security features that ensure safety for all children in our care.

SUSTAINABILITY

Improving all of the other factors—stability, capacity, security, design and reduced operating costs—will ensure that our local partner can keep providing the highest level of care for hundreds of children for the next 50 years and beyond.



STABILITY

Renting safe homes means that our local partner could be evicted at any time. Without warning, the 20-40 children and leaders living in a home could be forced to find a new place to live in just a few short weeks. (In fact, this has happened to one of the safe homes at least once every year.) Not only is this inconvenient, it disrupts the healing process for the children in our care. A stable, consistent environment is crucial for their restorative journey.

CAPACITY

Our team has the ability and the passion to restore more survivors of trafficking and abuse, but our facilities don't. All of our current safe homes in Nepal are running at capacity. New facilities will allow our local partner to provide a safe, loving environment for many more children.

DESIGN

It's not easy to find rented homes with floor plans that meet the needs of housing 20-40 children. Designing our own custom-built facilities will allow us to create an environment for the children that is tailored to their specific needs.

COMPLETED

PHASE 1

APPROX. 4.85 ACRES

Land Purchase
+
Design and Engineering
+
Environmental Impact Reports

3.85M USD

COMPLETED

EST. START Q2 2025

PHASE 2

APPROX. 57,460 SQ FT

Safe Homes (6)
Intensive Care Home
Guard House
+
Site Servicing
Site Retaining

2.7M USD

APPROX. COST

EST. START Q3 2026

PHASE 3

APPROX. 90,400 SQ FT

Primary School
Secondary School
Preschool
Auditorium • Cafeteria
Gymnasium • Fitness Centre
Office • Workshop
Vocational Training Centre

7.55M USD

APPROX. COST

EST. START Q3 2027

PHASE 4

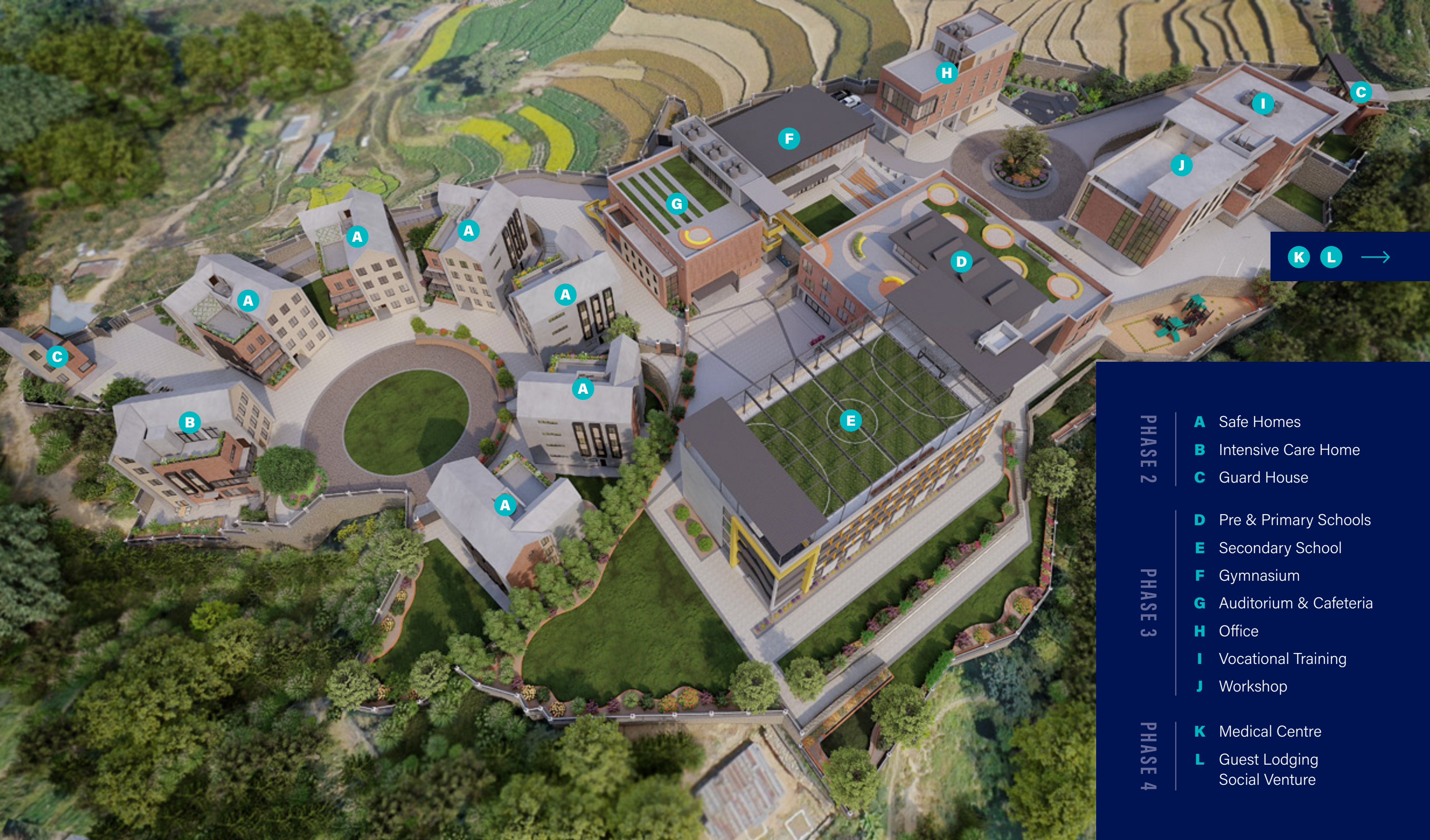
APPROX. 53,000 SQ FT

Medical Centre
Guest Lodging Social Venture

DESIGNS IN PROCESS

APPROX. COST





K L →

PHASE 2

- A** Safe Homes
- B** Intensive Care Home
- C** Guard House

PHASE 3

- D** Pre & Primary Schools
- E** Secondary School
- F** Gymnasium
- G** Auditorium & Cafeteria
- H** Office
- I** Vocational Training
- J** Workshop

PHASE 4

- K** Medical Centre
- L** Guest Lodging Social Venture





GROUND FLOOR



FLOOR 1



FLOOR 2



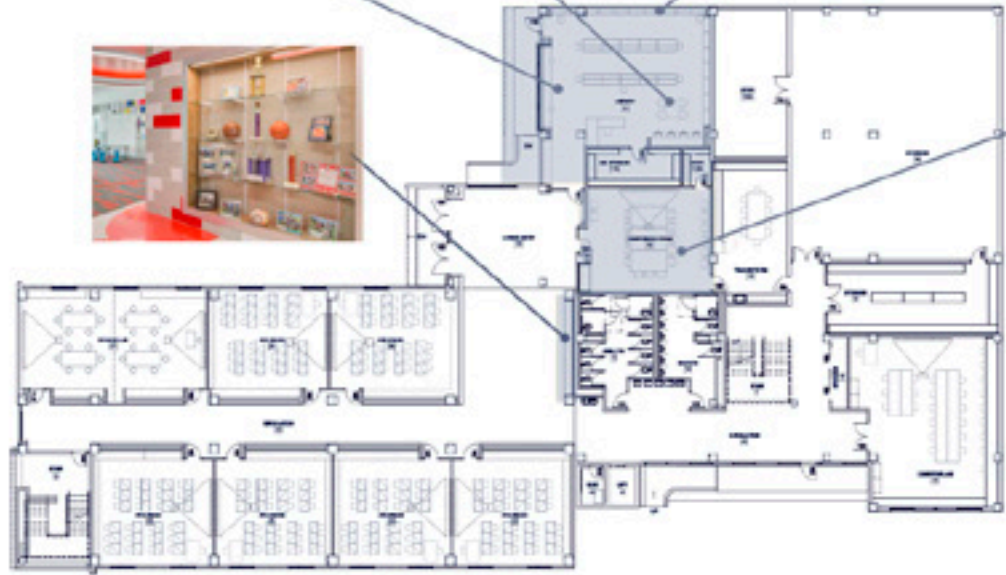
FLOOR 3



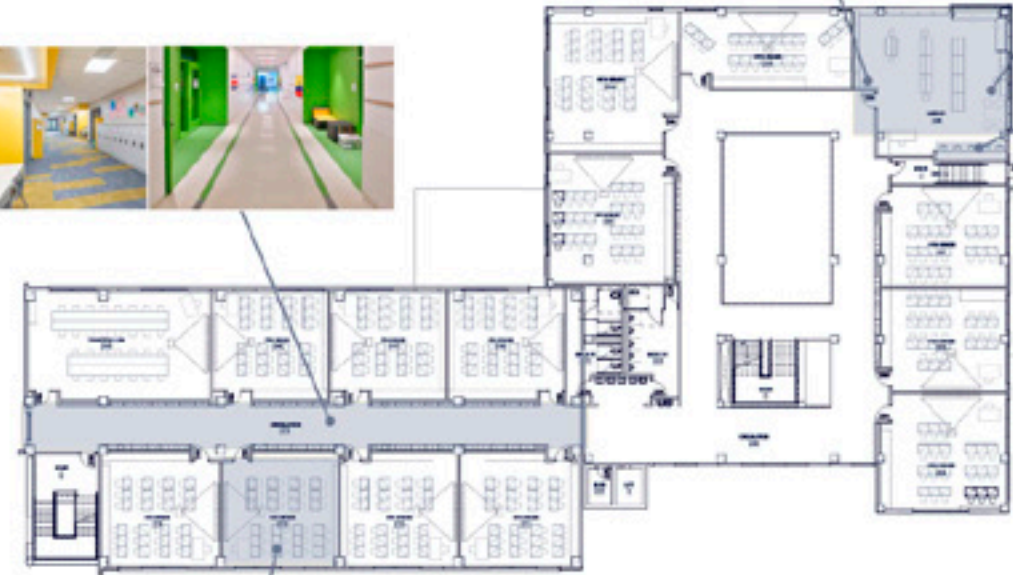








GROUND FLOOR



FLOOR 2

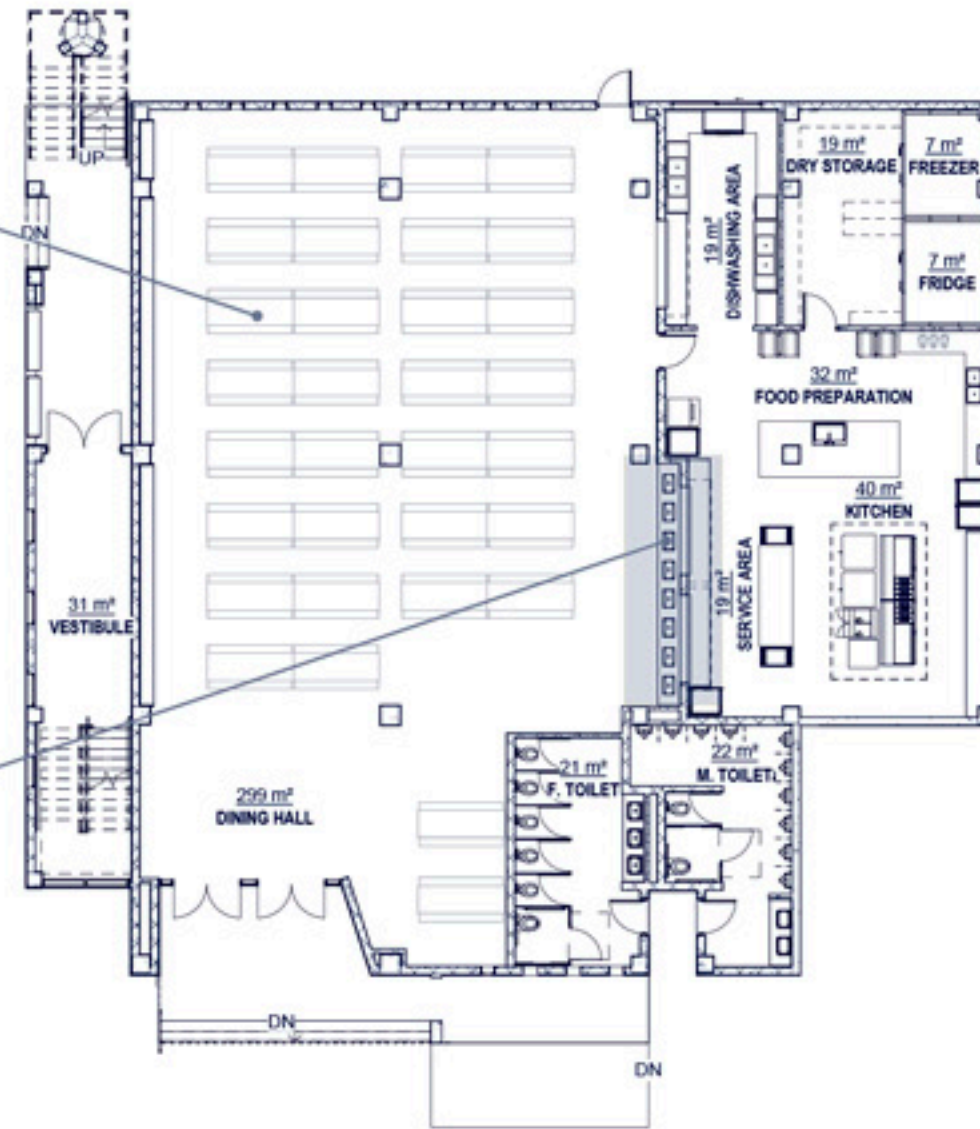


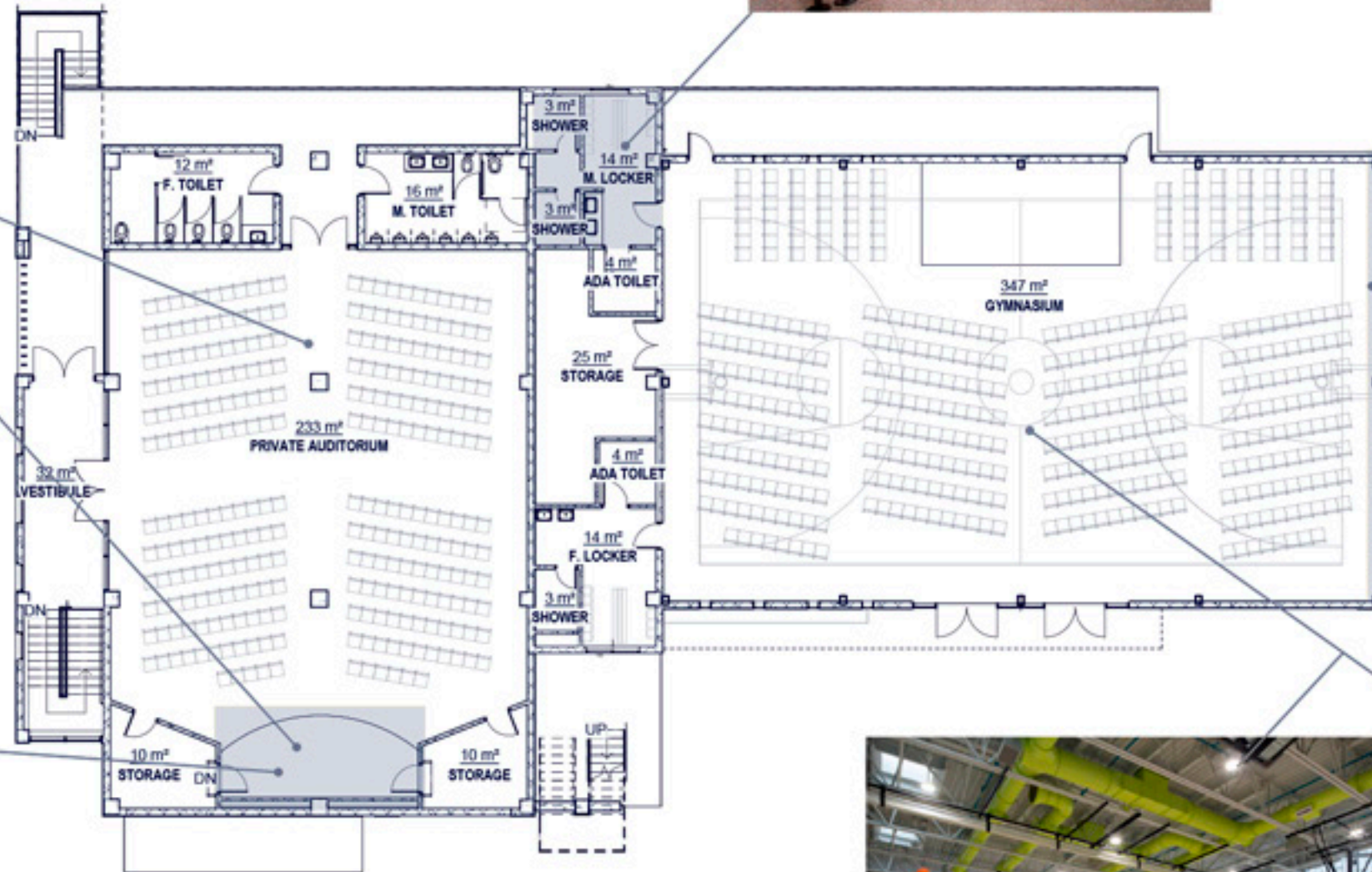
FLOOR 1



FLOOR 3

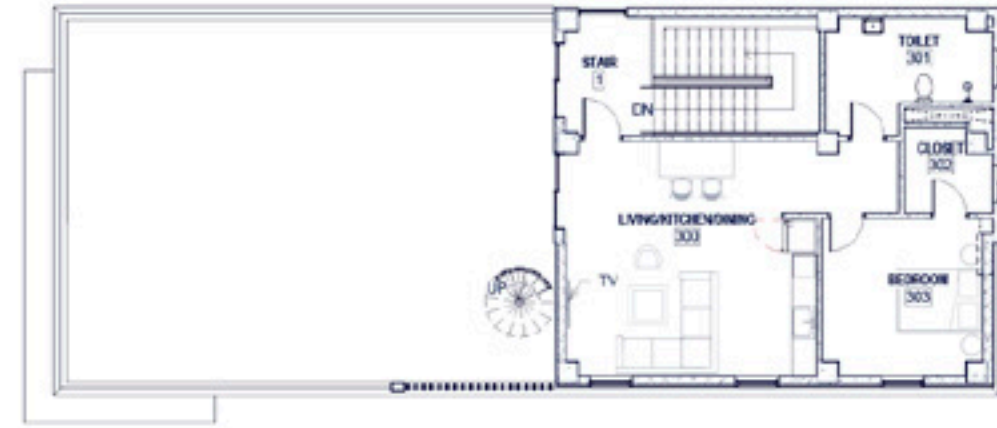




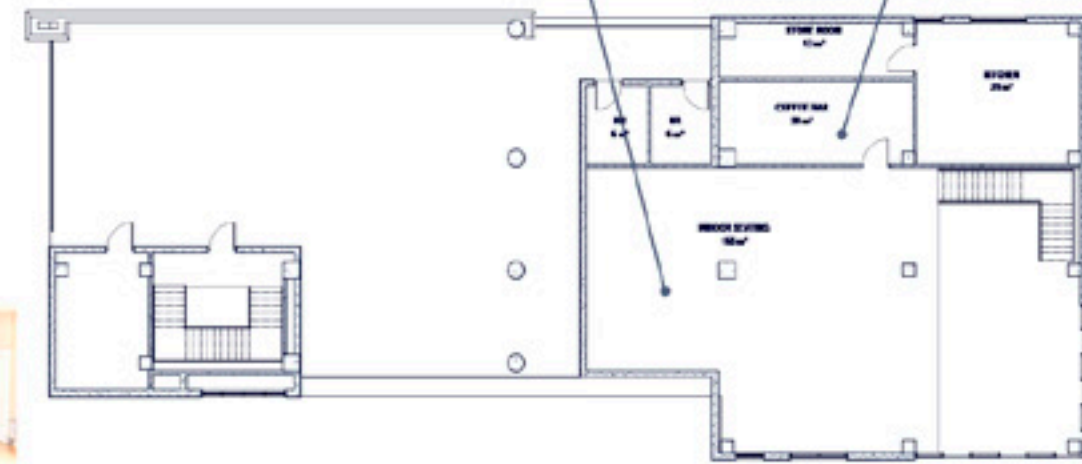
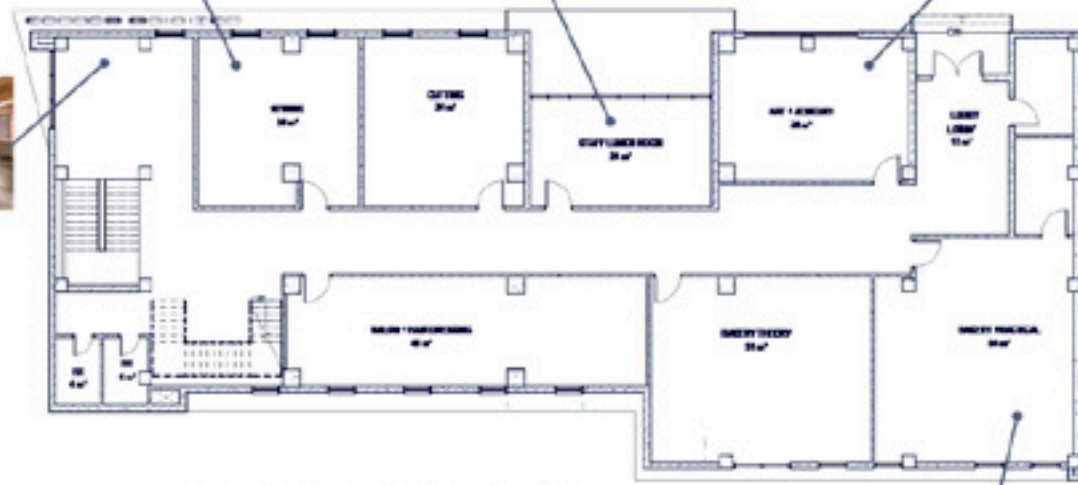












With your help, this new property will facilitate healing, education and restoration for thousands more children for decades to come—an impact that will outlast our lifetime.

For any questions regarding building design, timeline or execution, please email **tobias@ally.org**