

**"Belles"
of
Happy Valley**



December 10, 2019



PennState

Dear Friends,

On behalf of the Department of Animal Science, welcome to our Annual Online Angus Production sale. We are proud to present this genetic combination of bred heifers, pick of the heifer calves and an embryo package offered through AngusLive.com. We welcome you to view the cattle any time leading up to sale day. Bidding will close on AngusLive.com at 8pm EST on Tuesday, December 10th, 2019.

I would like to extend a special thank you to all the students who work at the Beef and Sheep Center and Haller Research Farm for their efforts in the daily care of all the livestock here. They have performed all of the sale cattle prep work. Also, I am grateful to our assistant managers Mitch Stephens and Brooke Milbrandt.

If you have any questions or would like to schedule a time to view the cattle prior to the sale don't hesitate to call. Thank you for your interest in our program.

Sincerely,

Wendall Landis

Sale Cattle Preparation: 2019 PSU Beef/Sheep Center Student Employees

Photos: Wendall Landis

Catalog: Blair Steele & Brooke Milbrandt

Video Design: Brooke Milbrandt

Postcard Design: Blair Steele

Terms and Conditions: Cattle sell under the Terms and Conditions as recommended by the American Angus Association. All bidding and payments are in US Dollars. Accepted payment forms are cash or check. All payments are to be made to Penn State University.

Herd Health: The Penn State University herd is a closed herd and is federally accredited free of Tuberculosis and Certified Brucellosis free. In addition, the herd is enrolled in the Pennsylvania Johne's program and currently at level 6 and is Leukosis free. All Sale cattle are tested BVD PI free. All cattle will be accompanied by proper health certificates for shipment.

Penn State University is retaining the right to one successful flush or 6 grade one embryos at our expense and the new owners convenience on all females in this sale.

[Online Sale Information](#)

Tuesday, December 10, 2019 Bids Close 8PM (EST)

[Bidding Style](#)

Horse Race Style closing format for this sale! When time expires, all lots are declared sold! Original ending time: 8PM EST with extending bidding to follow! Extended bidding will continue until there is no bidding for 5 minutes!



[Contacts](#)

Wendall Landis - (814) 280-7611

Mitch Stephens - (814) 762-4762

Brooke Milbrandt - (814) 558-6186

Jeremy Haag - (816) 516-1309 (Angus Live)



1

Pick of the 2019 Angus Heifers

- ◆ SELLING THE PICK OF THE 2019 ANGUS HEIFERS. PSU will retain one-half embryo interest in the selected female. Heifer must be selected by February 1, 2020.
- ◆ This is an outstanding opportunity to acquire the pick of the 2019 Angus Heifers at Penn State University. Over 35 heifer calves to choose from, both natural and ET.
- ◆ Heifers throughout this offering will be sired by 5T Power Chip 4790, Musgrave Sky High 1535, SAV Extension 6856, SAV Raindance 6848, Sitz Reload 411C, ZWT Summit 6507, GDAR Game Day 449, Connealy Thunder, SAV Renown 3439, Connealy Black Granite, and other outstanding herd sires used in the Penn State program.
- ◆ The cow families represented include Playmate, Mignonne, Pure Pride, Blacklass, Miss Enamel, Dido, Burgess, Hazel, and Prides Lass.
- ◆ If you have any other questions, please feel free to contact Wendall Landis at (814) 280-7611.



5T Power Chip 4790



Musgrave Sky High 1535



SAV Raindance 6848



ZWT Summit 6507



2

P S Barbara 301 810

DOB: 02/15/18 Cow 19257694 Tattoo: 810

Visiontopline Royal Stockman	Gambles Royal Flush
Vision Unanimous 1418	LaGrand Pride 7140
Vision Edella 665	Boyd On Target 1083
	Vision Edella 337
Connealy Thunder	Baldridge Kaboom K243 KCF
P S Barbara 110 301	Parka of Conanga 241
P S Barbara 932 110	B C Lookout 7024
	BC PS Barbara 902 932

CEB	BW	WW	YW	Milk	\$EN	Marb	RE	\$M	\$W	\$B
+5	+1.0	+61	+105	+19	-11	+40	+32	+60	+56	+102

'Pearl' as she is known around the barn is the daughter of last years lot 1 in our sale. We successfully flushed her dam and will have progeny coming this spring by Musgrave 316 Exclusive. 810 had a BWR of 90 and a WWR of 106. She excels for her EPD's in WW, YW, Doc, with both Foot EPD's in the top 1% of the breed. Powerful pedigree combining Unanimous, Thunder, and Lookout and we are excited for the combination with Charlo this Spring. Halter broke.

Bred to calve to Coleman Charlo 0256 on 2/24/20



3

P S Playmate 459 842

DOB: 03/04/18 Cow 19352199 Tattoo: 842

Silveiras Conversion 8064

BT Crossover 758N

SAC Conversation

EXG Saras Dream S609 R3

Lafins Farrah 0252

S A V 004 Predominant 4438

BC PS Paxton 385 157

Lafins Farrah 7215

O C C Paxton 730P

P S Playmate 135 459

B C Mignonne's Libby 385

P S Playmate 736 135

BC Eagle Eye 110-7

P S Playmate 024 736

CED	BW	WW	YW	Milk	\$EN	Marb	RE	\$M	\$W	\$B
+4	+1	+55	+90	+24	+11	+52	+55	+77	+68	+87

Here is one that catches your eye, sired by Conversation, that charts in the top 15% of the breed for \$EN, \$M, and \$W. She is explosive in her rib and good in her angles while blending nicely into her front one third. She possess skeletal width and is square and level designed. This Playmate had a WWR of 103 and a REA ratio of 102. Her mating to our herd sire 813 will add Power Chip, Brilliance, and Matrix to the mix. Halter broke.

Bred to calve to Connealy Thunder on 2/25/20

Exposed to P S Power Chip 349 813 from 7/9/19 - 7/23/19



4

P S Playmate 952 815

DOB: 02/18/18 Cow 19257685 Tattoo: 815

EF Commando 1366

EF Complement 8088

Baldrige Bronc

Riverbend Young Lucy W1470

Baldrige Isabel Y69

Styles Upgrade J59

Baldrige Isabel T935

Duff Encore 702

D H D Traveler 6807

P S Playmate 417 952

O C C Dixie Erica 814G

P S Playmate 208 417

Bon View New Design 878

P S Playmate 024 208

CED	BW	WW	YW	Milk	\$EN	Marb	RE	\$M	\$W	\$B
+9	+5	+54	+95	+26	-5	+0.43	+0.38	+60	+59	+98

A Bronc daughter out of a dam that has a calving interval of 367 days on 9 head and will turn 11 this spring. She combines a balanced set of EPD's with a phenotype quality. Her 3-dimensional rib shape and natural thickness make her an attractive and versatile female. She posted a weaning WWR of 104 out of 28 head and a REA ratio of 105. Mating her to Coleman Playmaker only added to the maternal prowess in this female. Halter broke.

Bred to calve to Coleman Playmaker 427 on 2/25/20



5

P S Playmate 184 838

DOB: 02/25/18 Cow 19257687 Tattoo: 838

Connealy Thunder	Baldrige Kaboom K243 KCF
CTS Remedy 1T01	Parka of Conanga 241
CTS 7V03 Bellemere Maid 9T02	L T 598 Bando 9074
	SVA Rita 7V03 of 1407 502
Duff New Edition 6108	O C C Genesis 872G
P S Playmate 714 184	O C C Dixie Erica 814G
P S Playmate 402 714	Boyd Beef Maker 3069
	P S Playmate 215 402

CED	BW	WW	YW	Milk	\$EN	Marb	RE	\$M	\$W	\$B
-1	+1.9	+56	+103	+24	-7	+39	+48	+62	+53	+136

A high performing Remedy daughter from the Playmate family whose dam is a coming 9 year old. 838 posted a WWR of 105 and a REA ratio of 106. She also ranks in the top 1% for both foot EPD's, top 25% for RADG and CW, and top 35% for YW and \$B. Her mating to our 813 herd sire will be a good one blending not only Power Chip but the Mignonne and the Playmate families for built in longevity. Halter broke.

Exposed to P S Black Sky 541 859 from 6/3/19 - 7/9/19
Exposed to P S Power Chip 349 813 from 7/9/19 - 7/23/19



6

P S Pure Pride 653 806

DOB: 02/12/18 Cow 19257710 Tattoo: 806

Koupals B&B Identity	Sitz Upward 307R
Musgrave Aviator	B&B Erica 605
MCATL Forever Lady 1429-138	S A V Final Answer 0035
	ALC Forever Lady R025
BC Lookout Emblazon 221-8	B C Lookout 7024
P S Pure Pride 360 653	B C E Belles Ember 221
P S Pure Pride 422 360	Boyd Resume 9008
	BC 110 Pure Pride's MR B 422

CED	BW	WW	YW	Milk	\$EN	Marb	RE	\$M	\$W	\$B
+6	+1	+48	+88	+27	-11	+43	+54	+52	+52	+120

A balanced and complete Pure Pride bred heifer combining Aviator, Lookout, and Resume. Breed leading EPD's in BW, RADG, DMI, Milk, and both Foot EPD's. She is clean fronted and has added rib shape and dimension. Her mating to Capitalist 316 should make for a powerful calf. Halter broke.

Bred to calve to LD Capitalist 316 on 2/24/20



7

P S Pure Pride 235 827

DOB: 02/22/18 Cow 19257690 Tattoo: 827

Rito 707 of Ideal 3407 7075

R R Rito 707

S A V Resource 1441

Ideal 3407 of 1418 076

S A V Blackcap May 4136

S A V 8180 Traveler 004

S A V May 2397

P S New Look 042 862

DCC New Look 101

P S Pure Pride 896 235

P S Playmate 207 042

BC PS Pure Pride 463 896

BC 7022 Raven 7965

B C Pure Pride 633 413 463

CED	BW	WW	YW	Milk	\$EN	Marb	RE	\$M	\$W	\$B
-2	+5.0	+61	+113	+15	-19	+0.05	+0.67	+28	+34	+114

Performance and power best describe this Resource daughter. Backed by the Pure Pride and Playmate cow families she ratioed 107 at weaning out of 28 contemporaries. She charts in the top 35% or better for WW, YW, RADG, Foot Angle, CW, RE, and \$F. Her expected calf to Capitalist 316 will be a high quality combination of genotype and phenotype. Halter broke.

Bred to calve to LD Capitalist 316 on 3/11/20



8

P S Dido 652 805

DOB: 02/12/18 Cow 19257716 Tattoo: 805

Connealy Thunder	Baldrige Kaboom K243 KCF
CTS Remedy 1T01	Parka of Conanga 241
CTS 7V03 Bellemere Maid 9T02	L T 598 Bando 9074
	SVA Rita 7V03 of 1407 502
P S Honest Answer 743 442	S A V Final Answer 0035
P S Dido 422 652	BC PS Pure Pride 223 743
P S Dido 154 422	BC Eagle Eye 110-7
	BC PS Dido's Matrix 439 154

CEW	BW	WW	YW	Milk	\$EN	Marb	RE	\$M	\$W	\$B
+3	+4	+57	+104	+25	-5	+18	+62	+64	+59	+109

Maternal power built in on this Remedy daughter from the Dido family. A massive middle with skeletal width throughout. Her Granddam was the high selling bred cow in last years sale. Her Great Granddam is a 9 year old Pathfinder cow who continues to shine for us, posting a WWR of 107 on 7 progeny. Top 35% of the breed or better for BW, YW, RADG, Doc., Claw, and \$W. Halter broke.

Exposed to P S Black Sky 541 859 from 6/3/19 - 7/9/19
Exposed to P S Power Chip 349 813 from 7/9/19 - 7/23/19

9

Mignonne Embryos

3 Conventional Embryos

Silveiras Watchout 0514

Sma Watchout 482

2K Beauty 961

Conley Express 7211

18941522

Silveiras Style 9303

DPL Sandy 3040

K N C Cabin Creek Sandy 804

O C C Focus 813F

O C C Paxton 730P

O C C Blackbird 736K

P S Mignonne 889 216

17412239

B C Matrix 4132

BC PS Libby's Pride 385 889

B C Mignonne's Libby 385



Conley Express 7211

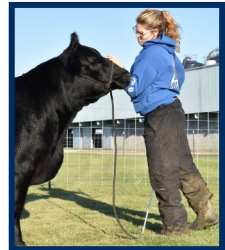
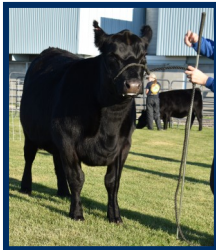


P S Mignonne 889 216

	CED	BW	WW	YW	Milk	\$EN	Marb	RE	\$M	\$W	\$B
S	-4	+3.8	+61	+101	+17	-31	+67	+07	+7	+42	+126
D	+7	+8	+44	+73	+20	+10	-.05	+32	+54	+47	+47

This embryo package combines the highly sought after genetics of Conley Express 7211 and P S Mignonne 889 216. 216 is a pathfinder cow who maintains a calving interval of 366 days on 6 head. She records a WWR 6@105 and REA ratio of 4@113 and scores in the top 1% of the breed for both foot EPD's and the top 25% for \$EN. Her dam was a long time foundation donor for us bred by Conley Angus.

Fun Times at the Photo Lot



2019 Farm Crew



Follow us on Facebook
Penn State Beef and Sheep



Scan me