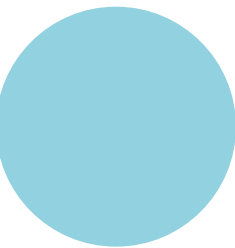


COLOUR INSTINCT



When it comes to choosing colour, go with that little voice inside that breaks into song when you see a shade you love. We've picked charming hues inspired by expertly designed spaces. One just might capture your heart.



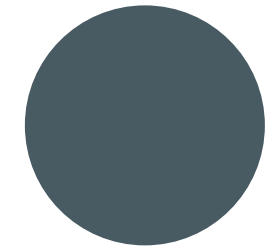
Spa Day

CSP-635, Benjamin Moore, benjaminmoore.ca

Designer Sarah St. Amand's client wanted to wake up her breakfast room with bright colour. This happy aqua shade brings to mind cool, shimmering swimming pools on a hot summer day. It serves as a lighthearted backdrop for a colourful collection of fabrics and artwork.

DESIGN, Sarah St. Amand, Sarah St. Amand Interior Design, stamanddesign.com.

PHOTOGRAPHY: KELLY HORKOFF



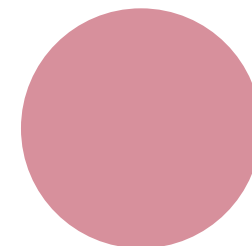
Newburg Green

HC-158, Benjamin Moore, benjaminmoore.ca

To elevate this mudroom from humdrum to home run, designer Lisa Kooistra chose a moody teal tone that complements the grey tiles and black window frame beautifully. Upholstery in grey and a bevy of blue cushions pull the palette together.

DESIGN, Lisa Kooistra, Lisa Kooistra Designs, lkdesigns.ca.

PHOTOGRAPHY: STEPHAN BUCHMAN



It's a Girl

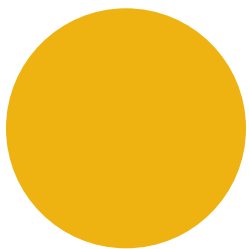
P130-4, Behr, behr.ca

We hear it all the time: dare to go big on style in the powder room. The Novogratz (husband and wife duo Robert and Cortney) aren't exactly wallflowers in their approach to design, and this pink paradise proves it. This garden of delights puts the petals to the metal: note the mix of wild pattern and colours with the classic pedestal sink that's dressed up with a burnished gold faucet and detailing.

DESIGN, Robert and Cortney Novogratz, The Novogratz, thenovogratz.com. New Flora **WALLPAPER,** Gucci, gucci.com.

PHOTOGRAPHY: WILLIAM WALDRON



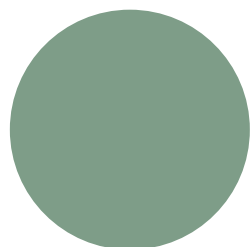


Sunflower

2019-30, Benjamin Moore, benjaminmoore.ca

Another space by The Novogratz dazzles in Robert and Cortney's typically dramatic style. The imposing fireplace burns bright day or night in a sunny shade of yellow that sits comfortably with a rainbow of upholstered pieces. The feathery light fixtures bring dimension to the lofty ceiling heights in this fun but sophisticated room.

DESIGN, Robert and Cortney Novogratz, The Novogratz, thenovogratz.com. **MANTEL**, Olde Good Things, ogtstore.com. **PENDANTS**, Heike Buchfelder, pluma-cubic.com. **Blue CHAIR**, Tokujin Yoshioka, tokujin.com.

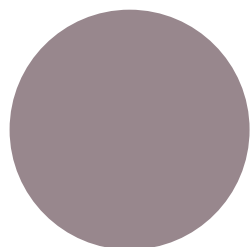


Lehigh Green

HC-131, Benjamin Moore, benjaminmoore.ca

The Novogratz had the handsome millwork built by a cabinetmaker in Los Angeles and then drove it back to New York City, where its stunning green paint ensures it's the centre of attention. A vintage 1960s Italian chandelier lights up the scene.

DESIGN, Robert and Cortney Novogratz, The Novogratz, thenovogratz.com.

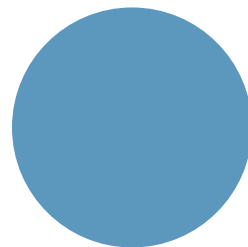
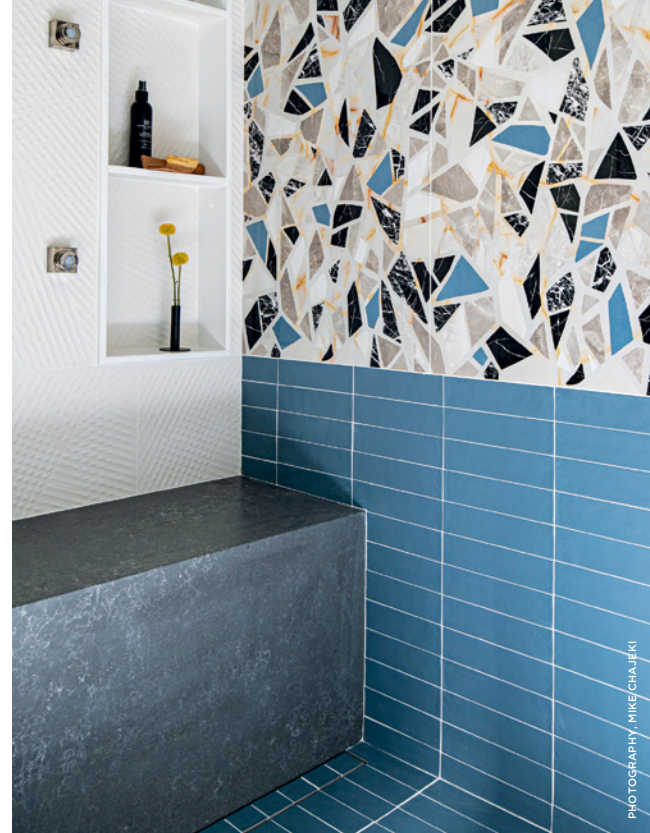


Coquina

SW 9158, Sherwin-Williams, sherwin-williams.com

Designer Michelle Berwick and her team had fun designing this child's bedroom. Upbeat colours create a happy and positive mood, and the design brings pattern to the forefront, almost like an abstract artwork. The dusky purple is paired with Granite Peak SW 6250, Leisure Blue SW 6515 and Mellow Coral SW 6324, all from Sherwin-Williams.

DESIGN, Michelle Berwick, Michelle Berwick Design, michelleberwickdesign.com.

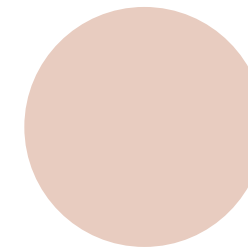


TotalBrick Tile in Blue Avio

Blu Avio Matte, Stone Tile, stone-tile.com

Paint isn't the only way to bring colour to the wall! These shower tiles were the jumping-off point for the palette in this colourful bathroom. What a splash!

DESIGN, Michelle Berwick, Michelle Berwick Design, michelleberwickdesign.com. **Stucco Blanco Axiom TILE**; Valentino Marble Majestic Mix Art **TILE**; Cercantile, cercantile.com.



Romance

SW 6323, Sherwin-Williams, sherwin-williams.com

The lucky little girl whose bedroom this is fell for this stunning wallpaper, with its pink marbling effect. The colours are vibrant, but beside the soft blush of the upholstered bed and the white furnishings, its pattern doesn't overwhelm.

Nuance **WALLPAPER**, Emilie Cerretti, emiliecerretti.com. Rowan Valley Arden **DAYBED**, Little Seeds. **SIDE TABLE, LAMP**, HomeSense.

