

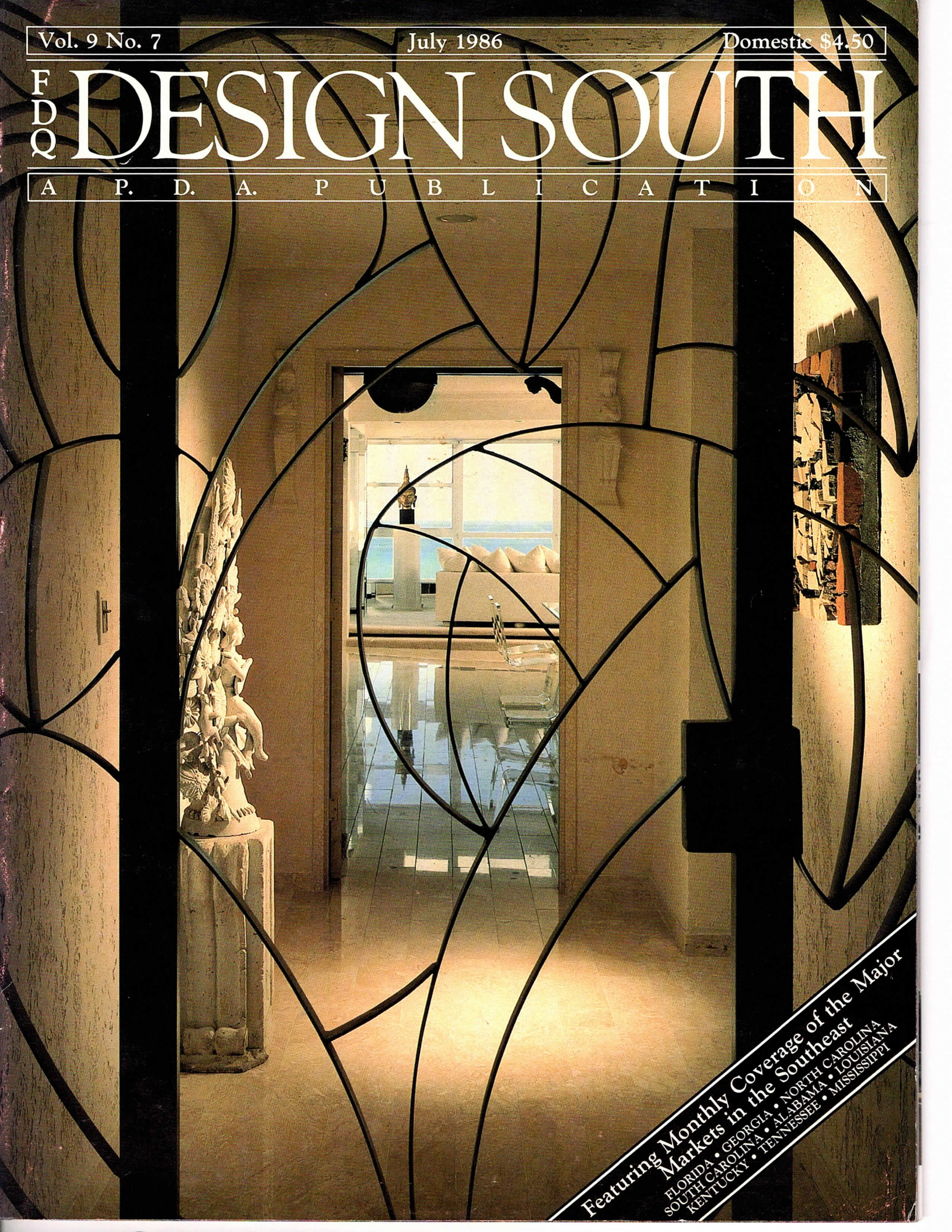
Vol. 9 No. 7

July 1986

Domestic \$4.50

# F D Q DESIGN SOUTH

A P. D. A. P U B L I C A T I O N



Featuring Monthly Coverage of the Major  
Markets in the Southeast  
FLORIDA • GEORGIA • NORTH CAROLINA  
SOUTH CAROLINA • ALABAMA • LOUISIANA  
KENTUCKY • TENNESSEE • MISSISSIPPI



# MOODY ASSOCIATES, INC. NATIONAL BANK OF COMMERCE BUILDING

## P R O G R A M

Four landmark commercial structures distinguish a singular Birmingham intersection, each a noteworthy example of turn-of-the-century architecture that coincides with that city's impressive industrial growth. Their composite historical significance was recently confirmed, when the National Park Service designated this celebrated crossroad, *in toto*, as "the Heaviest Corner on Earth Historic District."





To accommodate the National Bank of Commerce, which became the prime tenant of one 10-story 1902 "skyscraper," a 2-floor, 30,000 square-foot rearward extension was erected. Its first-class banking lobby would be transformed from a half-century-old drug store and the new ground-level addition. Well-appointed executive facilities were to be created as well, in keeping with the firm's prestigious status.

Complying with the Department of Interior's *Standard for Rehabilitation* was

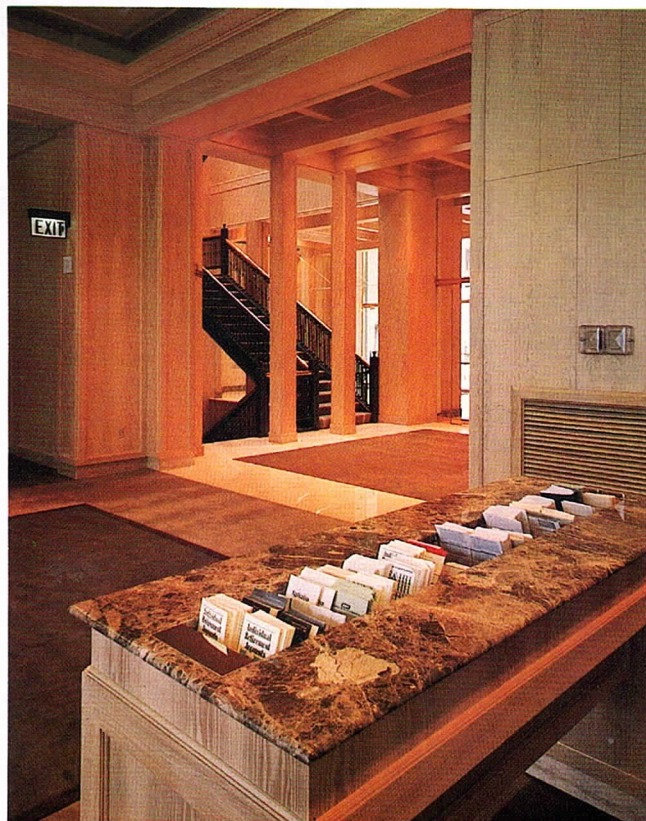
necessarily, an exhaustive undertaking. Fortunately, a comprehensive interior design firm—Moody & Associates—possessed the facilities, talent and experience to carry out this ambitious program.

## S O L U T I O N

Preserving the existing cast iron stair in a free-standing encasement, the Moody design team reproduced its balusters and incorporated them in an equally dramatic

counterpart conceived to wed the original structure with its latter-day appendage. Brass-finished to complement the bank's new vestibule, this grand lobby staircase acts as both a decorative and functional connecting element.

None of the original light oak woodwork survived previous remodelings, so a more durable cypress was selected to replicate its time-honored aesthetics. The skills of many local artisans contributed to this dramatic undertaking. The ceiling coffers, for example, alone represent a combina-



Photos: Joseph Veras



# MOODY ASSOCIATES, INC.

tion of 36 separate sections to compose a single panel.

Along with such premium treatments as imported Italian marble and custom-designed carpets, this luxurious lobby interior is thus differentiated from that of any competitor. Here, too, the extensive light cypress millwork boldly contrasts with the traditional, transitional and contemporary furnishings finished in a more customary dark mahogany.

The bank's unique cypress teller stations were designed by the Moody team to contain the lobby's heating, cooling and lighting mechanicals. Not only do these function well, but their ingenious placement maintains the historic drama of the ground floor's original 14-foot ceilings.

Executive offices reflect the prominence of this financial firm's officials, as do assorted stately conference rooms, reception lounges and entertainment facilities. A projector area concealed within a column services the auditorium/lecture hall available for either internal or community use. Expansive dining spaces have been composed as well, both a tailored "VIP" setting and a functional, yet attractive preserve for bank employees.

Such an illustrious financial institution wears its architectural mantle well, a tribute to its preservation-minded design team.

—AA

## C R E D I T S

Interior design: Moody & Associates, Inc.,  
with design team composed of J.  
Robert Moody, ASID; DeWayne  
Mobley, AIA; and Sigrid Pribbenow  
Interiors contractor: Moody & Associates,  
Inc.

Architects for the building addition: Kidd/  
Plosser/Sprague, Architects

General contractors: Doster Construction  
Company

## S O U R C E S

Banking furniture: Baker Furniture;  
Benedetti Corp.; Brickel Associates,  
Inc.; Hardwood House Inc.; Kittinger  
Co.; Metropolitan Furniture Corp.;  
Wood & Hogan Inc.

Dining/lounge furniture: Brickel  
Associates, Inc.; Cartwright; Kittinger  
Co.; Metropolitan Furniture Corp.;  
Trouvailles Inc.; Wood & Hogan Inc.

Custom millwork and architectural trim:  
Majestic Fixtures

Floorcoverings: J&J Industries, Inc.,  
installed by Acton Carpet Service; with  
custom rugs by Edward Fields

Draperies: Fabric by Jack Lenor Larsen,  
Inc., and Maharam Fabric Corp.,  
installed by Benton Brothers

