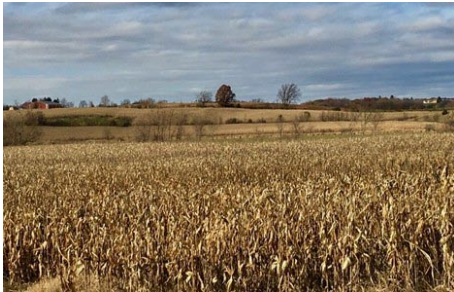


Monis Farms



Project Description: Monis Farms has been stewarded by the family for more than 175 years; the land was purchased by George Monis' great-grandfather in 1876. Situated within the Ashippun River watershed, a tributary of the River flows through the property's unique terrain. The wetland and floodplain portions of the site have expanded within the past several decades due to natural damming activities by beavers, increasing the available habitat for other wildlife species. A woodland area and conifer plantation in which active woodland management occurs are also located within this scenic landscape.

Why: The Monis Family sold their development rights to:

- 1.) Permanently preserve local farmland against rapidly increasing development pressure.
- 2.) Protect the family's agricultural legacy while securing opportunities for future farmers.
- 3.) Promote water quality within the Ashippun River watershed through the utilization of conservation practices that include cover crops and no-till corn and soybean farming.

Where: Town of Ashippun, Dodge County **Size:** Approximately 200-acres

Owners: George and Elaine Monis and their children – Peder, Karl, Kim, and Jill

Easement Holder: Tall Pines Conservancy, funded in part by the Wisconsin Farmland Protection Partnership (supported by USDA NRCS's Regional Conservation Partnership Program)

"I trust, and am filled with hope, that other generations will have the opportunity to fall in love with [the land] too ... What a legacy, what a gift!"

—Kim

