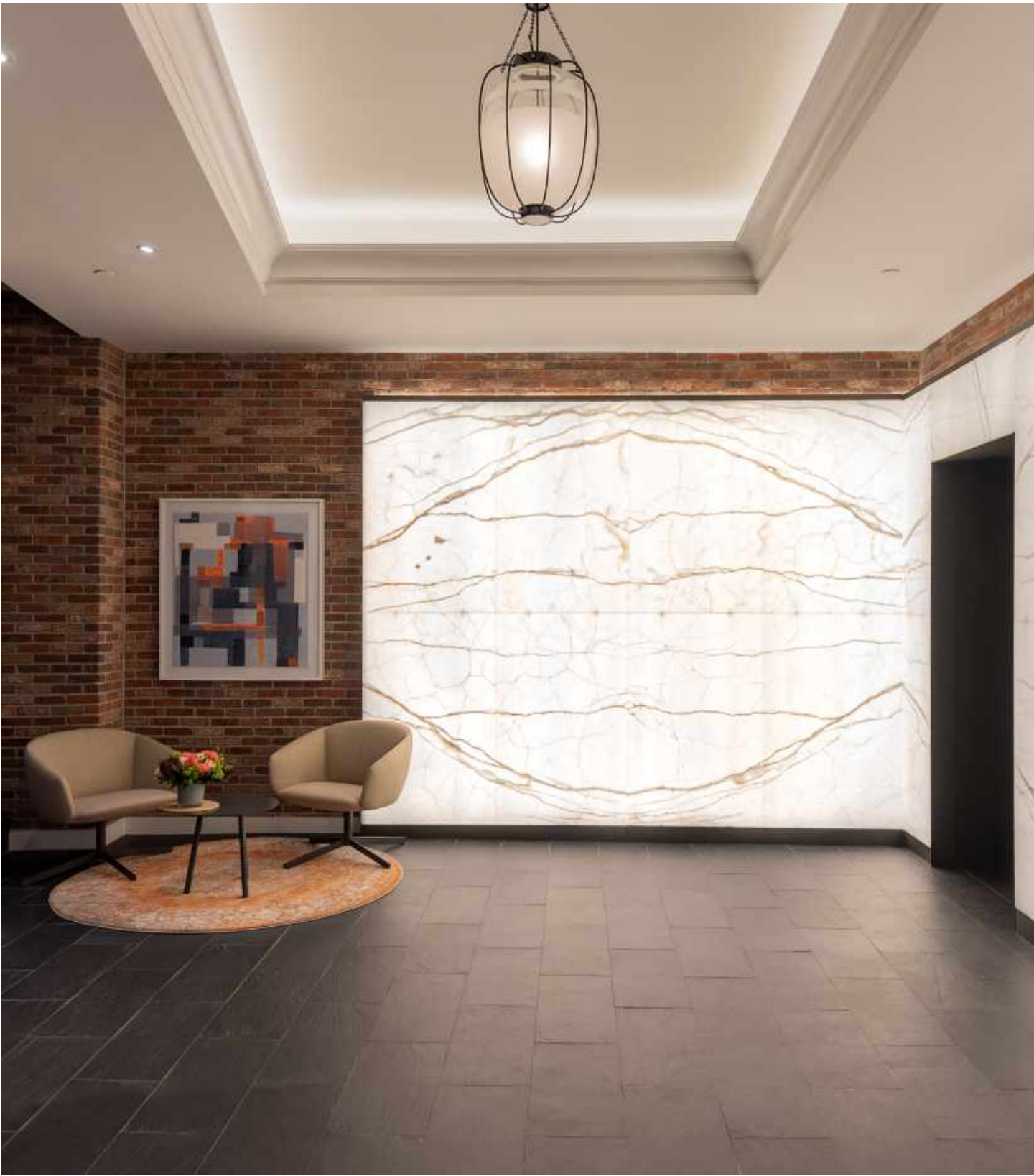


BOUTIQUE COMMERCIAL

DOWNTOWN BOSTON OFFICES
PROJECT LOOKBOOK







INTRODUCTION

Lazare Builders was hired to bring to life the Developer’s vision for a charming and beautifully preserved yet fully updated boutique downtown office building. The project included many design-build aspects during which Lazare Builders worked directly with the client to maximize the leasable square footage and functionality of the spaces. Lazare Builders provided a level of quality and care in construction typically reserved for a custom home in an effort to make the office more than a place to work but a place to live and enjoy.

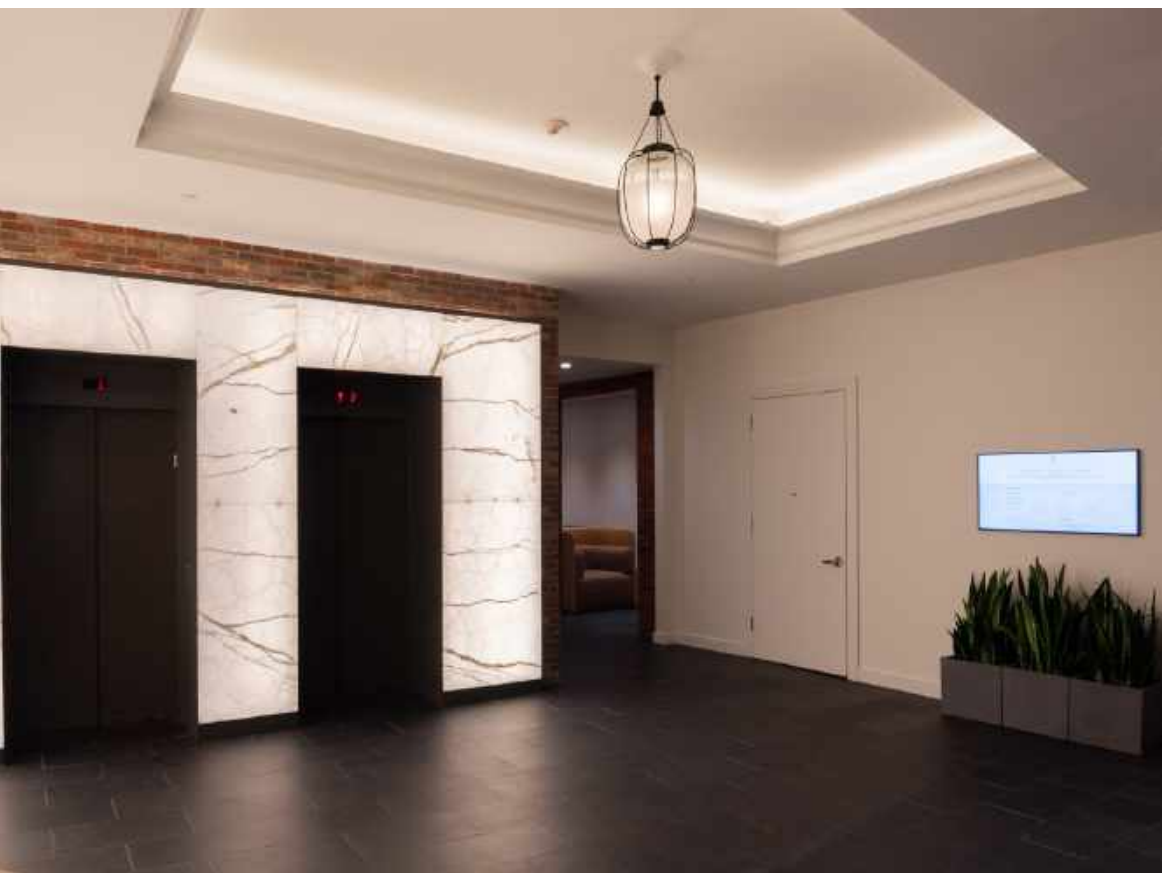
*Left: Pre-construction rendering
Right: As built*



SEARS’ CRESCENT OFFICES

The project consisted of the full reconstruction of the lobby, elevator cabs and three office floors. The lobby features a fully customized stunning Iranian white onyx wall with LED back lighting and vein-matched glass coated slabs on an imported and custom designed frame. The lobby also included thin brick for the Bostonian look and feel with imported Italian slate flooring. The elevator cabs feature DACRYL acrylic panels imported from France and the offices feature floor-to-ceiling frameless glass, wood flooring, European kitchens, fully concealed HVAC ductwork and all mechanicals, and sound attenuated office partitions with drop down gasketing.

DEVELOPER & DESIGN CONCEPT
Chevron Partners
GENERAL CONTRACTOR
Lazare Builders
PROJECT ARCHITECT
Kripper Architecture Studio
MATERIAL SOURCING
Adige Design



Lobby wall structure by Armonia Interni & Onyx by Venetian Gold, sourced exclusively through Adige Design.

BE A DIFFERENT MAKER.

FEEL THE JOY OF CREATION AND TAKE DELIGHT IN A PLOT TWIST.

FEED AN IDEA & STARVE A COMPLACENCY.

HUMBLE BEGINNINGS BAKE MAJOR CHANGE.

STRETCH YOURSELF THIN. STOP & TASTE THE CRISPY. STARTLE YOUR SENSES.

TREAT YOURSELF TO REAL FOOD TREATED RIGHT.

DEVELOP A TASTE FOR BEAUTIFUL, HIGHLY DECORATED THINGS.

SHARE WITH ENEMIES AND BREAK BREAD WITH NEW FRIENDS.

HAPPINESS TASTES BETTER TOGETHER.

LIVE LIFE TO THE BELLY-FULLEST.

WELCOME TO YOUR FARM TO PIZZA PARTY.

**FIRE YOUR STUNT DOUBLE & GRAB
YOUR SEAT AT THE TABLE.**

oath

oath

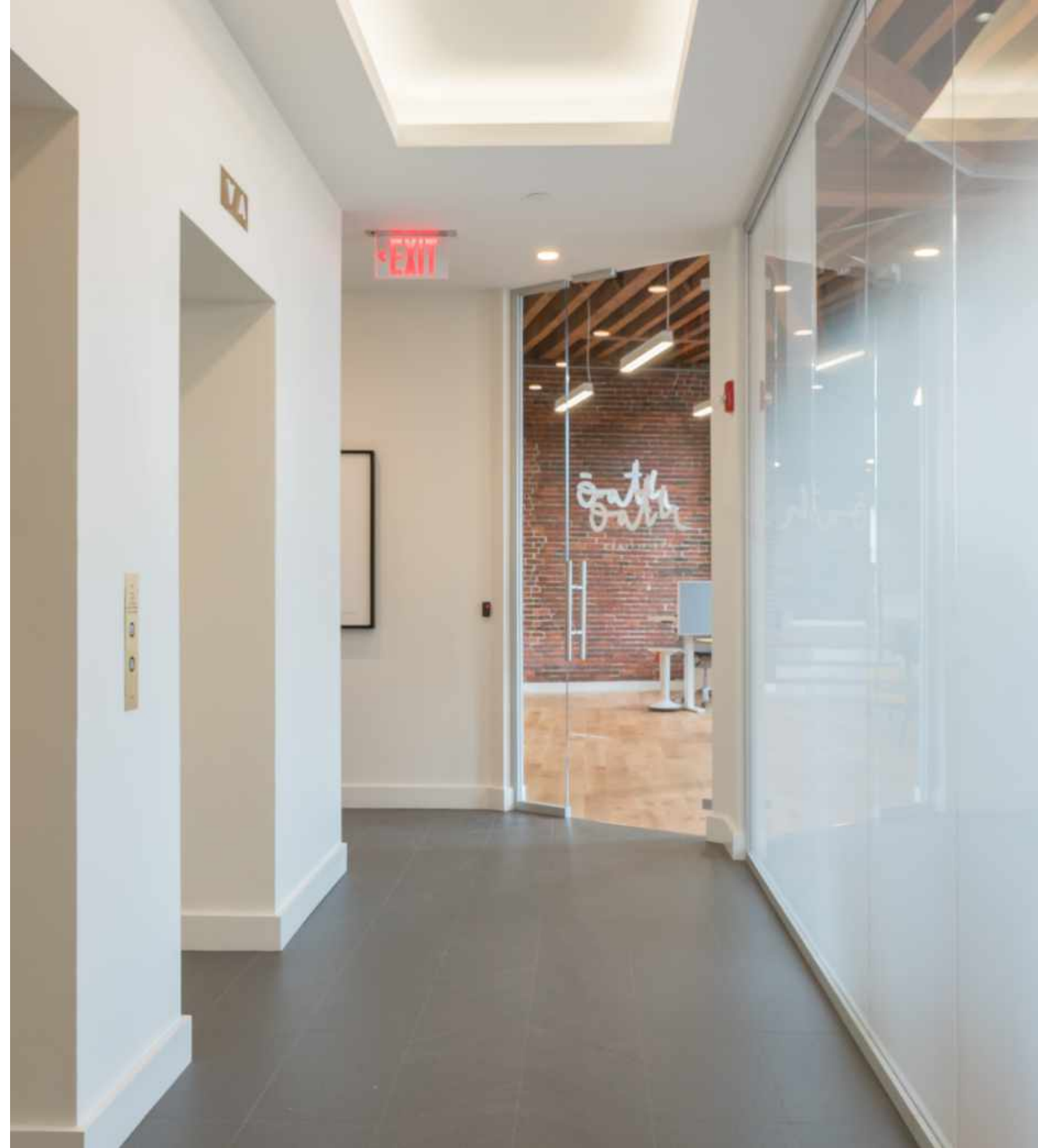
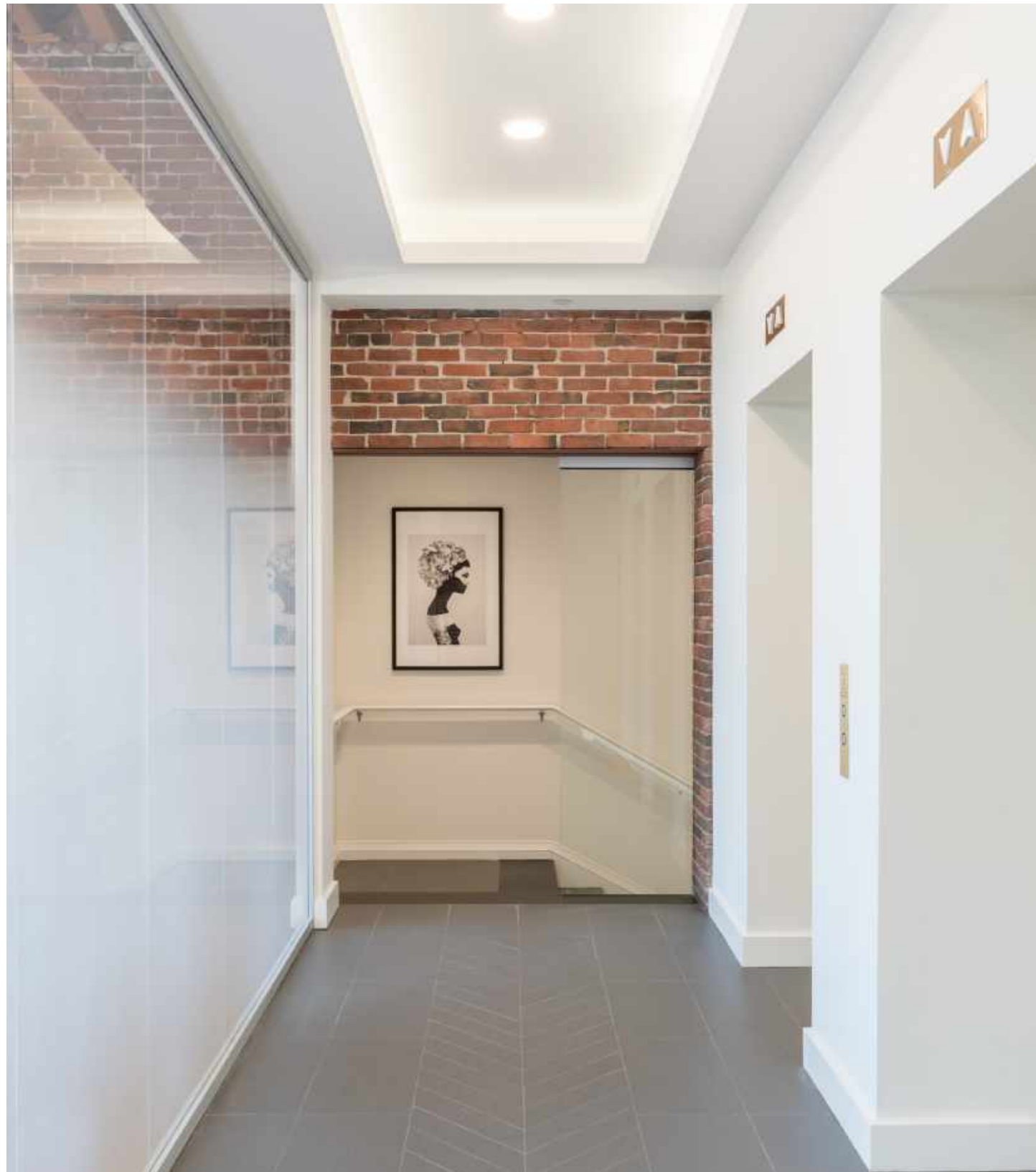








Kitchens by Astra Cucine,
exclusively sourced through Adige Design.







Glass partitions by Adige Design.







French oak flooring by Itlas Pavimenti in Legno,
exclusively sourced through Adige Design.







LAZAREBUILDERS.COM

© LAZARE BUILDERS LLC