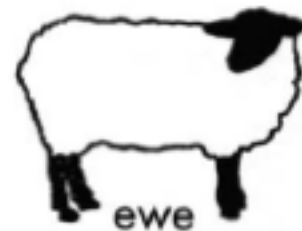
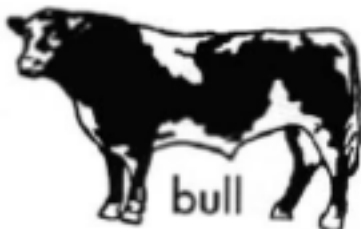
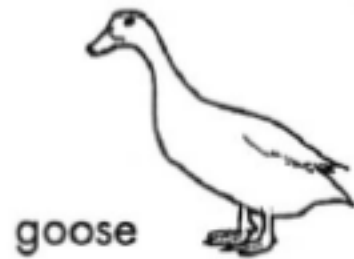
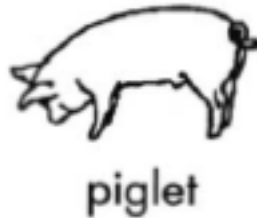
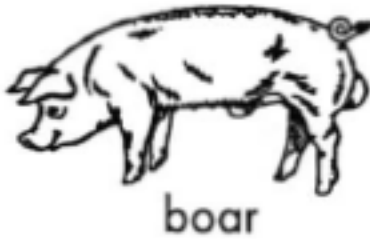
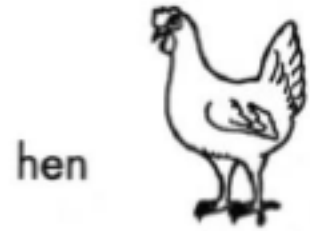
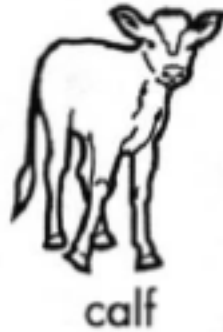
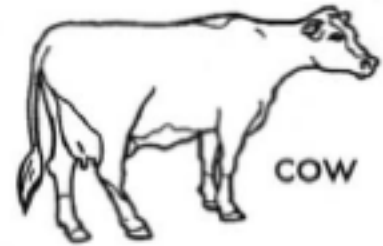


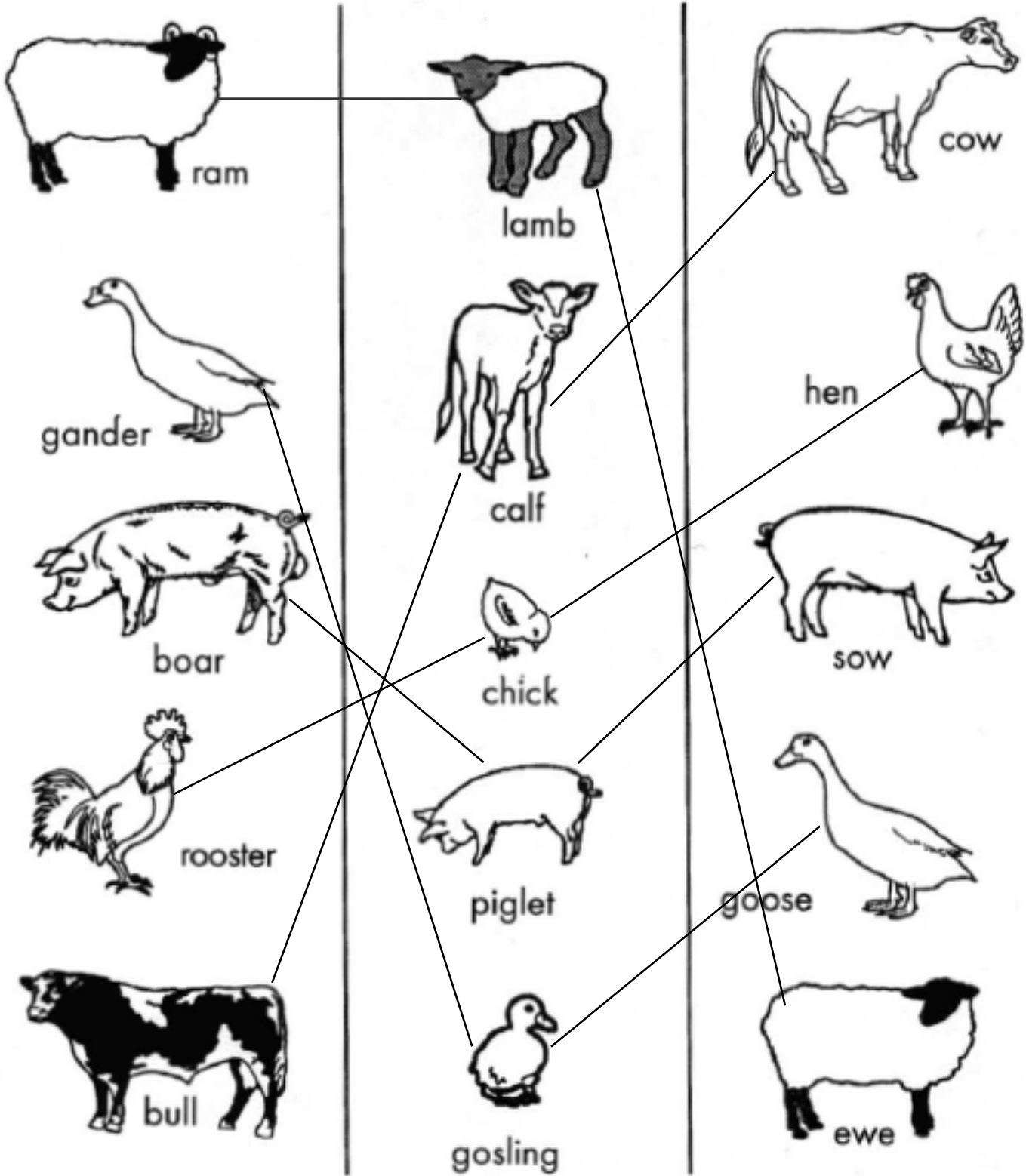
**WHO'S WHO?**

DRAW LINES TO MATCH THE FATHERS, BABIES, AND MOTHERS.



How many animals have 2 feet? \_\_\_\_\_ How many animals have 4 feet? \_\_\_\_\_

ANSWER KEY



How many animals have 2 feet? 3

How many animals have 4 feet? 2