

# FACT SHEET

## ABOUT PALAZZO PARIGI

**Opening date:** September 2013

**Location:** Milano

**Owner & Managing Director:** Paola Giambelli

**Architect:** Paola Giambelli

**Interior Designer:** Pierre-Yves Rochon

**Chef:** Stefano Pizzasegale



## THE HISTORY

Palazzo Parigi has been established on the site of the former 17th century Palazzo Cramer. The building, previously home to a prestigious Italian bank, was acquired by the noted Italian construction company Giambelli S.p.A. Meticulously designed and passionately managed by the inspirational Italian architect and owner, Paola Giambelli, Palazzo Parigi blends the style and elegance of two beloved cities, Milan and Paris. It was born out of her desire to create a place that didn't exist in Milan. A five-star luxury hotel that would give guests the opportunity to witness true Italian hospitality through an unparalleled emotional experience.

## LOCATION

Palazzo Parigi is located in the heart of Milan, in the Brera district, an area of great historic, artistic and cultural importance.

- 5-minute walk to the exclusive via Montenapoleone shopping street
- 5-minute walk to Pinacoteca di Brera
- 12-minute walk to Teatro alla Scala
- 15-minute walk to the Duomo Cathedral
- 20-minute drive to Linate Airport
- 50-minute drive to Malpensa International Airport
- By train: Turin (1hr), Florence (1hr40), Venice (2hr), Verona (1hr)



## LEISURE & CULTURAL ATTRACTIONS

- **Short walk** from Milan's major cultural attractions, such as Pinacoteca di Brera, Teatro alla Scala and its museum, Palazzo Reale, Sforzesco Castle and Leonardo Da Vinci's "The Last Supper". Palazzo Parigi is also a few steps away from the fashion district and the nearby areas of Corso Como and Corso Garibaldi, that offer the trendiest and most vibrant venues in Milan.
- **Short drive** to sought-after destinations such as Bergamo, Franciacorta, Lake Como and Lake Maggiore.



## ROOMS & SUITES

54 Rooms (35-42 m<sup>2</sup>)

33 Suites (45-60 m<sup>2</sup>)

8 Signature Suites (60-180 m<sup>2</sup>)

- Bespoke design inspired by Milanese sober elegance or Parisian refinement
- Original artworks and antiques, luxurious fabrics
- Marble bathrooms with separate tub and shower
- Private balconies or terraces, many with unmissable views of the city
- *Clarins* in-room amenities



## DINING

### Gastronomic Restaurant

- An enchanting neoclassic space facing the private secular garden. The restaurant offers an ideal journey through the flavours of traditional Italian gastronomy.
- Open every day from 12pm to 3pm and from 7:30pm to 11pm

### Private Garden

- Decorated with elegant statues and ornaments, and shaded by ancient trees, it is the perfect place to gather for a drink or a lunch.
- Open during summer months

### Bistrot Caffè Parigi

- Effortlessly elegant and very welcoming with its warm hues, it is a wonderful place for a long leisurely coffee, a light lunch, a decadent afternoon tea, or a drink with friends.
- Open every day from 7am to 1am

### Winter Garden

- This conservatory is the most iconic space of Caffè Parigi, flooded with natural light and nestled in the lush greenery of the garden.
- Open all year long



## GRAND SPA

A 1700 m<sup>2</sup> Moorish-inspired sanctuary of relaxation located on the 3rd floor of Palazzo Parigi and flooded with natural light. The perfect getaway from the fast pace of the city.

- Open every day from 8am to 9pm



12x7m swimming pool



Steam bath



Private Hammam Suite



Relaxation room



Oasis Health Bar & Restaurant



Finnish sauna



Large fitness area



Jacuzzi



Emotional Shower



Icefall



Patio and terrace



7 thematic treatment rooms



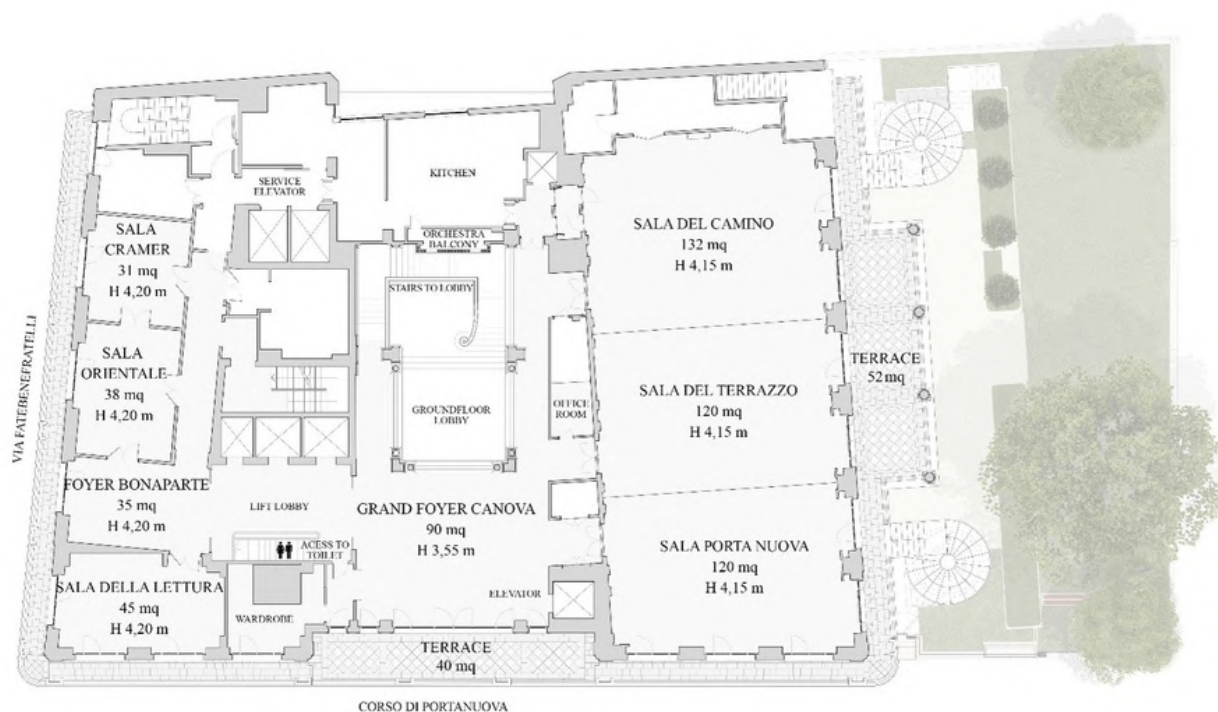
## MEETINGS & EVENTS

Palazzo Parigi offers 611 m<sup>2</sup> (6,577 sq ft) of highly versatile meeting space situated on the first floor and complemented by a 92 m<sup>2</sup> (990 sq ft) outdoor terrace.

- 6 rooms with natural light and external access to the balcony or terrace
- Magnificent 372 m<sup>2</sup> (4,004 sq ft) ballroom with access to the outdoor terrace
- Classic and elegant design
- Dedicated kitchen to serve all event catering needs
- Fully equipped Business Centre



# FIRST FLOOR PLAN



FUNCTION ROOM	SIZE	SURFACE	HEIGHT	■	■	■	■	■	■	■
Sala dei Giardini	29,00 x 12,80	372 sqm	4,15	400	100	100	200	180	350	350
Sala del Camino	10,30 x 12,80	132 sqm	4,15	120	40	40	60	50	100	120
Sala del Terrazzo	9,40 x 12,80	120 sqm	4,15	110	35	35	55	40	90	100
Sala Porta Nuova	9,30 x 12,80	120 sqm	4,15	110	35	35	55	40	90	100
Sala Belvedere (Camino + Terrazzo)	19,70 x 12,80	252 sqm	4,15	250	70	70	120	120	200	250
Sala Grand Lumiere (Terrazzo + Porta Nuova)	18,70 x 12,80	240 sqm	4,15	230	60	60	100	100	180	230
Sala della Lettura	8,90 x 5,10	45 sqm	4,20	40	24	24	24	18	30	35
Sala Orientale	5,20 x 5,75	38 sqm	4,20	20	15	16	15	18	24	30
Sala Cramer	5,20 x 5,75	31 sqm	4,20	12	10	10	-	8	10	20
Grand Foyer Canova	10,50 x 8,50	90 sqm	3,55	-	-	-	-	-	-	120
Foyer Bonaparte	7,50 x 4,70	35 sqm	4,20	-	-	-	-	-	-	30
Terrazzo esterno		92 sqm		-	-	-	-	-	-	30



# PALAZZO PARIGI

MILANO  
HOTEL & GRAND SPA

## CONTACTS

Corso di Porta Nuova, 1 – 20121 Milano, Italia

[www.palazzoparigi.com](http://www.palazzoparigi.com)

Tel.: +39 02 625625

E-mail: [info@palazzoparigi.com](mailto:info@palazzoparigi.com)



EST. 1928  
THE LEADING HOTELS  
OF THE WORLD®