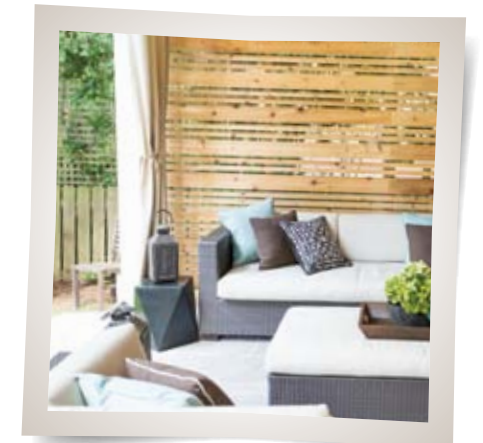
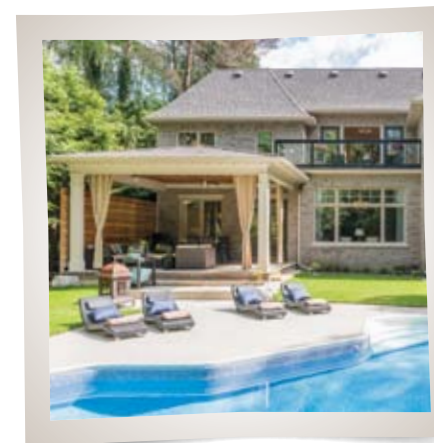
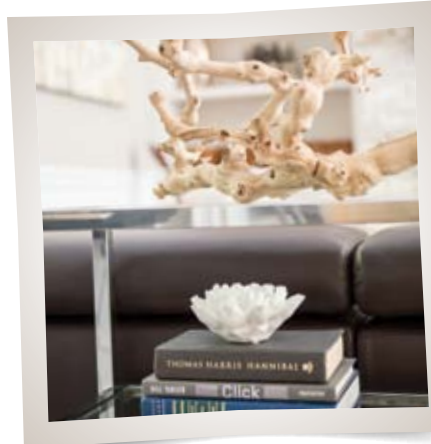
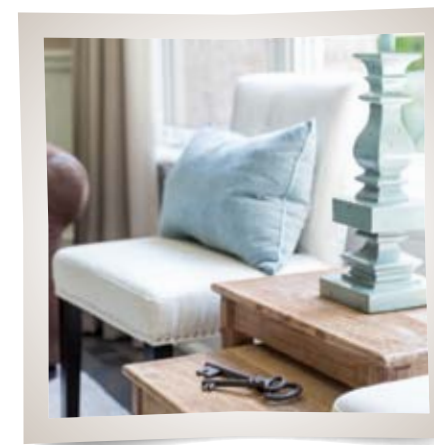
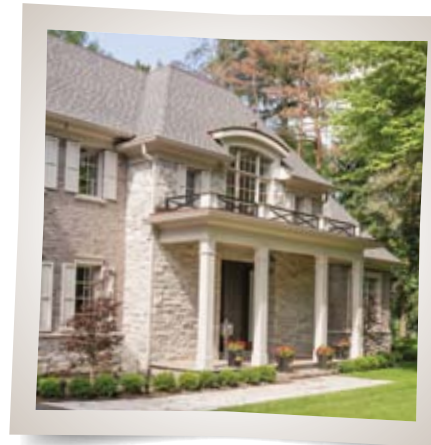


AT HOME WITH *design*

BY JOYCE TURNER GIONET
PHOTOGRAPHY BY JASON HARTOG

What changes when a designer designs her own home in contrast to designing for her clients?

Tina's home didn't break the bank, but she has a knack for locating texture and pattern that work together harmoniously.



"I'm no different than my clients," says **Tina Singh**, owner of **Lionsgate Design**. "Most of us don't have the luxury of unlimited budgets, so it's about priorities. Saving in one area allows you to splurge in another." Tina and husband Kulbir set a budget with a 10 per cent cushion for unexpected expenses, like the hefty \$40,000 security deposit the city required just in case trees were damaged during the build. With mega flair and a personality that reflects its stylish owners, the home was completed on time and on budget. "Even the weather cooperated," laughs Tina.

Just like any client, she had to choose where to scale back and where to splurge. To scale back, Jeld-Wen of Canada Ltd. vinyl windows were chosen over wood. Jeld-Wen's luxury vinyl windows are architecturally

appealing, energy efficient and low maintenance. For a couple with two children and busy professional lives, Tina and Kulbir are all for low-maintenance luxury. In the kitchen they opted for painted MDF instead of wood cabinetry. To deliver the wow factor, Tina added Swarovski crystal handles and pulls by Topex Hardware. On the splurge side? The African mahogany and glass railing that skirts the master bedroom terrace was an extravagance. Kulbir wanted a place to barbecue in all weather. He got his wish in the 20-by-20 foot covered stone porch with gas fireplace and custom Japanese-style privacy fence. It's a zen-like space that in a stroke of whimsy, Tina designed with an aluminum roof to emphasize the soothing sound of the rain. *Continued on page 32*



The couple planned for 3,000 sq. ft.; aesthetically, the lot dictated a larger house, so it's closer to 5,000. Hard as it is to believe, Tina whipped up preliminary plans in one day. She chuckles, "we knew what we wanted so the design just flowed." Fresh, bright, spacious with spa ambience were the parameters.

David Small of **David Small Designs** drew up the architectural plans. **Ron Bawks** of **Legend Homes** was chosen as builder. His crew worked with Tina up to the framing, at which point her tradespeople took over. To name a few, **R.C.C.** for the tile work, **Electricity Group** wired the home and **JIL General Contracting** painted the interior and exterior.

The couple wanted a Georgian-style exterior; Tina loves its symmetry and balance. As one drives up to the house, first impressions are of a timeless exterior, owned by muntin windows and stately columns. Brick and stone trumped stucco, another low-maintenance pick. Palmetto Ashland grey brick caps buff, brown and grey Eramosa limestone, laid by

Magnum Masonry. The faux upper balcony and address scripting over the front door suggest Tina has a classically romantic side.

The original house had a tiny entrance hall. Saying goodbye was a procession with guests lined up to get out the door. In the new build, a grand foyer features a white marble floor with exotic grey mother of pearl-style inlay. It offers plenty of space for hellos and goodbyes. A grey stained oak staircase with painted risers and baluster leads to the upstairs bedrooms.

Opening onto the foyer, the dining and living rooms share space. Tina calls the style modern rustic. The focal wall is covered in flocked charcoal wallpaper splashed with a modern take on a traditional paisley pattern. It's a dramatic starting canvas. The grey wood dining table with wide turned legs is paired with sliver and black 'modified paisley' patterned chairs. Throw cushions, pillows, filmy one-off lampshades offer a delightfully measured dose of art deco bling. Nothing is ever overdone with Tina.

In the great room, she created zones – intimate gathering spots – one for

TV another for conversation, balanced by the kitchen and breakfast area. Built-ins were designed by Tina and built by **Prestige Custom Homes**. Contemporary chrome and gold-colour light fixtures are from **LiteMode**. Oak flooring, in a medium grey, ensures continuity across the space.

Cameo Kitchens and Fine Cabinetry installed the kitchen. "Dom and Nicole were easy to work with and really listened to what we wanted," says Tina. What they wanted was an easy-living monochromatic work/entertainment zone with clean lines. Dual seven-by-seven foot Caesarstone slabs comprise the oversize island. Turned walnut legs give it a furniture feel and leather stools offer guests a place to relax while dinner is prepared. Cior's Cipollino Poli light-catching backsplash tile adds visual depth. The 10-foot ceiling and light-painted cabinetry keep the space bright and open. Elements like top-lit cabinets showcasing the blue-grey tone from the backsplash keep it interesting. Prep areas and storage are expertly planned, right down to space-saving pocket doors on the servery. *Continued on page 34*

ABOVE FAR LEFT: The kitchen island is huge, allowing for lots of prep space. The kitchen utilizes simple white cabinetry, and Tina adds the sparkle with crystal hardware and top-of-the-line appliances. **TOP LEFT:** The family room is an open concept area that is made conversational by the sectional sofa. **TOP RIGHT:** The servery has a wine fridge and glass-panelled cabinetry to show off glassware. **ABOVE LEFT:** An intimate nook attached to the kitchen and family room is an extra space that is perfect for tea while gazing into the beautiful yard. **ABOVE RIGHT:** The desk in the office replicates an airplane wing. It's an industrial element that balances out the softer side of the home.



ABOVE: The master bedroom is a true retreat. The raised tray ceiling adds dimension, and the room opens to an upper level patio that is great for stargazing.
FAR LEFT: The master en suite offers a large freestanding soaker tub that lends itself to bubble baths and total relaxation.
LEFT: The walk-in closet has a spot for everything including built-in shoe trees.

In the master, the 11-foot coffered ceiling is painted Benjamin Moore's Willow, emulating a night sky. In lieu of bedside lamps, mini chandeliers hang over mirrored silver-leaf side tables. Soft berber carpeting, a gas fireplace and cosy armchairs make it a private parental getaway. Contemporary french doors open onto a classic terrace, a serene spot that looks over the forest.

In the en suite, zen rules. White, white and more white, delivering elegant spa simplicity. The freestanding soaker tub, from Maxx Bath Inc., sits on white marble from Ciot. The four-by-six foot white tile rug is a repetition of simple circles. Squared-off stainless hardware is from Taps. The walk-in glass shower features Ciot's dark polished Escarpment

marble. Swarovski finials on the linen curtains are the only concession to drama. This is a room with one aim in mind – total relaxation.

The final touch, one even this talented designer couldn't have planned, is the family of deer that regularly leap the ravine fence and wander up to the patio doors, much to the children's delight. Rabbits streak cheekily across the lawns. Bird song is a constant morning accompaniment. As Tina's mother commented during a visit, it's like waking up in wonderland. The design is also a wonderland – a tasteful, relaxing (with touches of trendy) tribute to family life with a luxury point of view. And although not built with this in mind, it's a stunning portfolio showcasing a designer completely at home in the world of great design. **OH**

Marketplace

To order a listing in marketplace, please contact Maureen Grice at 1.888.314.0777 x109 • maureen@ourhomesmagazine.com

Canada's Most Trusted Team of Locksmiths
serving the Mississauga, Ontario area

- Friendly, Professional Service
- Marked Vehicles
- Uniformed Employees
- Car Door Unlocking
- Full Service Locksmith
- Professionally Trained Technicians
- Quoted Price is What You Pay
- Fastest Response Times

POP-A-LOCK of Mississauga
905-891-9888
www.popalockmississauga.ca

INSURED • GUARANTEED • 24/7 • OVER 20 YEARS EXPERIENCE • LOCALLY OWNED & OPERATED

SECURITY SYSTEM MONITORING FROM \$15/MONTH – NO CONTRACT

- Security Systems
- Surround Sounds
- Central Vacuum Systems
- Video Surveillance Cameras
- Access Control
- Theatre Rooms
- Phone/Cable/Home Networking
- Plasma TV's



MAVIS SECURITY & Home Automation **905.277.4664**
www.mavissecurity.ca

Advertise in our Winter Issue & get noticed!

Give YOUR BUSINESS the benefit of premium exposure to our extensive targeted readership!

ADVERTISING INQUIRIES & SALES, PLEASE CONTACT:

Maureen Grice • 1.888.314.0777 x109
maureen@ourhomesmagazine.com

ourhomes
THE CITY OF MISSISSAUGA

HEARTH MANOR FIREPLACES

Gas~Wood~Electric

2575 Dundas Street West
Mississauga Home and Design Centre
905-828-8880
www.hearthmanorfireplaces.com

Walser

Furniture Refinishing & Antique Restoration

Walser Furniture Refinishing and Antique Restoration specializes in high quality repair, restoration and refinishing of antique and contemporary wood furniture since 1956.

1089 Seneca Avenue, Mississauga, Ontario
905-278-8129 | walserrefinishing.com

Jason Hartog photography

Product
Commercial
Architectural
Interiors
Retouching
Digital Composition

647-269-0466 www.jasonhartog.com

INDIAN CUISINE BY THE LAKE



DINE IN • TAKE OUT • DELIVERY • CATERING

56A Lakeshore Rd E, Port Credit
905 891 3333
www.indiancuisinebythelake.com