



CAPITAL
REALTY GROUP
AT FATHOM REALTY

INTRODUCING

**1000 E. HWY 350
BIG SPRING, TX 79720**

PAIGE JORDAN, REAL ESTATE AGENT

432-557-4735

PAIGE@CAPITALREALTYTX.COM

CAPITALREALTYTX.COM



COMMERCIAL PROPERTY

.86 ACRES | 1,408 SQFT

Well-maintained commercial property offers excellent accessibility and visibility just minutes from Interstate 20. The property is fully fenced and features a caliche pad, providing a durable surface ideal for equipment, vehicle storage, or industrial use. Improvements include a clean office space with a restroom, along with an on-site water well. This location is well-suited for a variety of commercial or industrial operations seeking a secure, functional site in a high-traffic area.

KEY FEATURES

- Fully Fenced Property
- 3 Garage Doors
- Office Space w/ Restroom
- High-Traffic Area





CAPITAL REALTY GROUP AT FATHOM REALTY



CAPITAL REALTY GROUP AT FATHOM REALTY

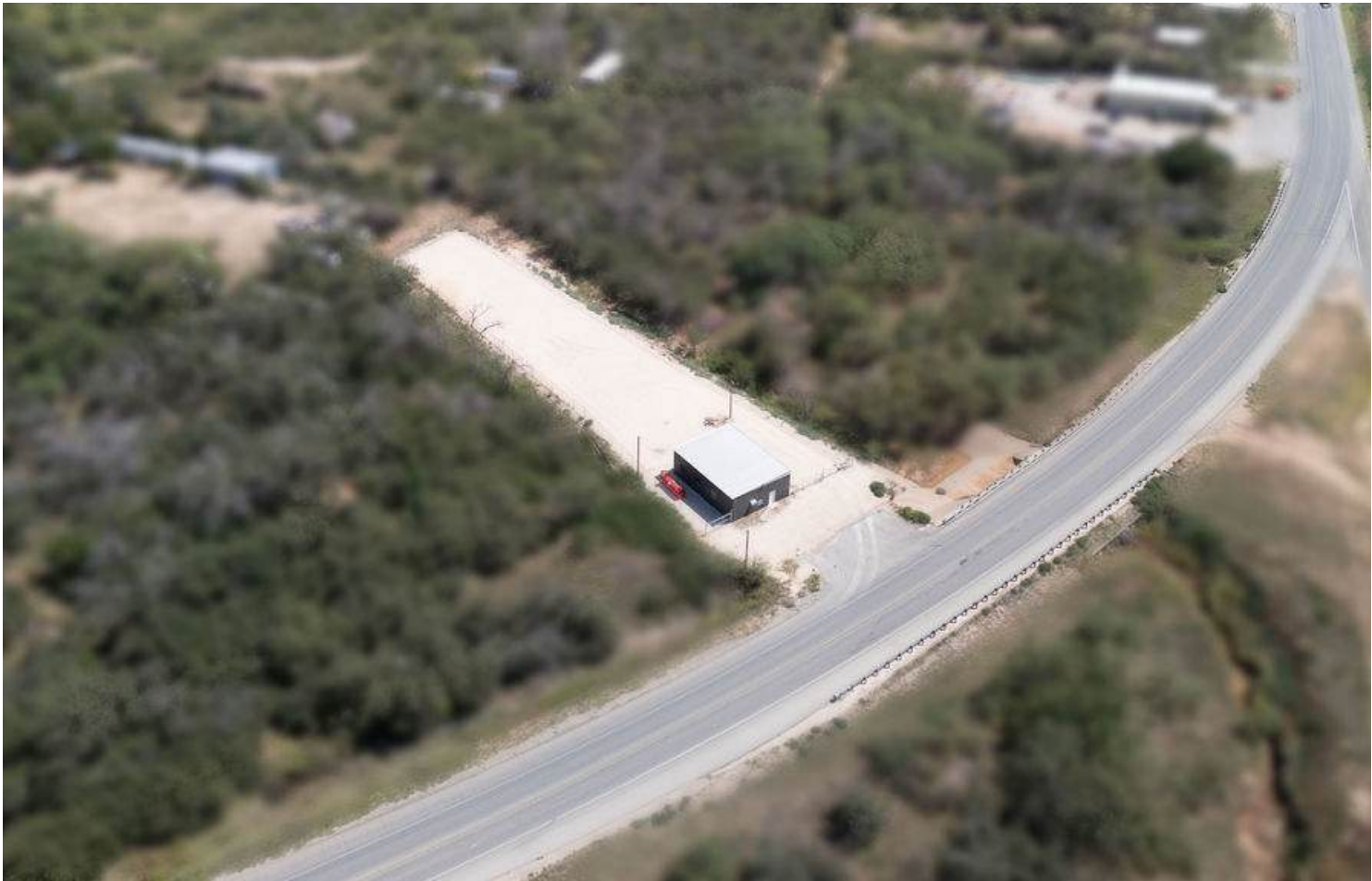


CAPITAL REALTY GROUP AT FATHOM REALTY





CAPITAL REALTY GROUP AT FATHOM REALTY



CAPITAL REALTY GROUP AT FATHOM REALTY