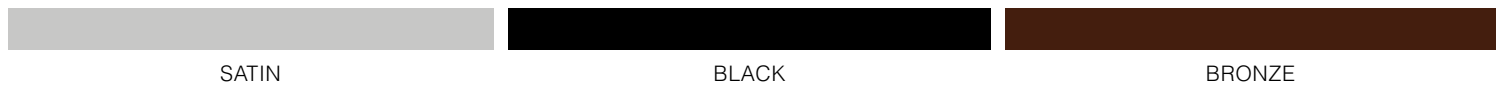
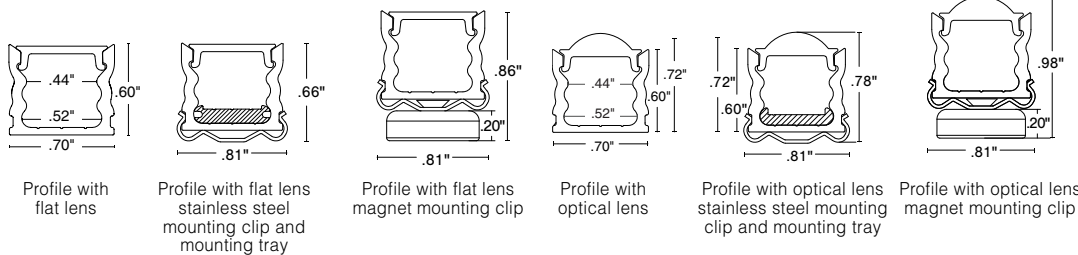


Our most popular LED extrusion, the TORQ, is ideal for surface mounted or recessed installations. Pair the TORQ with an optional mounting tray for a 60-degree or 70-degree beam angle. The TORQ is available in satin, black, and bronze finishes, with clear, frosted, polar, diffused, and optical lens options, or the TORQ can be encapsulated in clear or translucent. Combine TORQ with WhiteOptics to increase light output between 5-52%.

### Finish

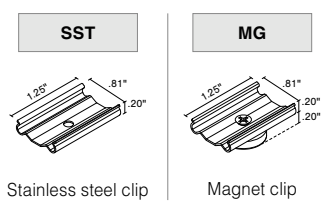


### Dimensions

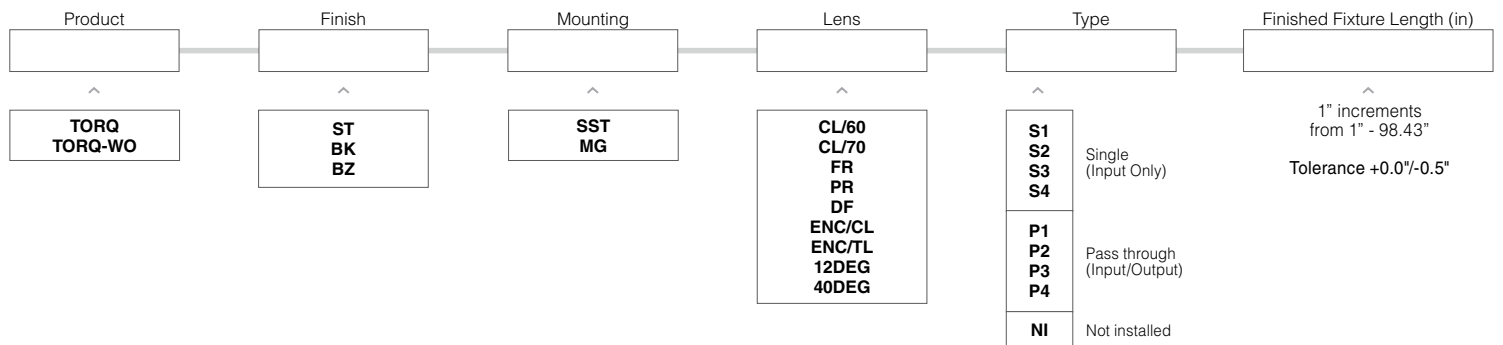


### Mounting

2 clips provided for 4' or less; 4 clips provided for greater than 4'



### Part Number Builder



- If selecting WhiteOptics option, select **TORQ-WO** for Product

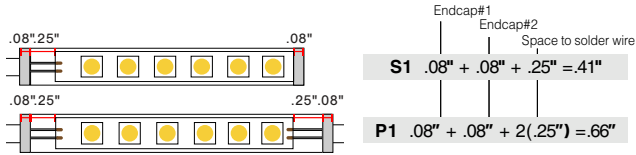
- Field modifications must comply with Q-Tran's installation methods otherwise warranty is null & void
- UL Listed when assembled with STRIP LEDs at Q-Tran
- Suitable for installation in the storage area of a clothes closet when assembled as a fixture at Q-Tran facility (Not applicable for encapsulation or LED strips exceeding 4W/ft)
- Surface mount
- Two different cut off angles: CL/60 and CL/70
- Two encapsulation options: clear and translucent
- IK10 rated when encapsulation is chosen

## Compatible Strips

	STATIC WHITE (SW)	STATIC WHITE INDIVIDUALLY ADDRESSABLE (SW-IA)	STATIC WHITE STOCKING DISTRIBUTOR (SD-SW)	STATIC WHITE HIGH EFFICACY (SW-HE)	STATIC WHITE HIGH EFFICACY PLUS (SW-HE+)	DYNAMIC WHITE (DW)	DYNAMIC WHITE HIGH EFFICACY (DW-HE)	STATIC COLOR (SC)	WARM DIM (WD)	RGB	RGBW	RGBW HIGH EFFICACY (RGBW-HE)*
	1.5W/ft 3.0W/ft 4.0W/ft 5.0W/ft 6.0W/ft	5.0W/ft	2.0W/ft 4.0W/ft 6.0W/ft	1.5W/ft 3.0W/ft 6.0W/ft 9.0W/ft	3.0W/ft 6.0W/ft	6.0W/ft	3.0W/ft 5.0W/ft 8.0W/ft	5.0W/ft	6.0W/ft	6.0W/ft	6.0W/ft	4.0W/ft 8.0W/ft
DRY	✓	✓	✓	✓	✓	✓	✓	✓	✓	✓		✓
DMP	✓			✓		✓	✓	✓		✓		✓
ENC	✓			✓		✓	✓	✓		✓		✓
WET	✓		✓					✓				

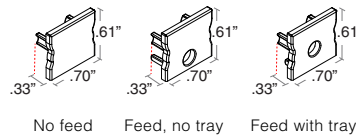
\*Not recommended for use with optical lenses

## Length (in) Add to nominal LED length for fixture length

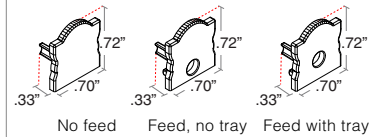


## End Caps

### Flat end caps



### Optical end caps



## Lens with LED visibility

CL	FR	PR	DF	ENC/CL	ENC/TL	12DEG & 40DEG
Clear	Frosted	Polar	Diffused	Encapsulated in Clear	Encapsulated in translucent	Optical

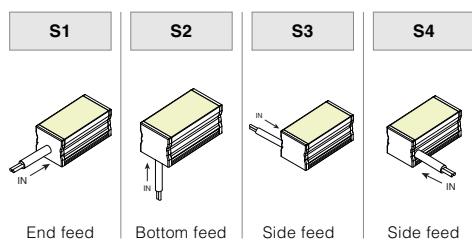
## WhiteOptics Photometrics [Calculated L70(6k) - 70000 hours]

Tested with SW24/5.0-DRY-30

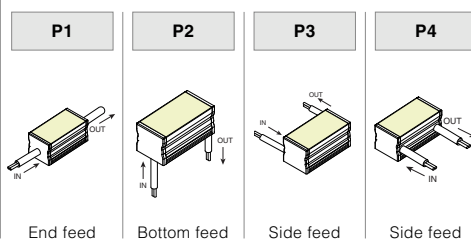
	TORQ LM/FT		TORQ-WO LM/FT		TORQ-WO Lumen Increase	
	Satin	Black/Bronze	Satin	Black/Bronze	Satin	Black/Bronze
Clear	346	277	365	350	5%	26%
Frosted	298	235	326	315	9%	34%
Polar	281	208	312	291	11%	40%
Diffused	245	168	270	256	10%	52%

## Type

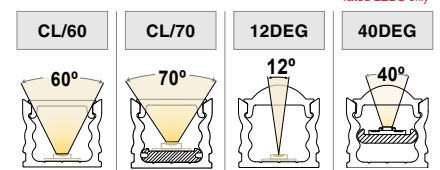
### SINGLE (Input only)



### PASS THROUGH (Input/Output)



## Cut Off



DRY and DMP rated LEDs only