

ēvolvērē

PSYCHOTHERAPY
CLINICAL PSYCHOLOGY
EDUCATIONAL PSYCHOLOGY

Client Services & Rates

2025

EVOLVEREPSYCHOLOGY.COM



@EVOLVEREPSYCHOLOGY

“

Observe the stars
in their courses
as though running
together with them,
always reflecting on
the transformations
of the elements.

-Marius Aurelius

Welcome to Ëvolvērē Psychology, where psychological services are tailored to individuals seeking to evolve — academically, professionally, and personally.

Within Ëvolvērē, I provide psychological assessment, evaluation, diagnosis, and psychotherapy — informed by neuroscience and performance science, and enriched by a positive psychology approach.

Dually trained and licensed in both Clinical and Educational Psychology, I leverage advanced expertise in the neuropsychology of behavior and learning to support young adolescents, adolescents, and adults in navigating challenges related to adjustment disorders, anxiety disorders, depressive disorders, neurodevelopmental disorders, and personality disorders, as well as complex trauma.

I also support individuals traversing the landscape of adoption, attachment difficulties, and relational patterns shaped by emotional dysregulation.

I offer therapy for the thinking person. Intellectual rigor. Emotional nuance. Depth. My approach is deliberate and respectful of your individuality. The therapeutic journey, at its most transformative, is not separate from your lifestyle, but rather an integral part of it: a protected time, a serene space, and a supportive experience that nurtures psychological advancement.

Break free from overwork and overwhelm. Make space for what endures — belonging, purpose, meaning, wisdom, and the beauty of becoming.

Dr. Meagan Guenther

Services & Fees

Initial Diagnostic Consultation <i>90 minute session</i>	\$450
Psychological Counseling / Psychotherapy <i>60 minute session</i>	\$225
Psychological Counseling / Psychotherapy <i>45 minute session</i>	\$200
Psychological Counseling / Psychotherapy <i>30 minute session</i>	\$175
Family Psychological Counseling <i>with or without primary patient present • 50 minute session</i>	\$225
Brief Behavioral, Emotional, or Social Assessment <i>with documentation, per standardized instrument</i>	\$600
Standardized Cognitive Performance Testing <i>with report, per standardized instrument</i>	\$1000
Psychological Evaluation, Neuropsychological Evaluation, or Psychoeducational Evaluation	\$6,000–\$8,500
Psychoeducational Support Services <i>60 minute session</i>	\$225
Behavioral Health Consultation <i>60 minute session</i>	\$225

OVERVIEW

If you are unsure which form of evaluation is needed, a preliminary evaluation of symptoms can be conducted within a 20-60 minute appointment to inform your decision.

Feedback appointments are 30 minutes.

NEUROPSYCHOLOGICAL EVALUATION

\$8,500

Neuropsychological testing

- Interpretation of testing results and clinical data; Written report
- Clinical decision making and treatment planning
- Interactive feedback to the patient and/or caregiver(s)

PSYCHOLOGICAL EVALUATION

\$7,250

Psychological testing

- Interpretation of testing results and clinical data; Written report
- Clinical decision making and treatment planning
- Interactive feedback to the patient and/or caregiver(s)

PSYCHOEDUCATIONAL EVALUATION / INDEPENDENT EDUCATIONAL EVALUATION

\$6,000

Psychoeducational testing

- Interpretation of testing results; Written report
- Diagnostic decision making and treatment recommendations
- Up to two hours of attendance at an IEP Meeting (or equivalent)

Maximum \$8,500

Skills Groups



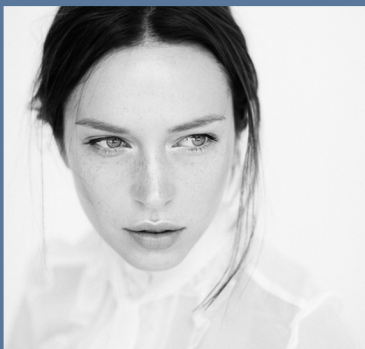
Executive Functions

Group treatment that teaches organization and time management for success in your education and your career



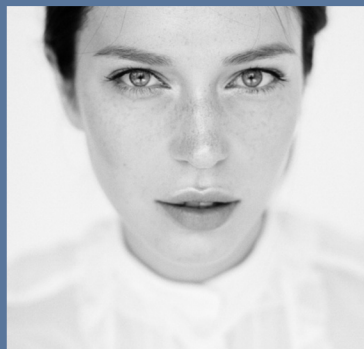
Social Skills

Group treatment designed to help individuals with social communication and social skills difficulties



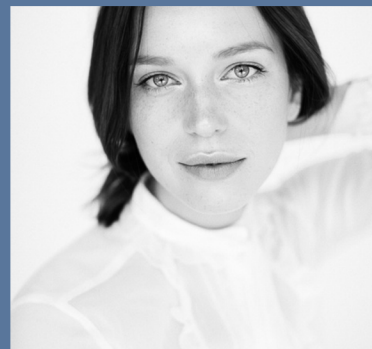
Anxiety

Group treatment that teaches coping skills to manage anxiety



Depression & Mood Regulation

Group treatment designed to help individuals who struggle with depression, anxiety, and mood swings



Mindfulness

Group treatment that teaches mindfulness practices for those seeking a renewed relationship with their thoughts and a refreshing sense of calm

Young Adolescent Groups: Ages 10–12 | Adolescent Groups: Ages 13–17
Young Adult Groups: Ages 18–24 | Adult Groups: Ages 25+



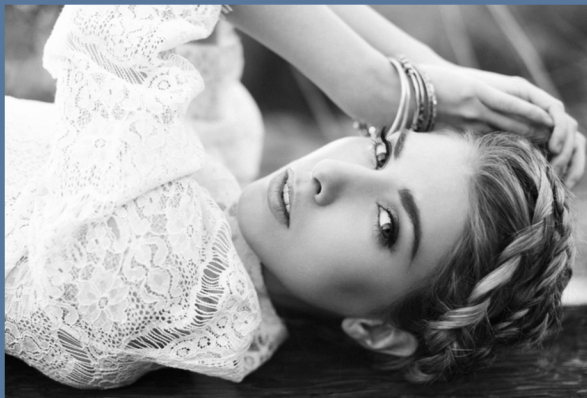
College Success

Support for students who are entering or enrolled in college and need help managing new organizational, emotional, and social challenges



Design Thinking

Collaborative guided process to help individuals develop innovation and problem solving through the framework of design thinking; fosters creativity and iterative thinking



Life Navigation

Collaborative guided process for learning and practicing psychological tools for a positive approach to living life, including navigating life domains, relationships, events, goals, values, strengths, and weaknesses



Radically Open Dialectical Behavior Therapy

Group treatment to help individuals who cope with their emotions through excessive control (perfectionism, rigid rules) increase their flexibility and social connectedness

Skills groups are offered based on group availability. A minimum of 4 participants per group is required. Skills groups meet at a rate of one session per week. For some skills groups, program participants must also be seen in individual therapy, within Ëvolveṛē Psychology or by another licensed provider.

Miscellaneous Fees

Additional Calls \$50 – \$150
Coaching or Consultation

- 1-10 Minutes: \$50
- 11-20 Minutes: \$100
- 21-30 Minutes: \$150

Letters & Summaries \$100 – \$200

- Brief Letter: \$100
- Comprehensive Summary: \$200

Outside Meetings \$300
+ *plus travel*

- Attendance at a meeting taking place outside the offices of Ëvolvere Psychology, such as at a residential treatment center, hospital, workplace, or school: \$300/hour + travel

Court Appearance / Fact Witness Testimony \$350 – \$500
+ *plus travel*

- File Review, Planning, and Preparation: \$350/hour
- Deposition Testimony: \$425/hour + travel
- Trial Testimony: \$500/hour + travel



Lateness

Please note that your appointment is reserved time. If you arrive late, your session time will not be extended.

Cancelled Appointments

There is a 48-hour cancellation policy for all appointments with Ëvolve Psychology. Canceling within 48-hours will result in a charge of 100% of the session fee to the credit card on file.

Missed Appointments

No-shows: If you do not attend a telephone, telehealth, or in-person appointment without notifying the specific person with whom you have an appointment – either via secure messaging within the patient portal or by changing the appointment using the online scheduling tool within the patient portal – you will be charged 100% of the session fee to the card on file.

ēvolvēre

Thank you for choosing Evolvere Psychology to participate in your healthcare. We welcome you to our practice and look forward to being your partner in your journey toward health, wellness, and wellbeing!

SCHEDULE A
COMPLIMENTARY CONSULTATION